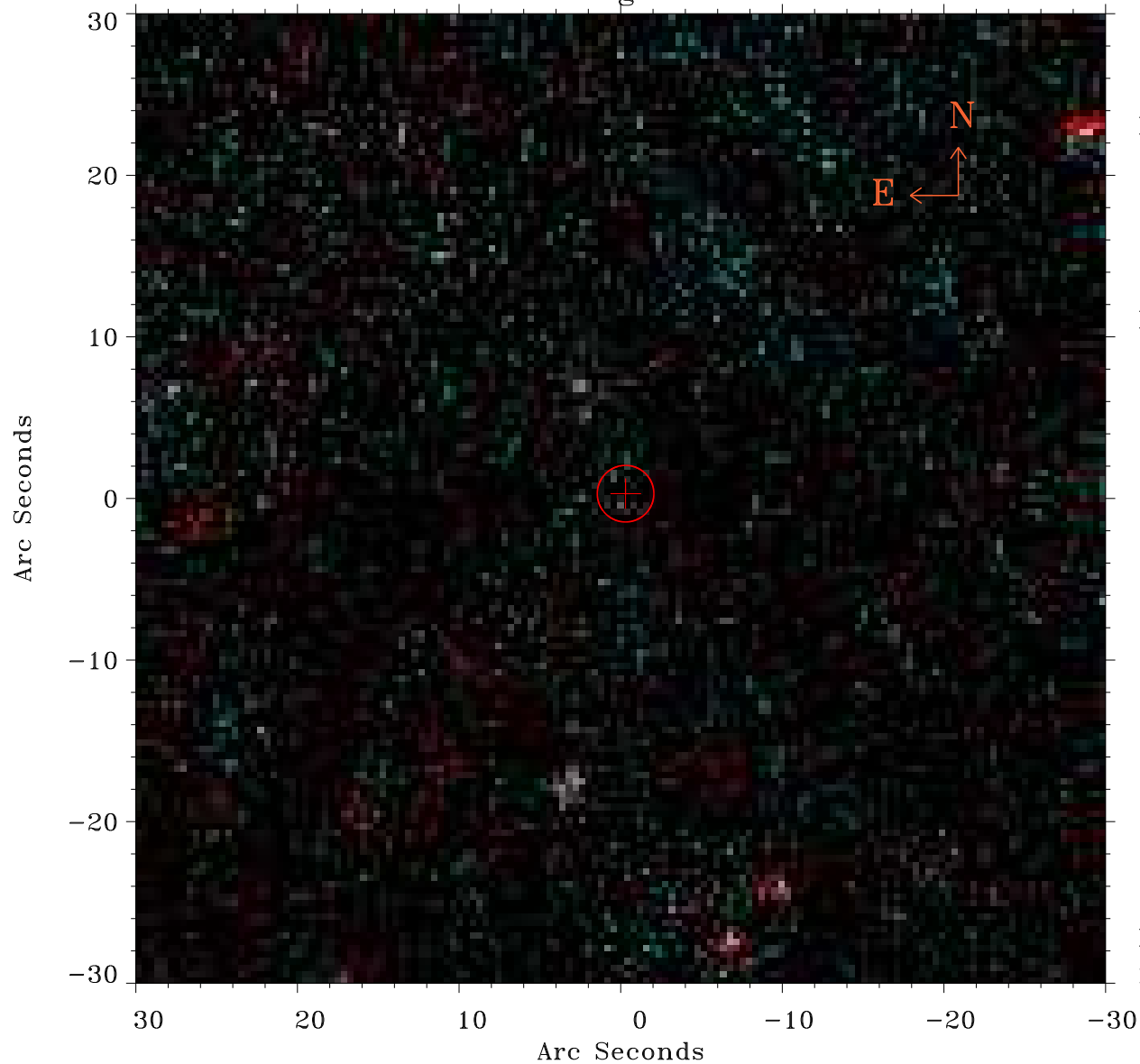


# EPIC source finding chart ACDS V10.0



Principal Investigator :

Prof Guido Risaliti

XMM target name :

SDSS 142656.18+6025

OBS ID : 803950301

Source number : 30

X-ray coordinates :

$\alpha$  : 14 28 19.09

$\delta$  : +60 26 47.5

Center coordinates :

$\alpha$  : 14 28 19.08

$\delta$  : +60 26 47.6

Plate reference :

Origin : PanSTARRS-DR1

Color coding :

z band ●

(z+g)/2 ●

g band ●

Error:

R90 : 1.7 arsec

XMM SSC

Dec 17 23:26:02 2024