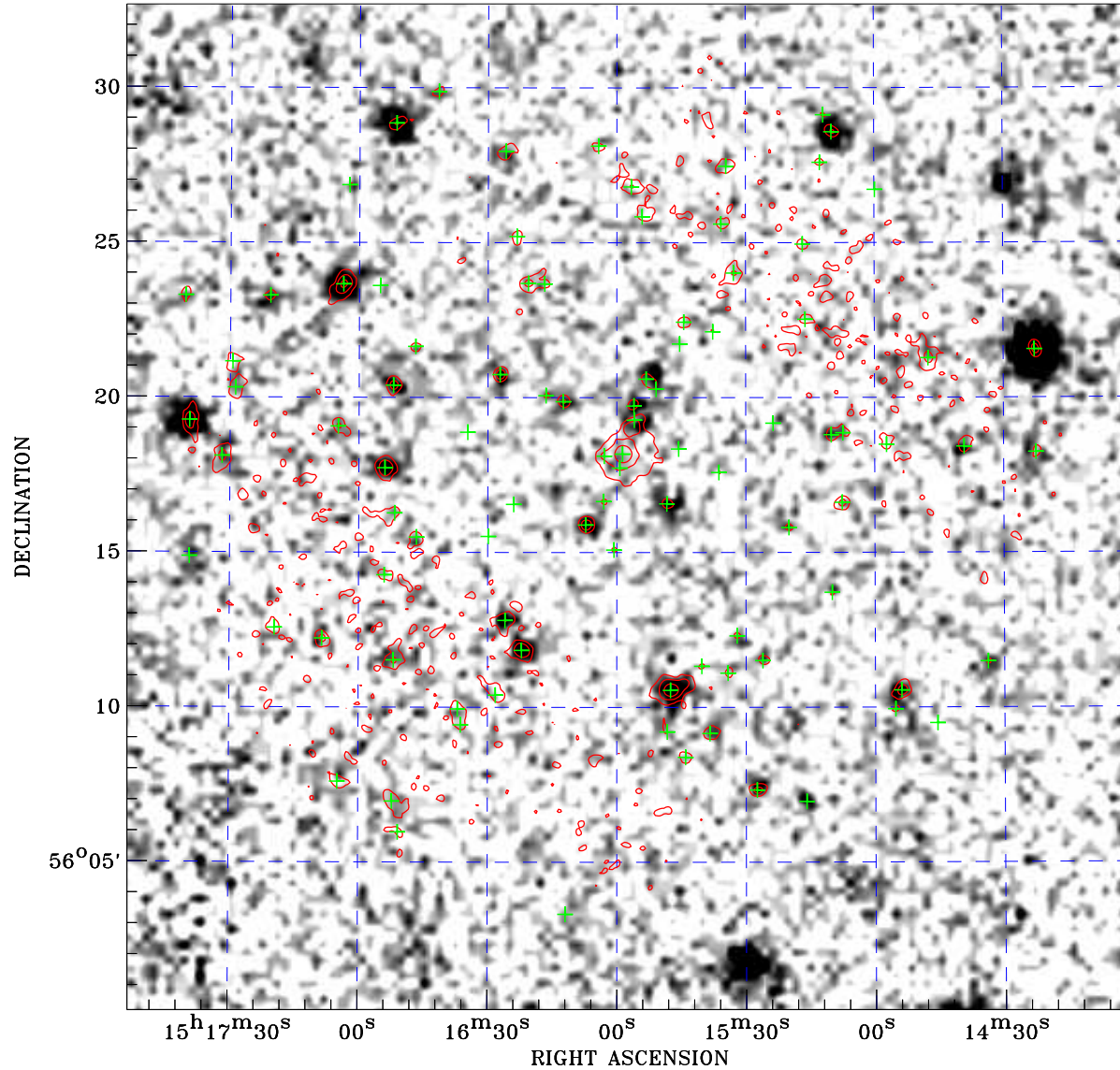


# PDF XMM ROSAT image ACDS V10.0



Principal Investigator :  
Dr andrea belfiore

XMM target name :  
NGC 5907 ULX-1

Observation ID :  
0804090301

Epic image :  
 $\alpha$  : 15 15 56.96  
 $\delta$  : +56 16 28.8  
Energy band : 0.2-12.0 keV  
MOS1 : 31648 s  
MOS2 : 32775 s  
PN : 19958 s

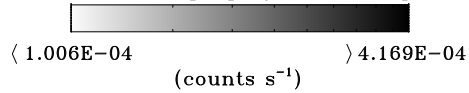
Contour levels (counts) :  
 $2\sigma$  :2.465E+00  $7\sigma$  :5.567E+00  
 $30\sigma$  :1.984E+01

Nearest ROSAT image  
from Epic image center :  
Observation : 600190p  
Instrument : PSPCB  
 $\alpha$  : 15 16 16.84  
 $\delta$  : +56 16 11.6

Other ROSAT images :  
None

XMM SSC  
Apr 19 14:18:21 2019

ROSAT image gray scale (Log) :



⊙ Epic image contour  
levels at 2, 7 and 30 $\sigma$

+ Detected Epic sources