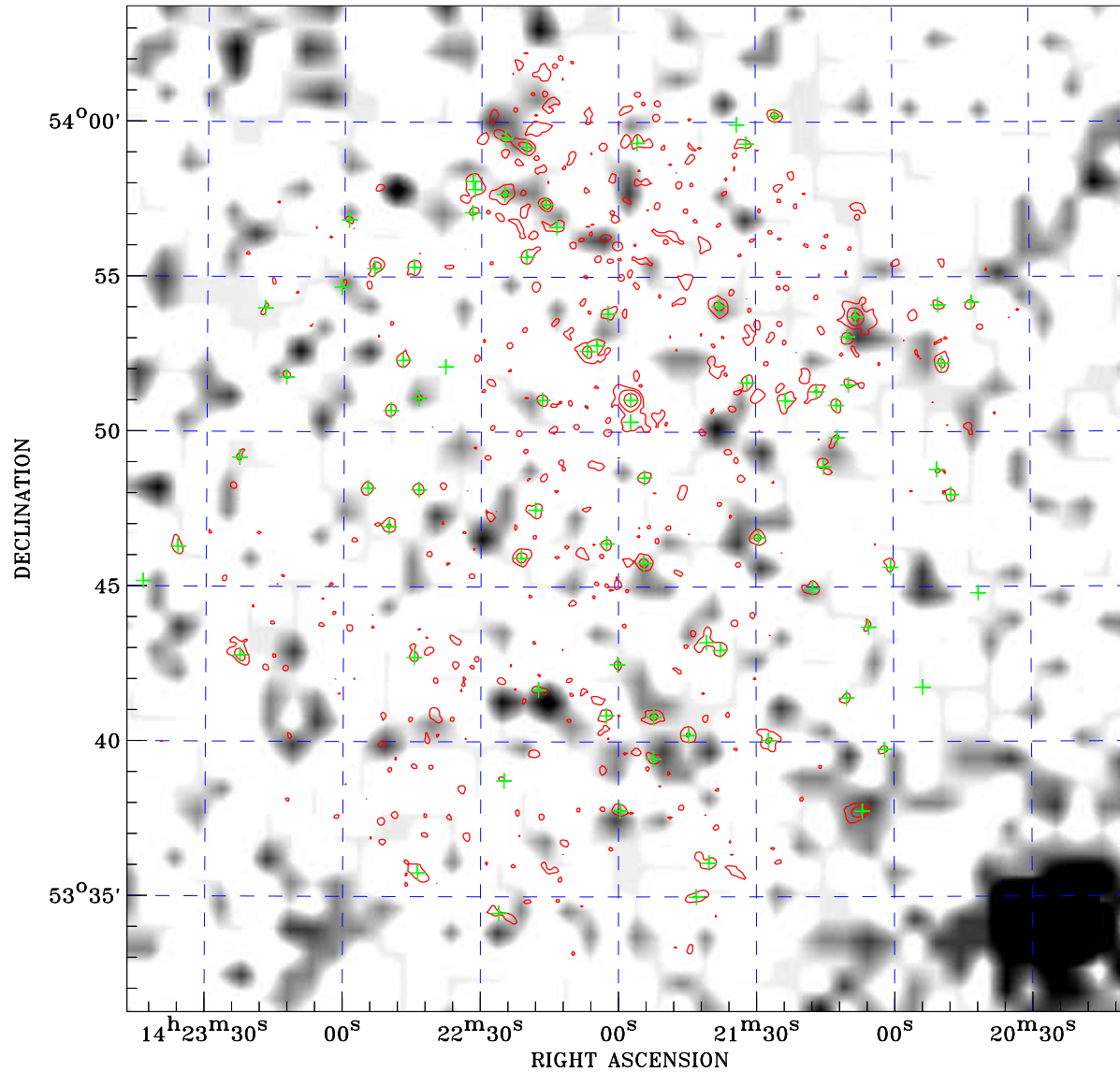


# PDF XMM RASS image ACDS V10.0



RASS image gray scale (Log) :

$\langle 1.264\text{E-}03$   $\rangle 5.678\text{E-}03$

(counts s<sup>-1</sup>)

⊙ Epic image contour  
levels at 2, 7 and 30 $\sigma$

+ Detected Epic sources

Principal Investigator :  
Dr Andrea Merloni

XMM target name :  
XMM-RM8

Observation ID :  
0804270701

Epic image :  
 $\alpha$  : 14 21 57.51  
 $\delta$  : +53 47 32.0  
Energy band : 0.2–12.0 keV  
MOS1 : 15554 s  
MOS2 : 15543 s  
PN : 13931 s

Contour levels (counts) :  
2 $\sigma$  :1.415E+00 7 $\sigma$  :3.218E+00  
30 $\sigma$  :1.151E+01

RASS image :  
Observation : 930724p  
Instrument : PSPCC  
 $\alpha$  : 14 28 46.17  
 $\delta$  : +56 05 58.2

XMM SSC  
Apr 17 12:50:36 2019