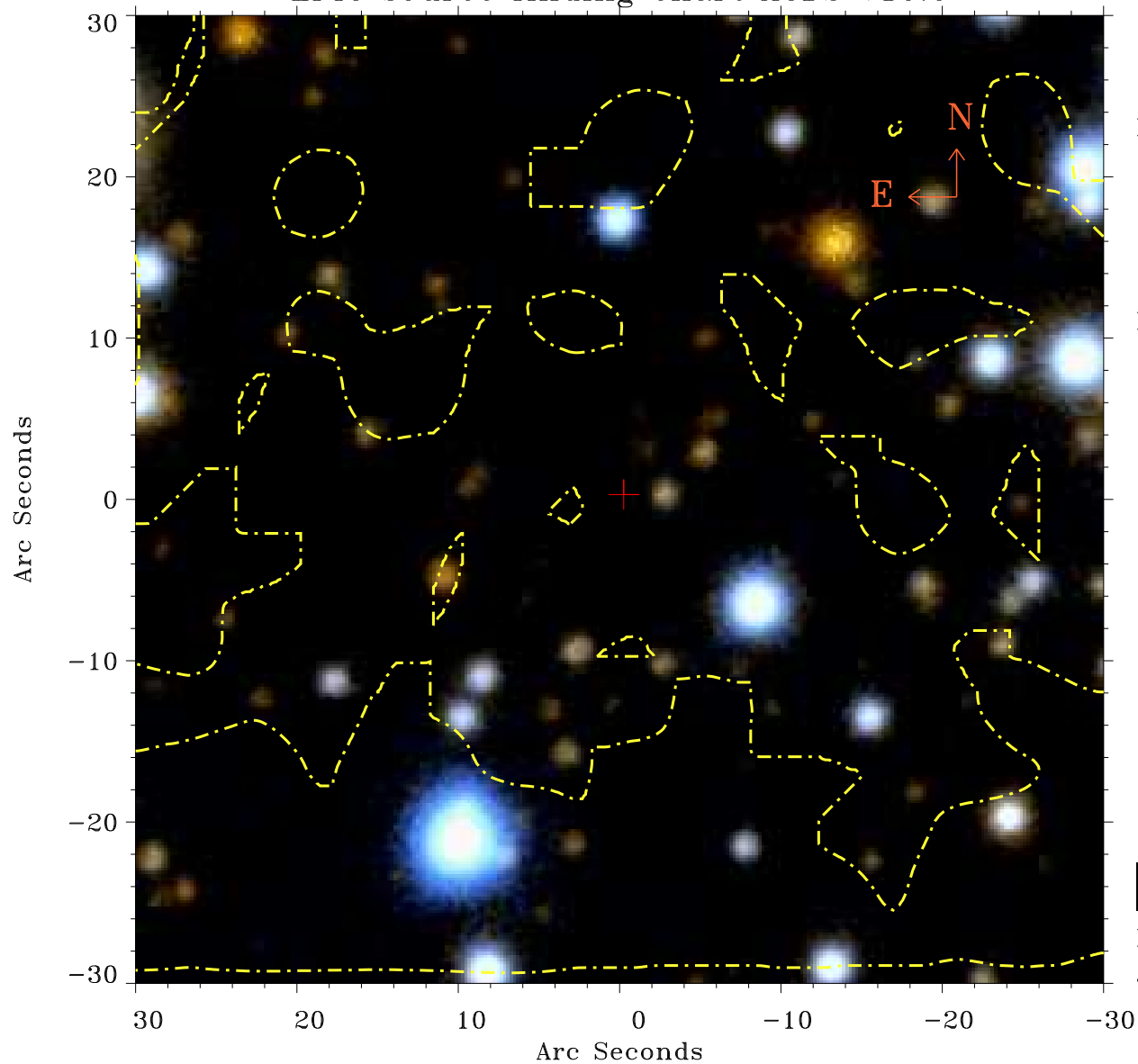


EPIC source finding chart ACDS V10.0



Principal Investigator :

Dr Fabio Pintore

XMM target name :

XTE J1810-197

OBS ID : 804590501

Source number : 6

X-ray coordinates :

α : 18 09 49.72

δ : -19 42 58.3

Center coordinates :

α : 18 09 49.73

δ : -19 42 58.3

Plate reference :

Origin : PanSTARRS-DR1

Color coding :

z band ●

(z+g)/2 ●

g band ●

Contour levels (counts) :



XMM SSC

Jul 18 06:49:59 2019