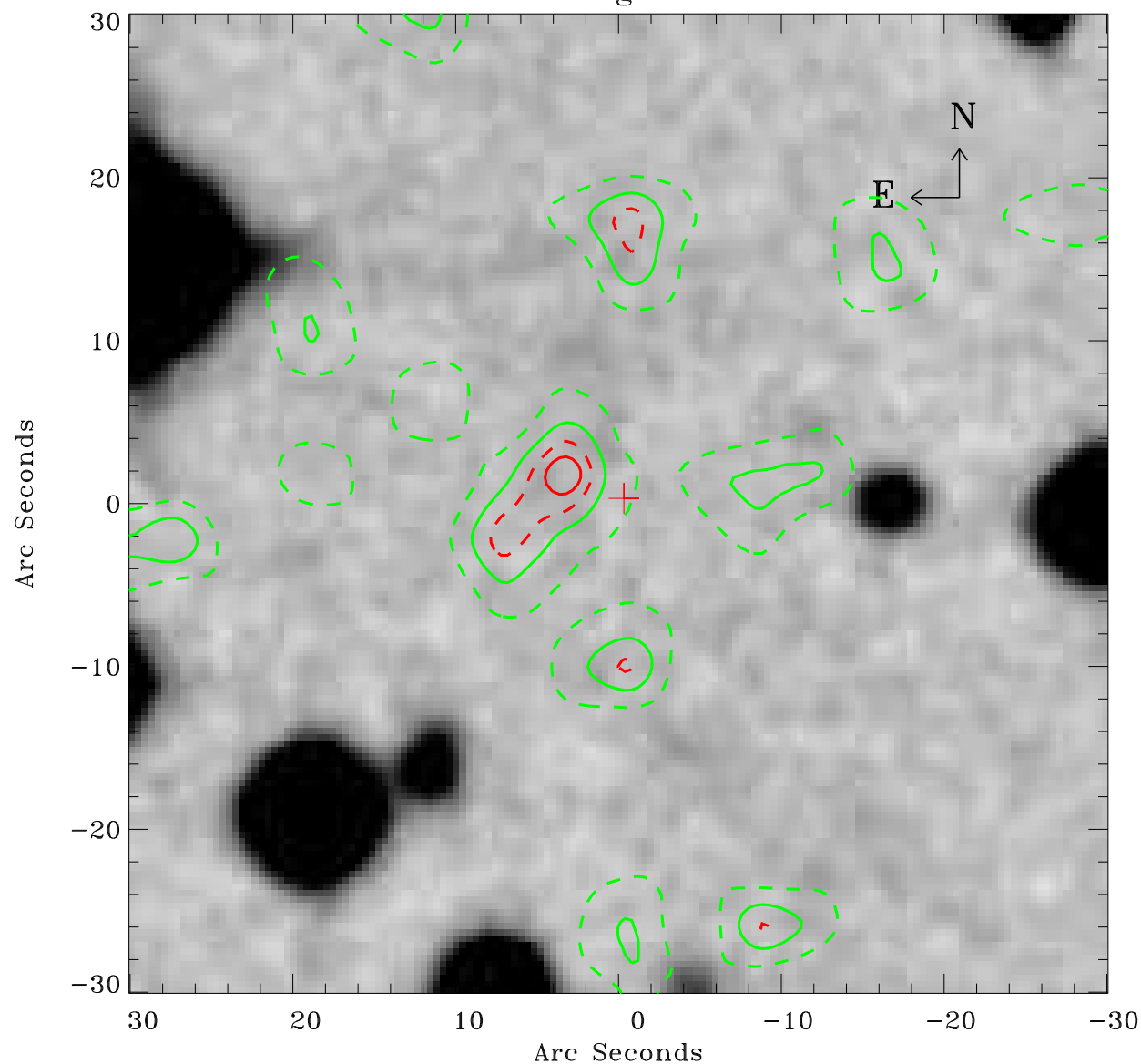


# EPIC source finding chart ACDS V10.0



Principal Investigator :

Dr Jorge Sanz-Forcada

XMM target name :

WASP-121

OBS ID : 804790601

Source number : 31

X-ray coordinates :

$\alpha$  : 07 10 45.92

$\delta$  : -39 07 49.8

Center coordinates :

$\alpha$  : 07 10 45.92

$\delta$  : -39 07 49.7

Plate reference :

Origin : CDS HIPs Network

Plate : MAMA srcj

Pixel : 0.40 "/pix

Contour levels (counts) :

1.01E+00 1.95E+00

2.71E+00 3.30E+00

XMM SSC

Apr 23 03:05:24 2019