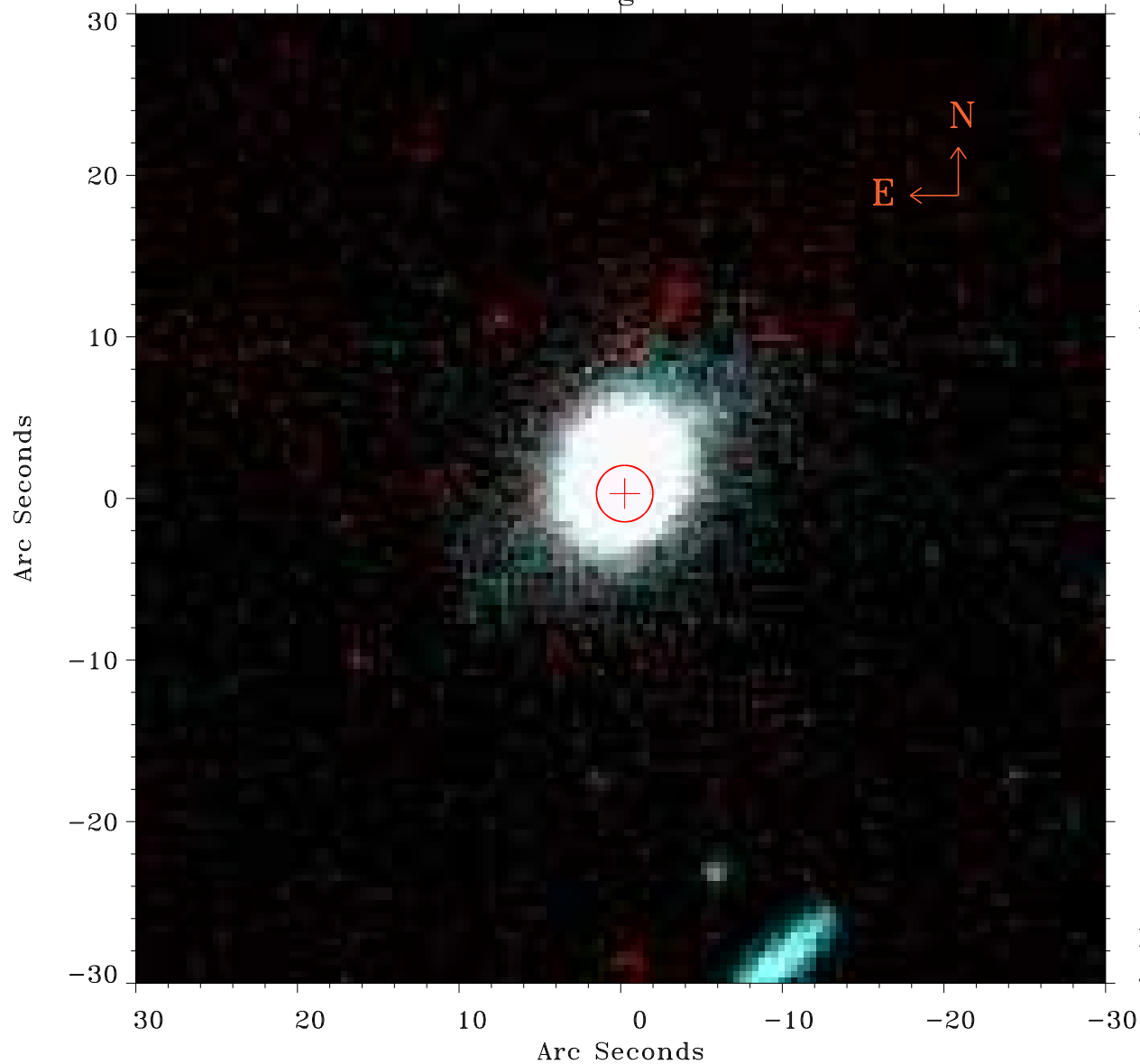


EPIC source finding chart ACDS V10.0



Principal Investigator :
Prof Hagai Netzer

XMM target name :
SDSS J215056.58-064

OBS ID : 820080301
Source number : 7

X-ray coordinates :
 α : 21 50 56.59
 δ : -06 49 12.3

Center coordinates :
 α : 21 50 56.58
 δ : -06 49 12.2

Plate reference :
Origin : PanSTARRS-DR1

Color coding :
z band ●
(z+g)/2 ●
g band ●

Error:
R90 : 1.7 arsec

XMM SSC
Jan 19 03:04:52 2025