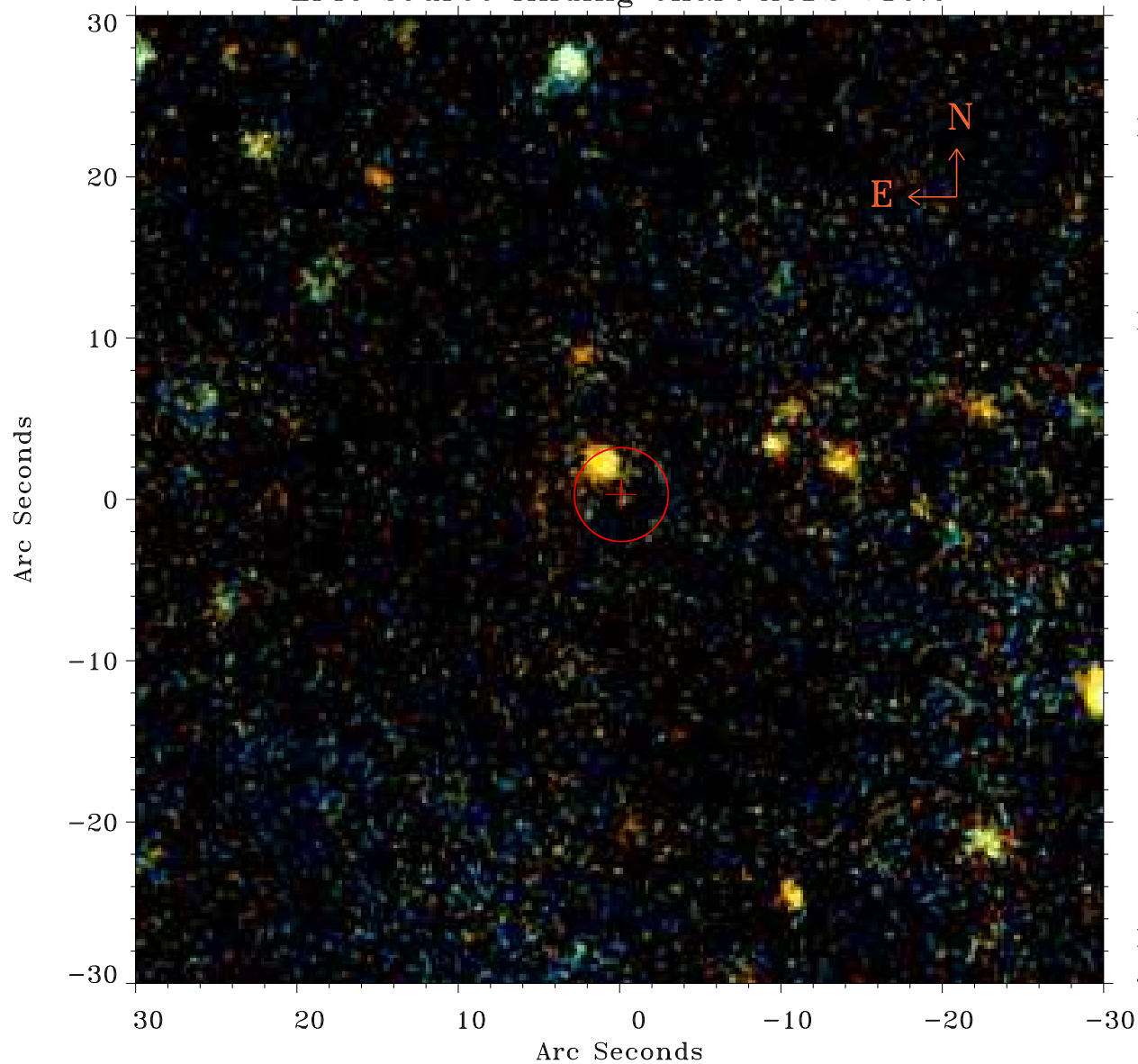


# EPIC source finding chart ACDS V10.0



Principal Investigator :

Dr Ewan O'Sullivan

XMM target name :

NGC5444

OBS ID : 821871001

Source number : 100

X-ray coordinates :

$\alpha$  : 14 02 59.07

$\delta$  : +34 56 46.7

Center coordinates :

$\alpha$  : 14 02 59.07

$\delta$  : +34 56 46.6

Plate reference :

Origin : PanSTARRS-DR1

Color coding :

z band ●

(z+g)/2 ●

g band ●

Error:

R90 : 2.9 arsec

XMM SSC

Jul 18 00:20:47 2019