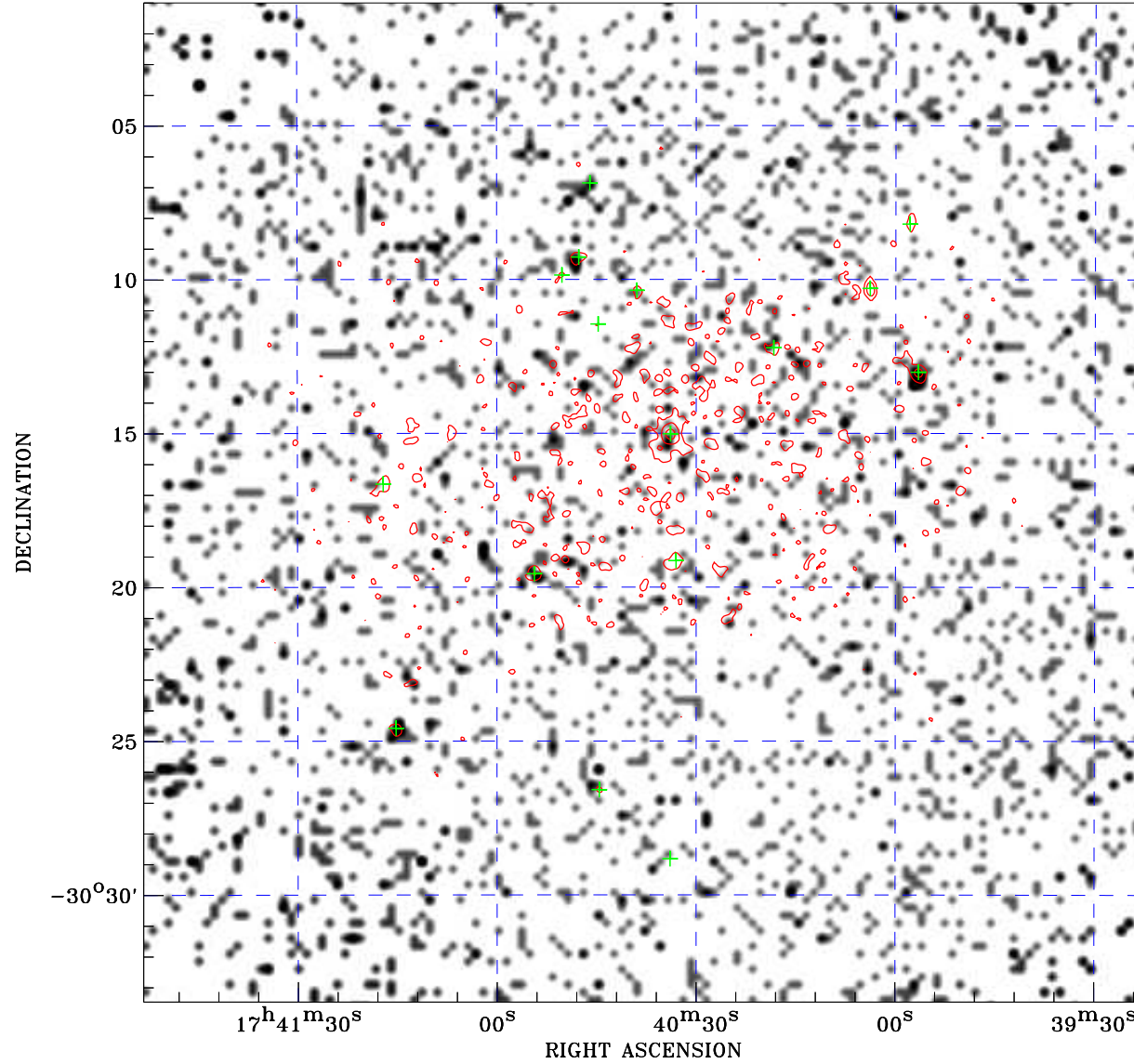


PDF XMM ROSAT image ACDS V10.0



ROSAT image gray scale (Log) :

$\langle 7.293\text{E-}05$ $\rangle 5.610\text{E-}04$

(counts s⁻¹)

⊙ Epic image contour
levels at 2, 7 and 30 σ

+ Detected Epic sources

Principal Investigator :
Dr Bettina Posselt

XMM target name :
PSR J1740-3015

Observation ID :
0823030101

Epic image :

α : 17 40 37.94
 δ : -30 17 15.1

Energy band : 0.2-12.0 keV

MOS1 : 6433 s
MOS2 : 6416 s
PN : 4241 s

Contour levels (counts) :
2 σ :1.714E+00 7 σ :4.046E+00
30 σ :1.478E+01

Nearest ROSAT image
from Epic image center :
Observation : 400038p
Instrument : PSPCB
 α : 17 40 47.53
 δ : -30 19 48.2

Other ROSAT images :
None

XMM SSC
Jul 17 17:01:10 2019