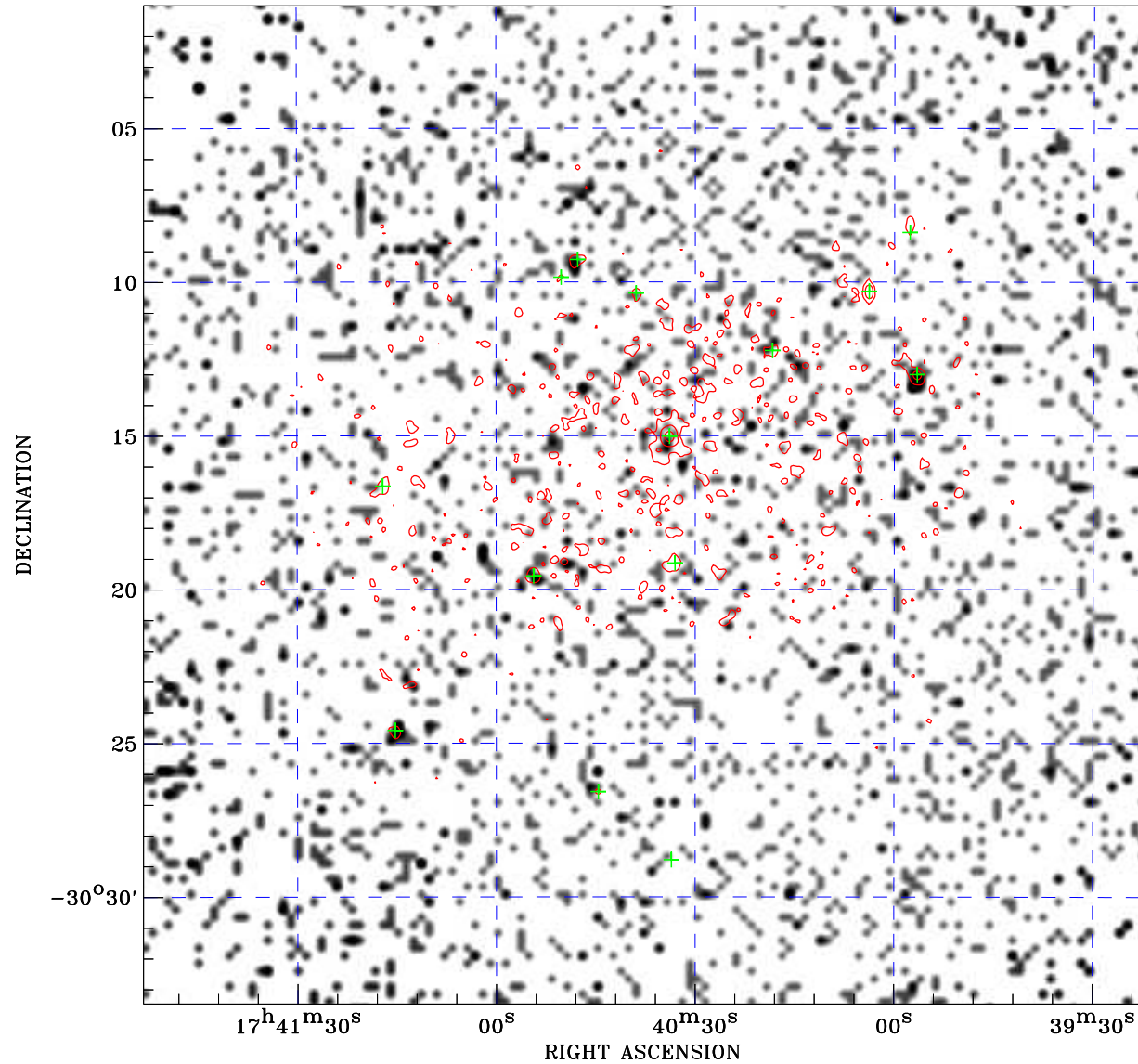


PDF XMM ROSAT image ACDS V10.0



ROSAT image gray scale (Log) :
[Scale bar from light to dark]
< 7.293E-05 > 5.610E-04
(counts s⁻¹)

⊙ Epic image contour
levels at 2, 7 and 30σ
+ Detected Epic sources

Principal Investigator :
Dr Bettina Posselt

XMM target name :
PSR J1740-3015

Observation ID :
0823030101

Epic image :

α : 17 40 37.94
δ : -30 17 15.1

Energy band : 0.2-12.0 keV

MOS1 : 6433 s
MOS2 : 6416 s
PN : 4241 s

Contour levels (counts) :
2σ :1.711E+00 7σ :4.041E+00
30σ :1.476E+01

Nearest ROSAT image
from Epic image center :
Observation : 400038p
Instrument : PSPCB
α : 17 40 47.53
δ : -30 19 48.2

Other ROSAT images :
None

XMM SSC
Feb 7 22:53:13 2025