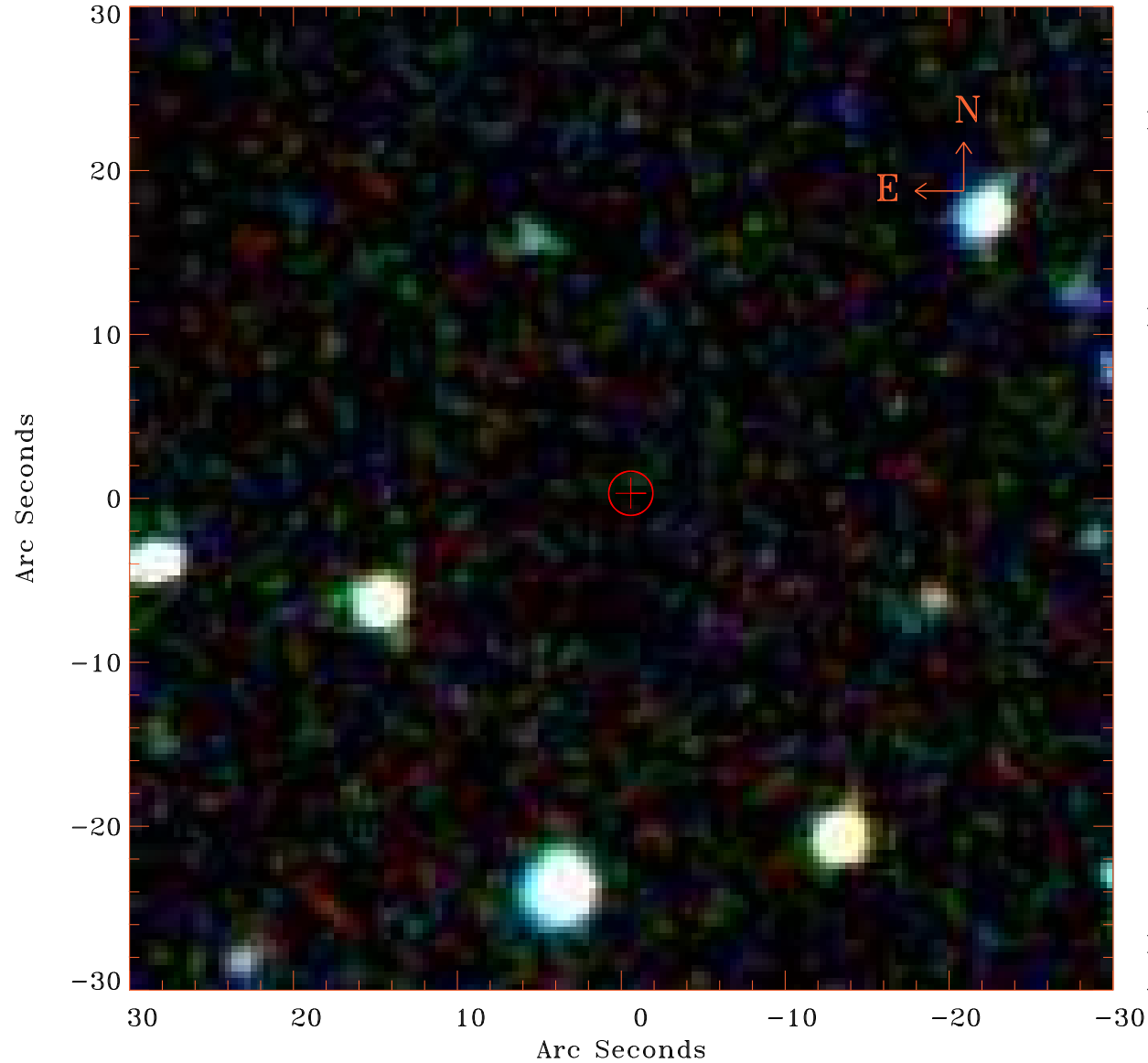


EPIC source finding chart V10.0



Principal Investigator :

Dr M S Arnaud-Ettori

XMM target name :

PSZ2G046.88+56.48

OBS ID : 827010601

Source number : 10

X-ray coordinates :

α : 15 23 51.72

δ : +30 02 05.6

Center coordinates :

α : 15 23 51.74

δ : +30 02 05.7

Plate reference :

Origin : SDSS

Color coding :

i band ●

r band ●

g band ●

Error circle :

R_{90} (") : 1.3

XMM SSC

Apr 20 11:46:28 2019