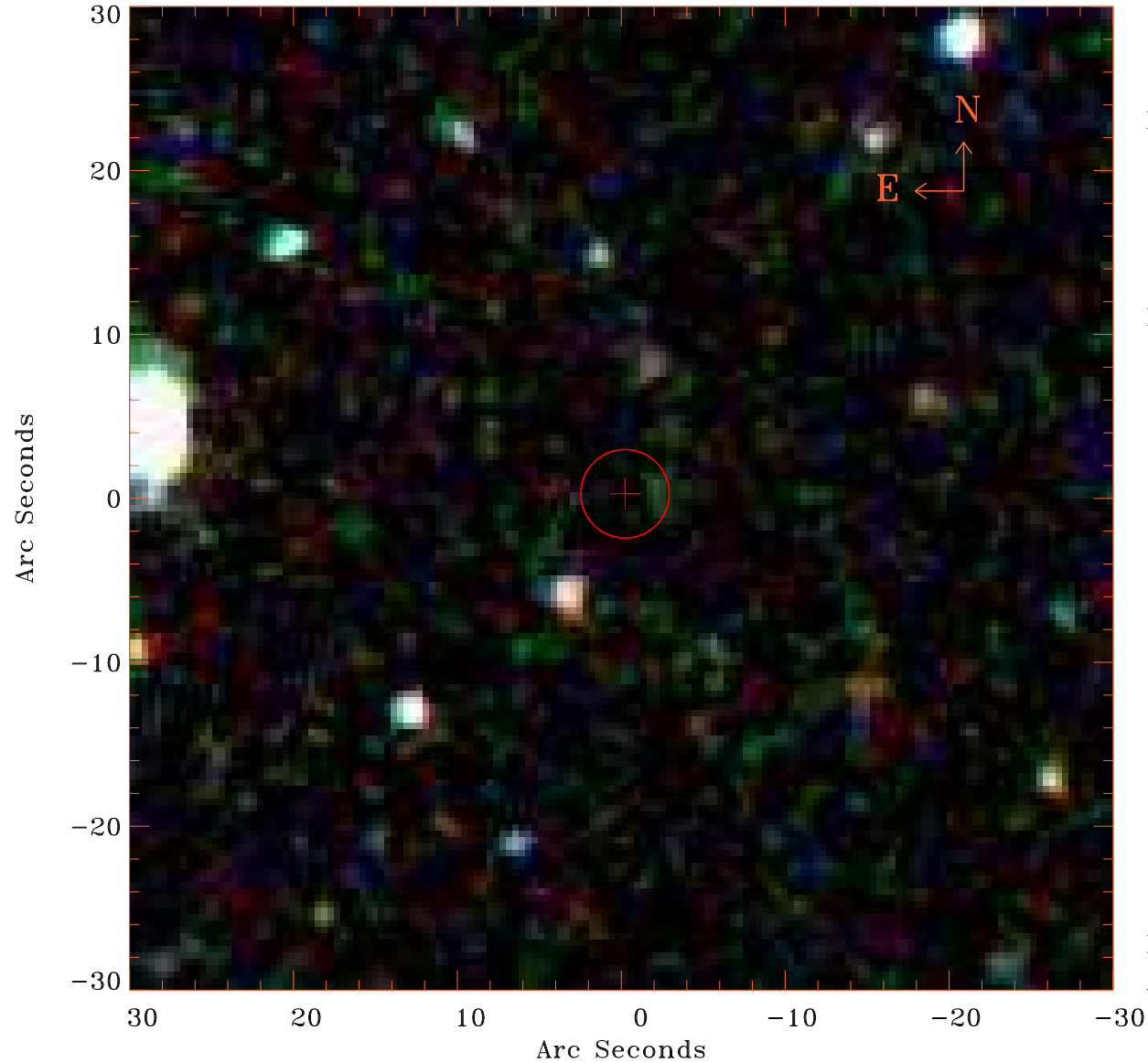


# EPIC source finding chart V10.0



Principal Investigator :

Dr M S Arnaud-Ettori

XMM target name :

PSZ2G046.88+56.48

OBS ID : 827010601

Source number : 84

X-ray coordinates :

$\alpha$  : 15 25 10.11

$\delta$  : +29 54 16.1

Center coordinates :

$\alpha$  : 15 25 10.10

$\delta$  : +29 54 16.2

Plate reference :

Origin : SDSS

Color coding :

i band ●

r band ●

g band ●

Error circle :

$R_{90}$  (") : 2.7

XMM SSC

Apr 20 11:47:17 2019