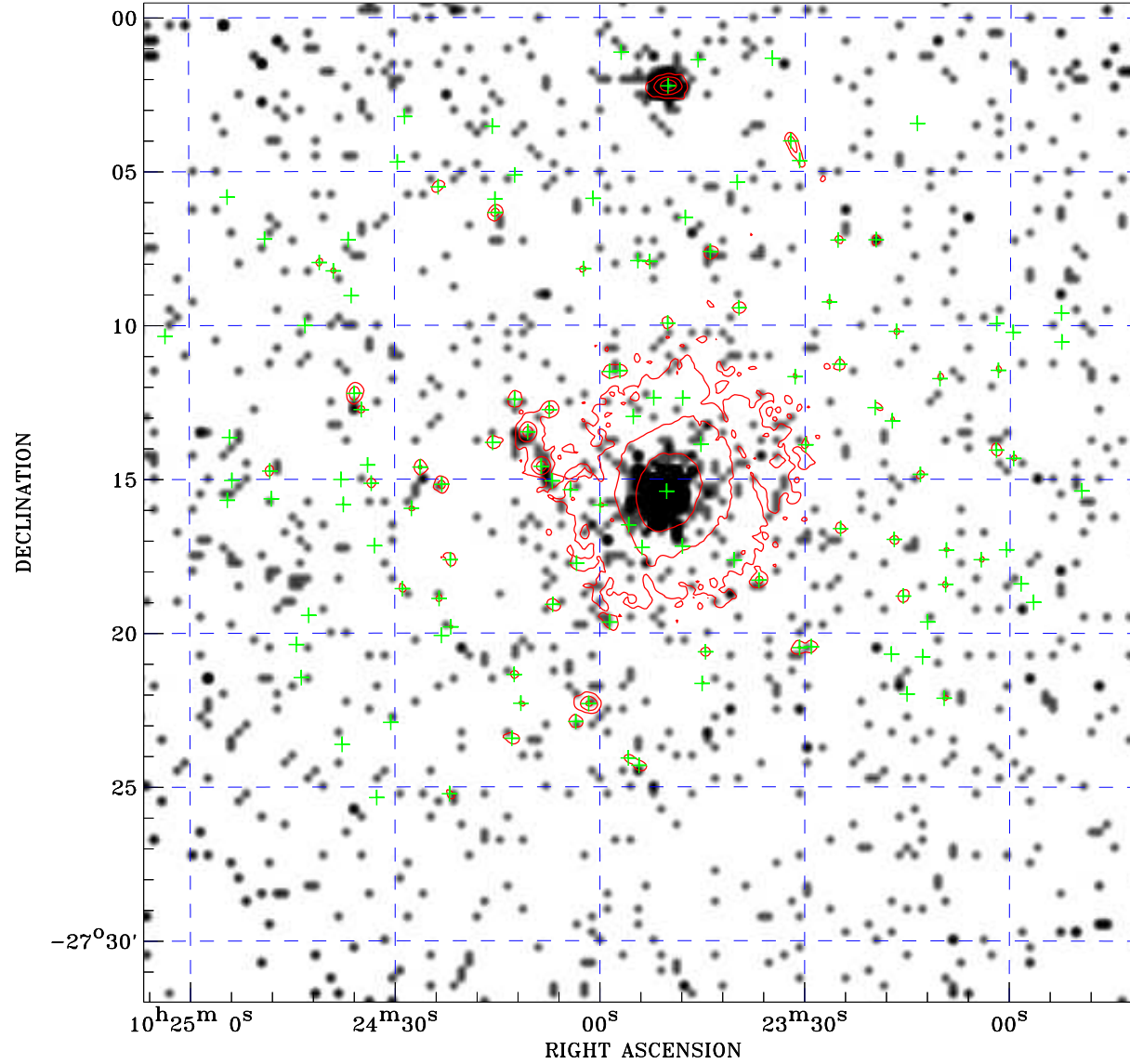



# PDF XMM ROSAT image ACDS V10.0



ROSAT image gray scale (Log) :  
  
 $\langle 1.818\text{E}-04$   $\rangle 1.568\text{E}-03$   
(counts s<sup>-1</sup>)

⊙ Epic image contour  
levels at 2, 7 and 30 $\sigma$

+ Detected Epic sources

Principal Investigator :  
Dr M S Arnaud-Ettori

XMM target name :  
PSZ2G266.83+25.08

Observation ID :  
0827011001

Epic image :  
 $\alpha$  : 10 23 53.65  
 $\delta$  : -27 15 45.8  
Energy band : 0.2-12.0 keV  
MOS1 : 37688 s  
MOS2 : 37760 s  
PN : 32816 s

Contour levels (counts) :  
2 $\sigma$  :4.275E+00 7 $\sigma$  :1.042E+01  
30 $\sigma$  3.870E+01

Nearest ROSAT image  
from Epic image center :  
Observation : 800533p  
Instrument : PSPCB  
 $\alpha$  : 10 24 03.93  
 $\delta$  : -27 18 36.2

Other ROSAT images :  
None

XMM SSC  
May 3 07:44:47 2019