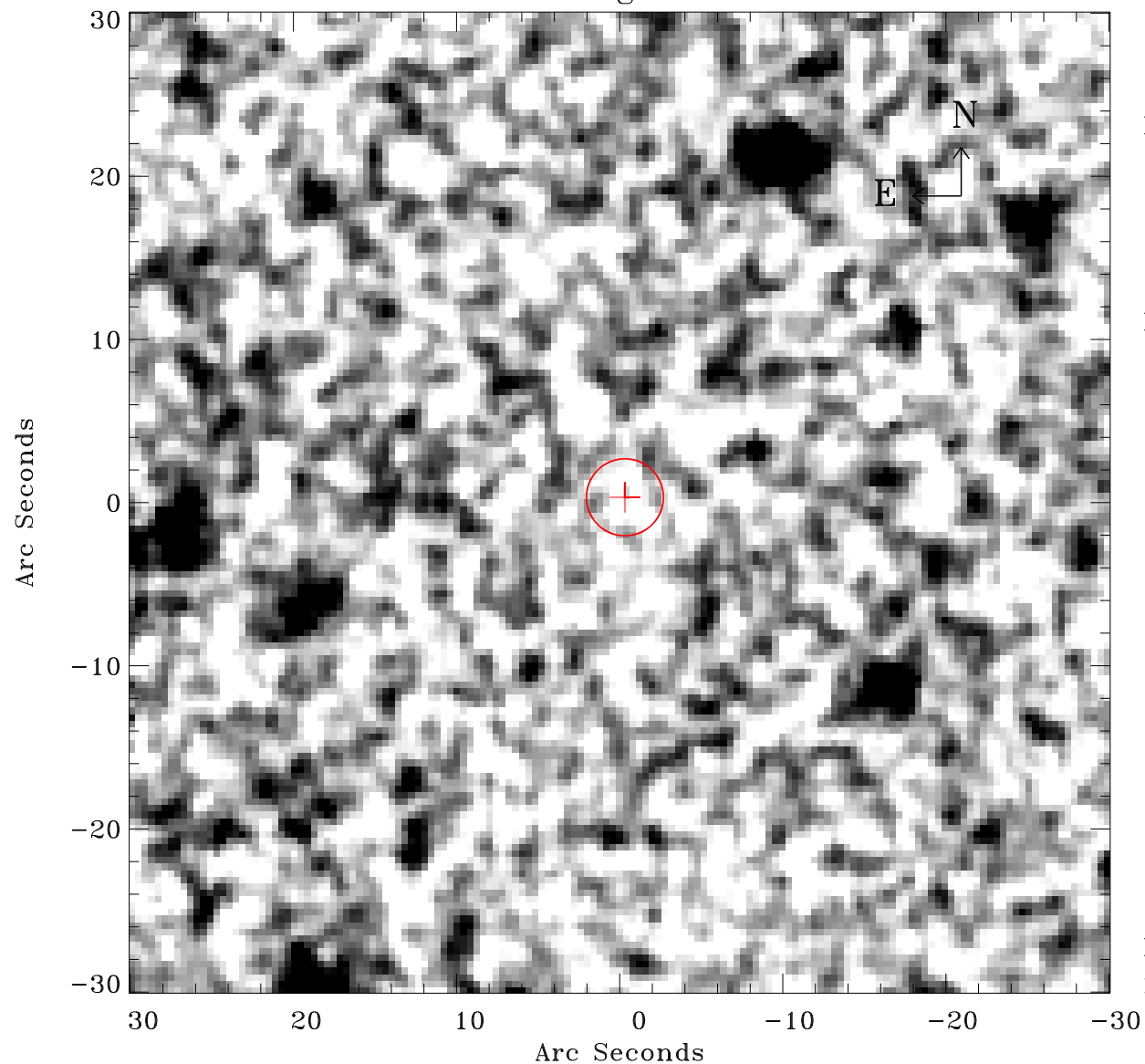


# EPIC source finding chart ACDS V10.0



Principal Investigator :

Dr M S Arnaud-Ettori

XMM target name :

PSZ2G243.15-73.84

OBS ID : 827011301

Source number : 158

X-ray coordinates :

$\alpha$  : 01 58 28.36

$\delta$  : -34 13 11.7

Center coordinates :

$\alpha$  : 01 58 28.36

$\delta$  : -34 13 11.6

Plate reference :

Origin : CDS HIPs Network

Plate : MAMA srcj

Pixel : 0.40 "/pix

Error circle :

$R_{90}$  (") : 2.3

XMM SSC

May 1 23:31:56 2019