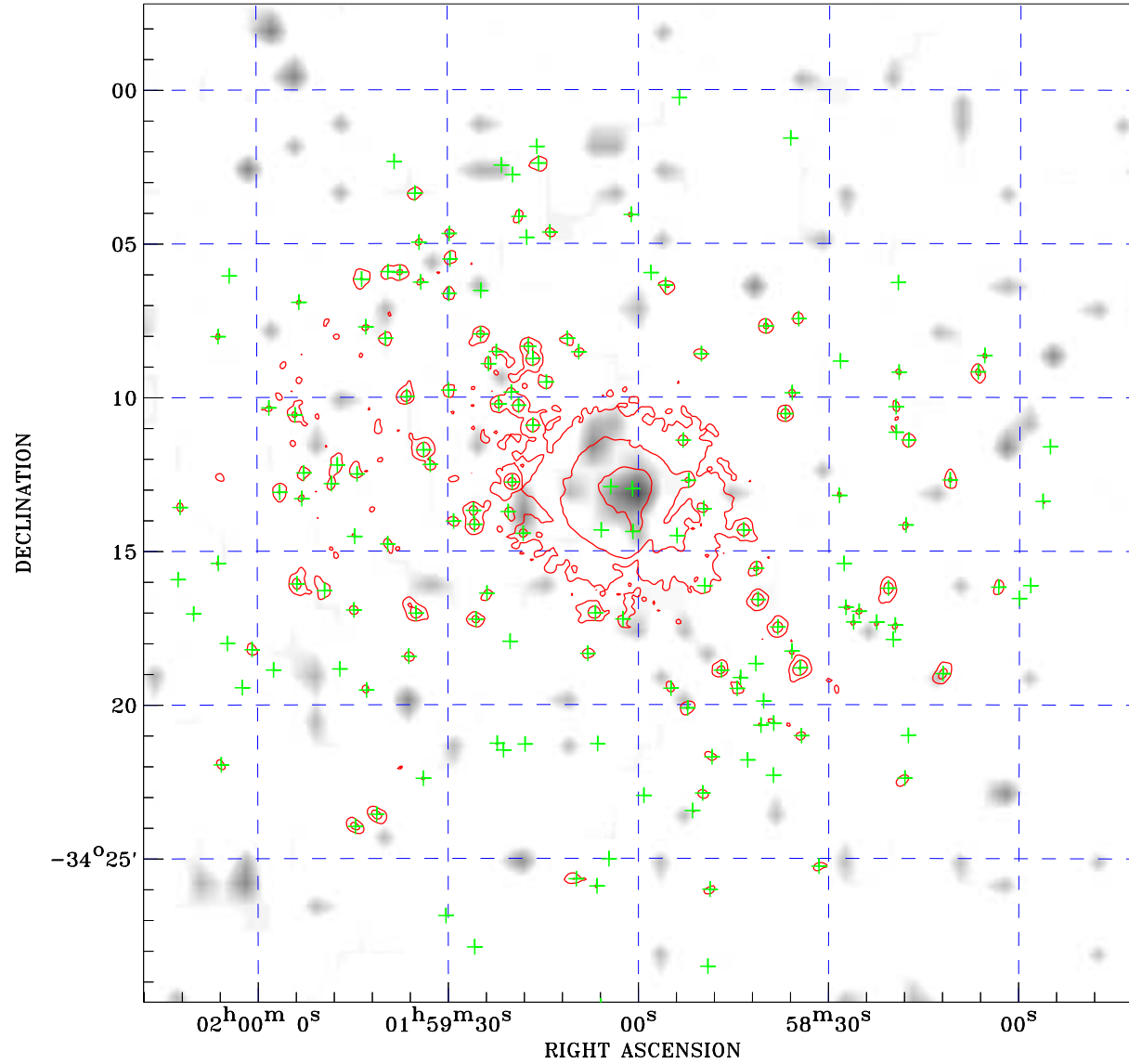



PDF XMM RASS image ACDS V10.0



RASS image gray scale (Log) :

 < 2.415E-03 > 2.271E-02
 (counts s⁻¹)

⊙ Epic image contour
 levels at 2, 7 and 30σ

+ Detected Epic sources

Principal Investigator :
 Dr M S Arnaud-Ettori

XMM target name :
 PSZ2G243.15-73.84

Observation ID :
 0827011301

Epic image :
 α : 01 58 59.33
 δ : -34 13 26.8
 Energy band : 0.2-12.0 keV
 MOS1 : 50420 s
 MOS2 : 50426 s
 PN : 44277 s

Contour levels (counts) :
 2σ : 4.366E+00 7σ : 9.881E+00
 30σ : 3.525E+01

RASS image :
 Observation : 932305p
 Instrument : PSPCC
 α : 01 58 32.53
 δ : -33 54 00.3

XMM SSC
 May 1 23:31:17 2019