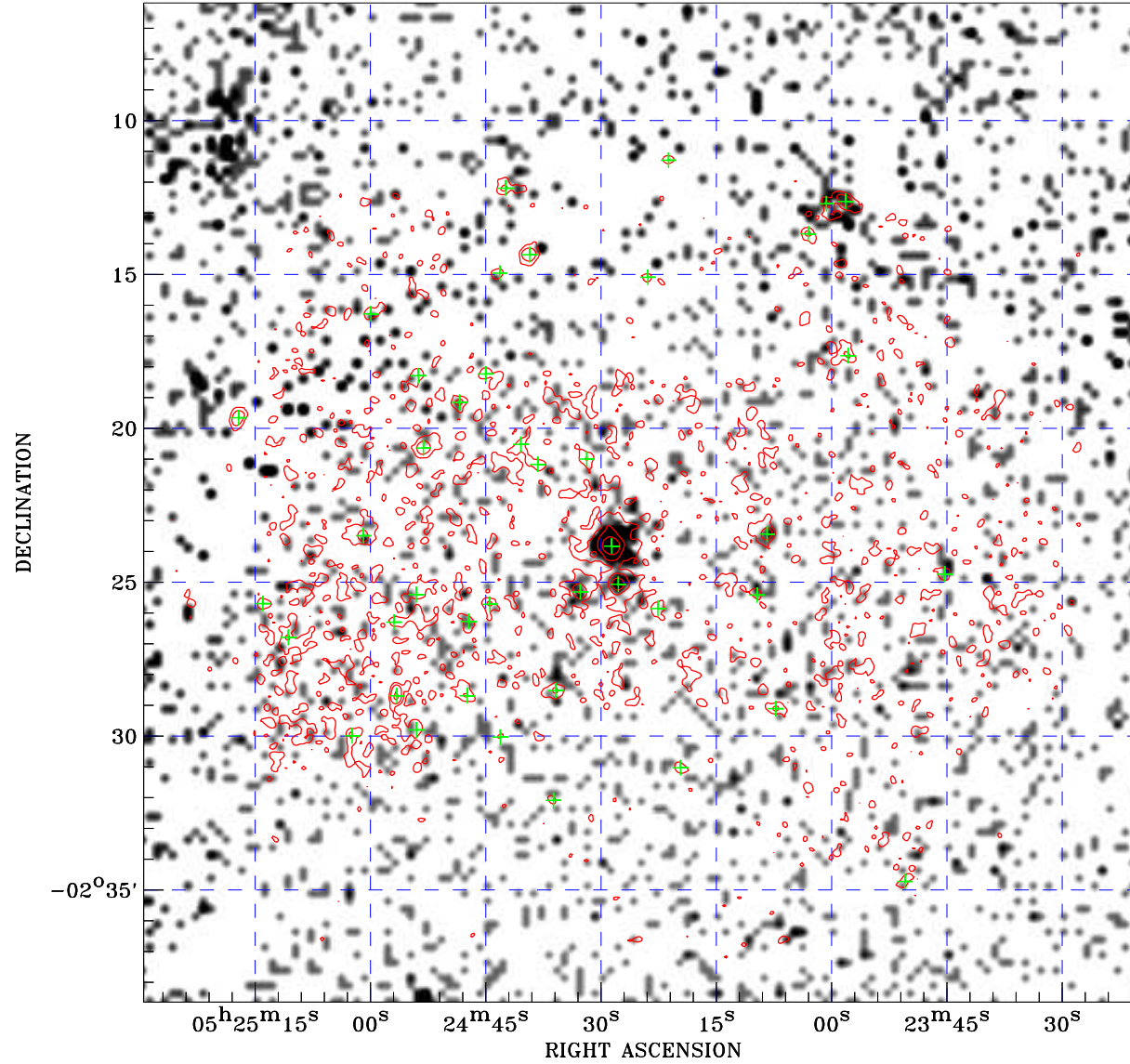



# PDF XMM ROSAT image ACDS V10.0



ROSAT image gray scale (Log) :  
  
 $\langle 1.122\text{E}-04$   $\rangle 9.041\text{E}-04$   
 (counts s<sup>-1</sup>)

⊙ Epic image contour  
 levels at 2, 7 and 30 $\sigma$

+ Detected Epic sources

Principal Investigator :  
 Dr Yael Naze

XMM target name :  
 eta Ori

Observation ID :  
 0840200301

Epic image :  
 $\alpha$  : 05 24 24.51  
 $\delta$  : -02 22 24.7  
 Energy band : 0.2–12.0 keV  
 MOS1 : 8785 s  
 MOS2 : 8873 s  
 PN : 5140 s

Contour levels (counts) :  
 2 $\sigma$  :7.550E-01 7 $\sigma$  :1.798E+00  
 30 $\sigma$  6.596E+00

Nearest ROSAT image  
 from Epic image center :  
 Observation : 200037p-0  
 Instrument : PSPCB  
 $\alpha$  : 05 24 19.23  
 $\delta$  : -02 36 00.2

Other ROSAT images :  
 None

XMM SSC  
 Oct 4 16:49:15 2019