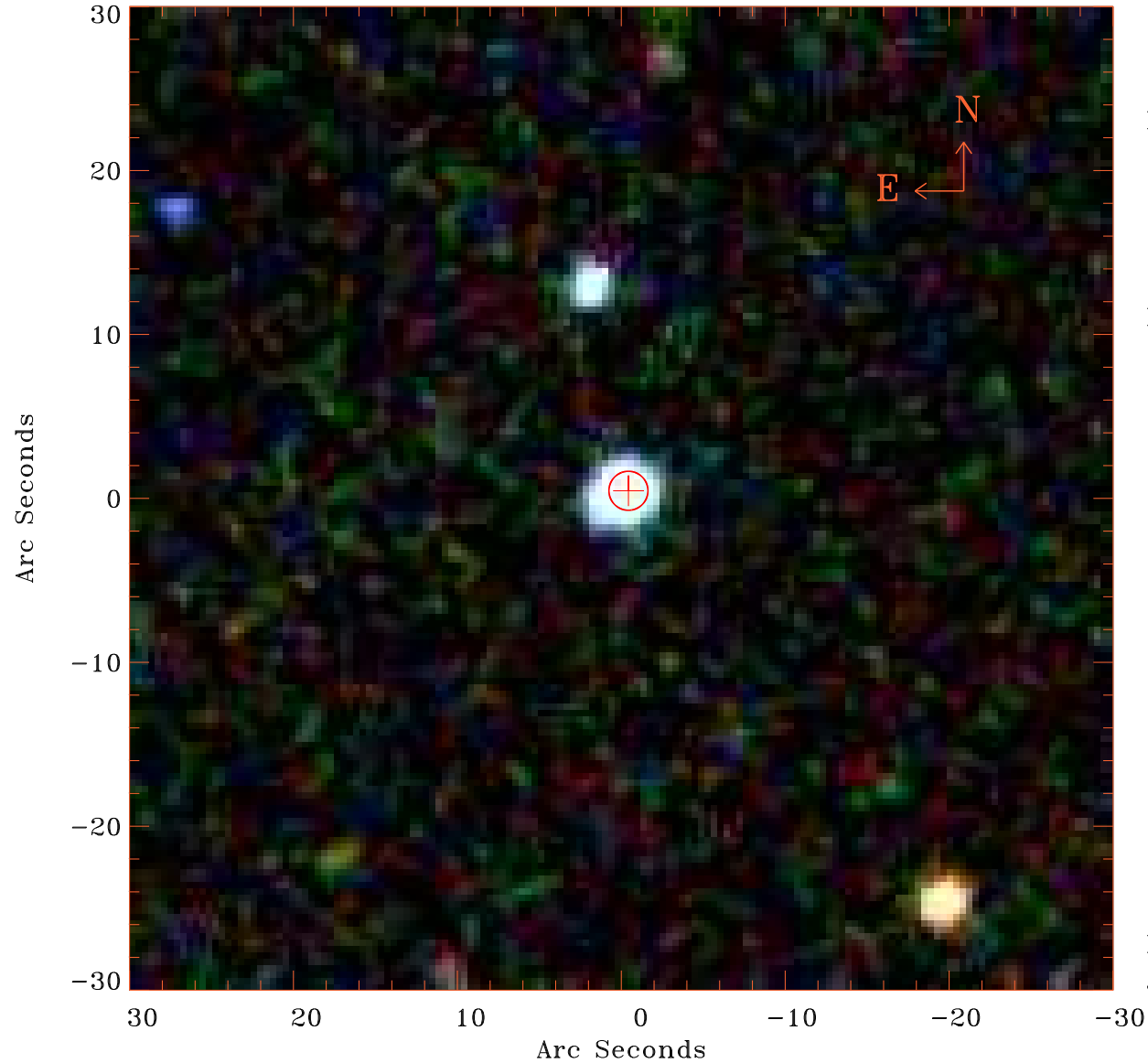


EPIC source finding chart V10.0



Principal Investigator :

Dr Akos Bogdan

XMM target name :

2MASX J09572689+491

OBS ID : 842080801

Source number : 5

X-ray coordinates :

α : 09 56 15.97

δ : +49 19 17.6

Center coordinates :

α : 09 56 15.98

δ : +49 19 17.5

Plate reference :

Origin : SDSS

Color coding :

i band ●

r band ●

g band ●

Error circle :

R_{90} (") : 1.2

XMM SSC

Jul 16 11:41:32 2019