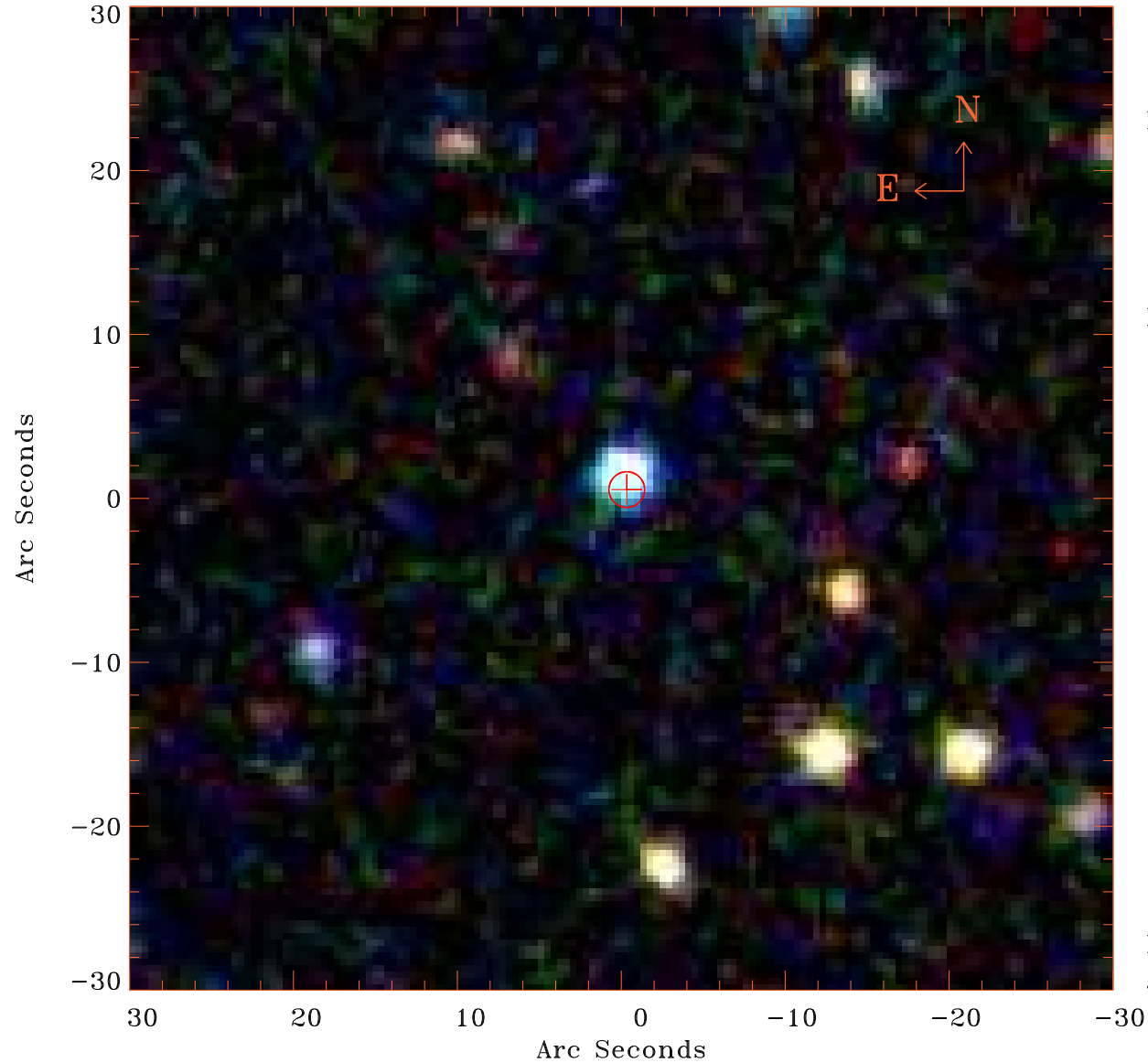


# EPIC source finding chart V10.0



Principal Investigator :

Dr Akos Bogdan

XMM target name :

2MASX J09572689+491

OBS ID : 842080801

Source number : 10

X-ray coordinates :

$\alpha$  : 09 57 35.31

$\delta$  : +49 20 13.5

Center coordinates :

$\alpha$  : 09 57 35.30

$\delta$  : +49 20 13.4

Plate reference :

Origin : SDSS

Color coding :

i band ●

r band ●

g band ●

Error circle :

$R_{90}$  (") : 1.1

XMM SSC

Jul 16 11:42:11 2019