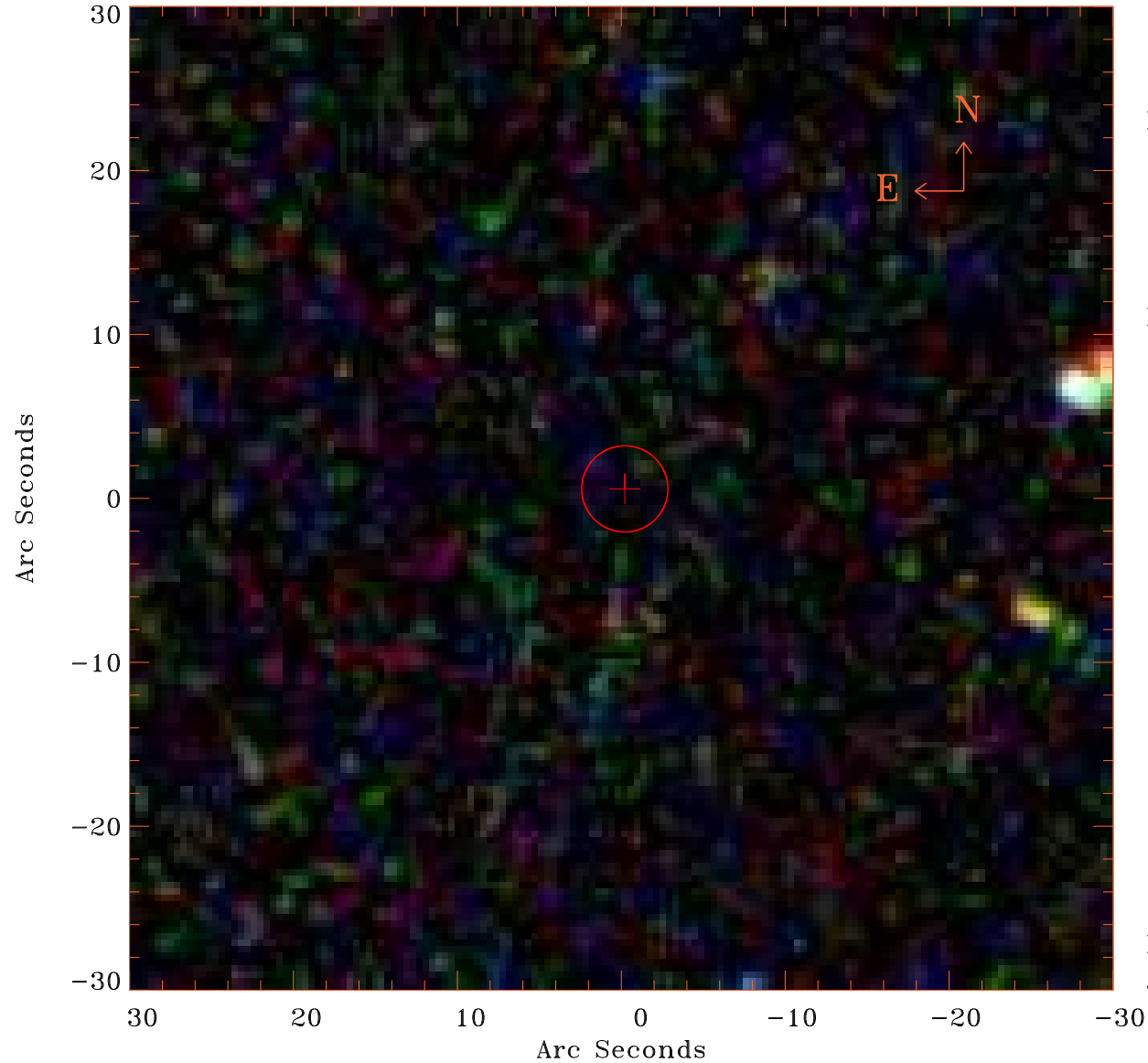


EPIC source finding chart V10.0



Principal Investigator :

Dr Akos Bogdan

XMM target name :

2MASX J09572689+491

OBS ID : 842080801

Source number : 65

X-ray coordinates :

α : 09 58 11.12

δ : +49 09 21.0

Center coordinates :

α : 09 58 11.10

δ : +49 09 20.8

Plate reference :

Origin : SDSS

Color coding :

i band ●

r band ●

g band ●

Error circle :

R_{90} (") : 2.6

XMM SSC

Jul 16 11:42:23 2019