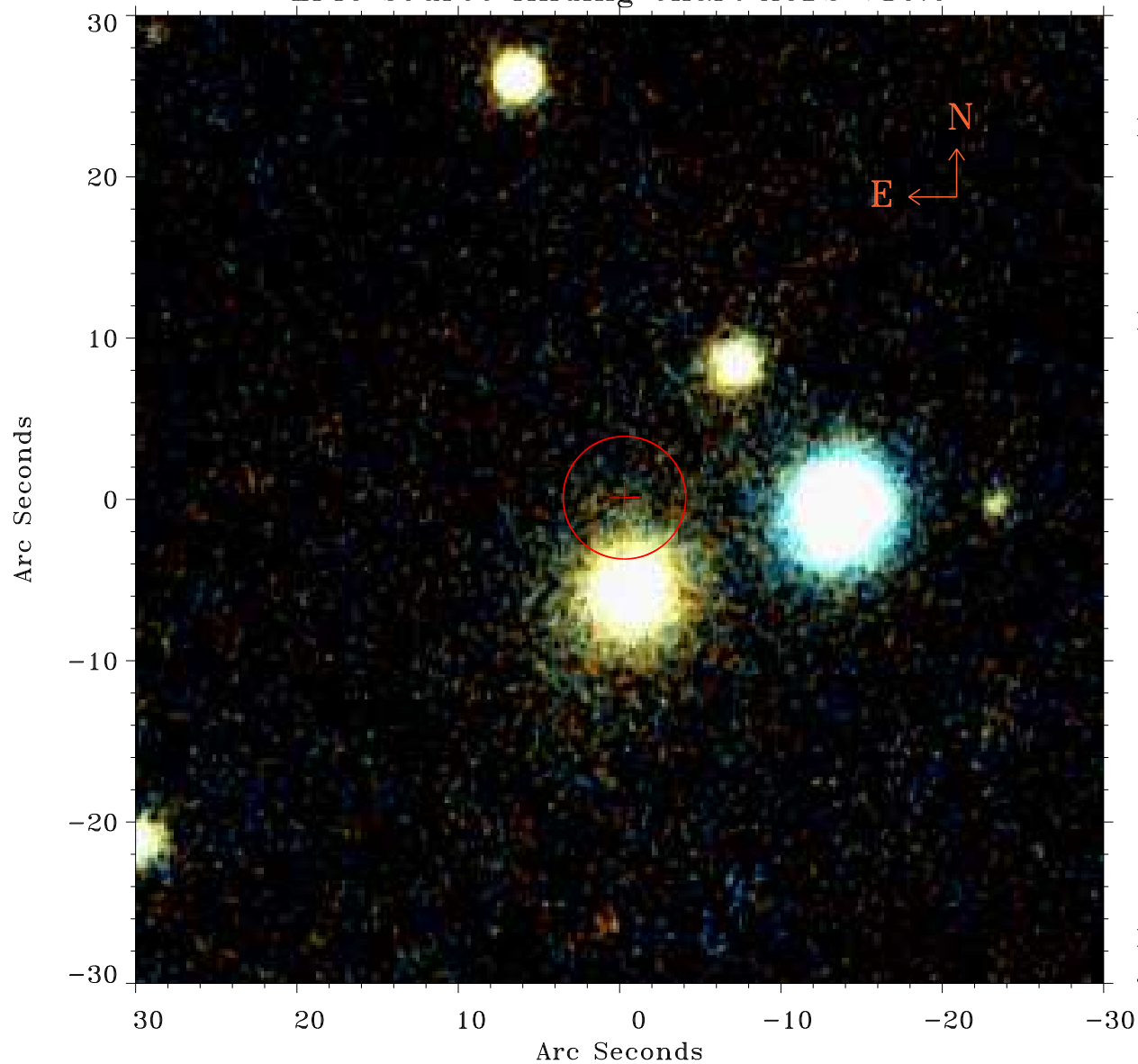


# EPIC source finding chart ACDS V10.0



Principal Investigator :

Prof GianLuca Israel

XMM target name :

Holmberg II

OBS ID : 843840201

Source number : 16

X-ray coordinates :

$\alpha$  : 08 18 29.38

$\delta$  : +70 47 38.2

Center coordinates :

$\alpha$  : 08 18 29.40

$\delta$  : +70 47 38.3

Plate reference :

Origin : PanSTARRS-DR1

Color coding :

z band ●

(z+g)/2 ●

g band ●

Error:

R90 : 3.8 arsec

XMM SSC

Jan 24 19:18:14 2022