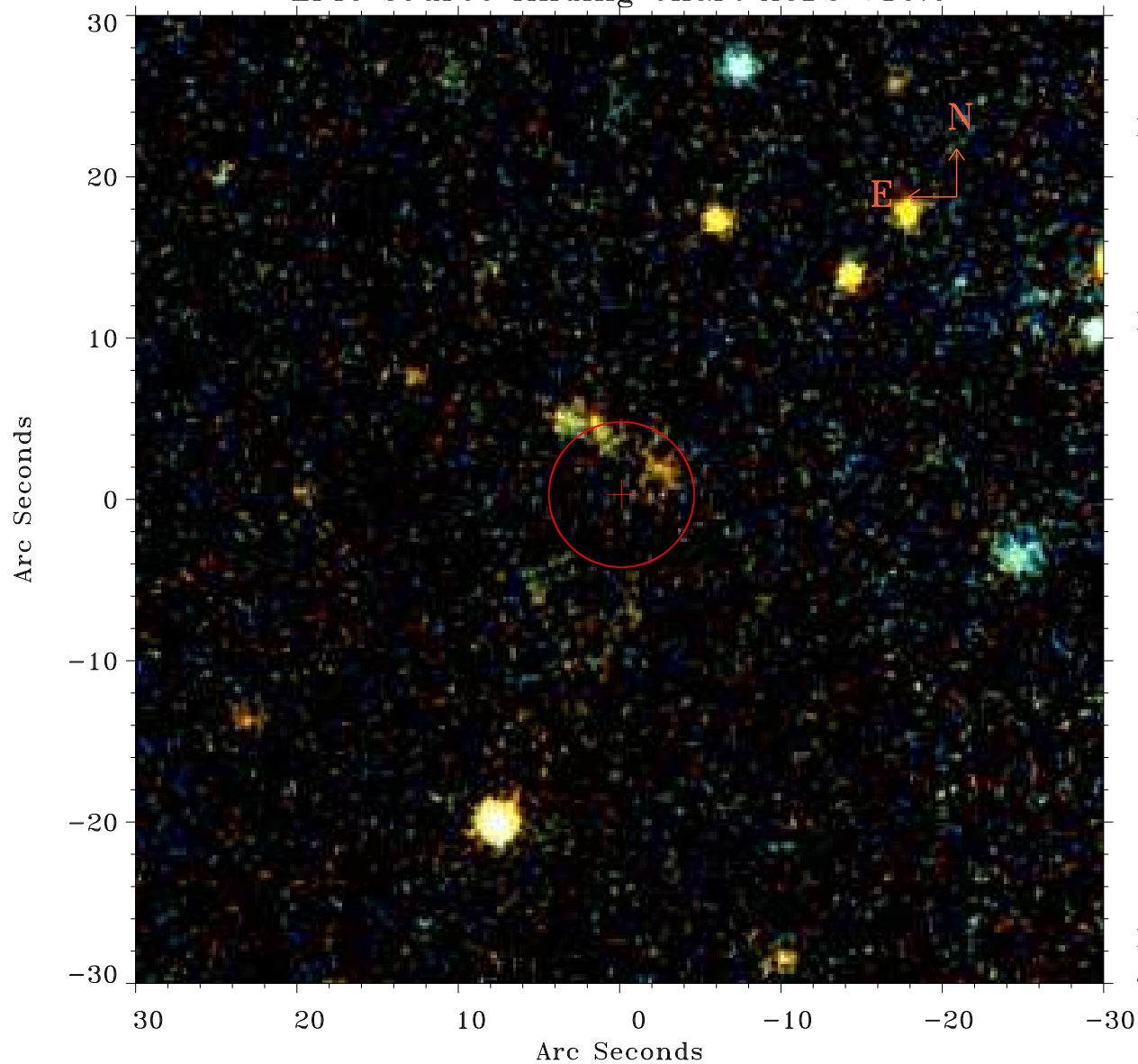


# EPIC source finding chart ACDS V10.0



Principal Investigator :

Dr Florian Pacaud

XMM target name :

A3528/A3532 Filamen

OBS ID : 861150101

Source number : 47

X-ray coordinates :

$\alpha$  : 12 56 17.76

$\delta$  : -29 34 50.3

Center coordinates :

$\alpha$  : 12 56 17.75

$\delta$  : -29 34 50.4

Plate reference :

Origin : PanSTARRS-DR1

Color coding :

z band ●

(z+g)/2 ●

g band ●

Error:

R90 : 4.5 arsec

XMM SSC

Jul 3 13:38:22 2020