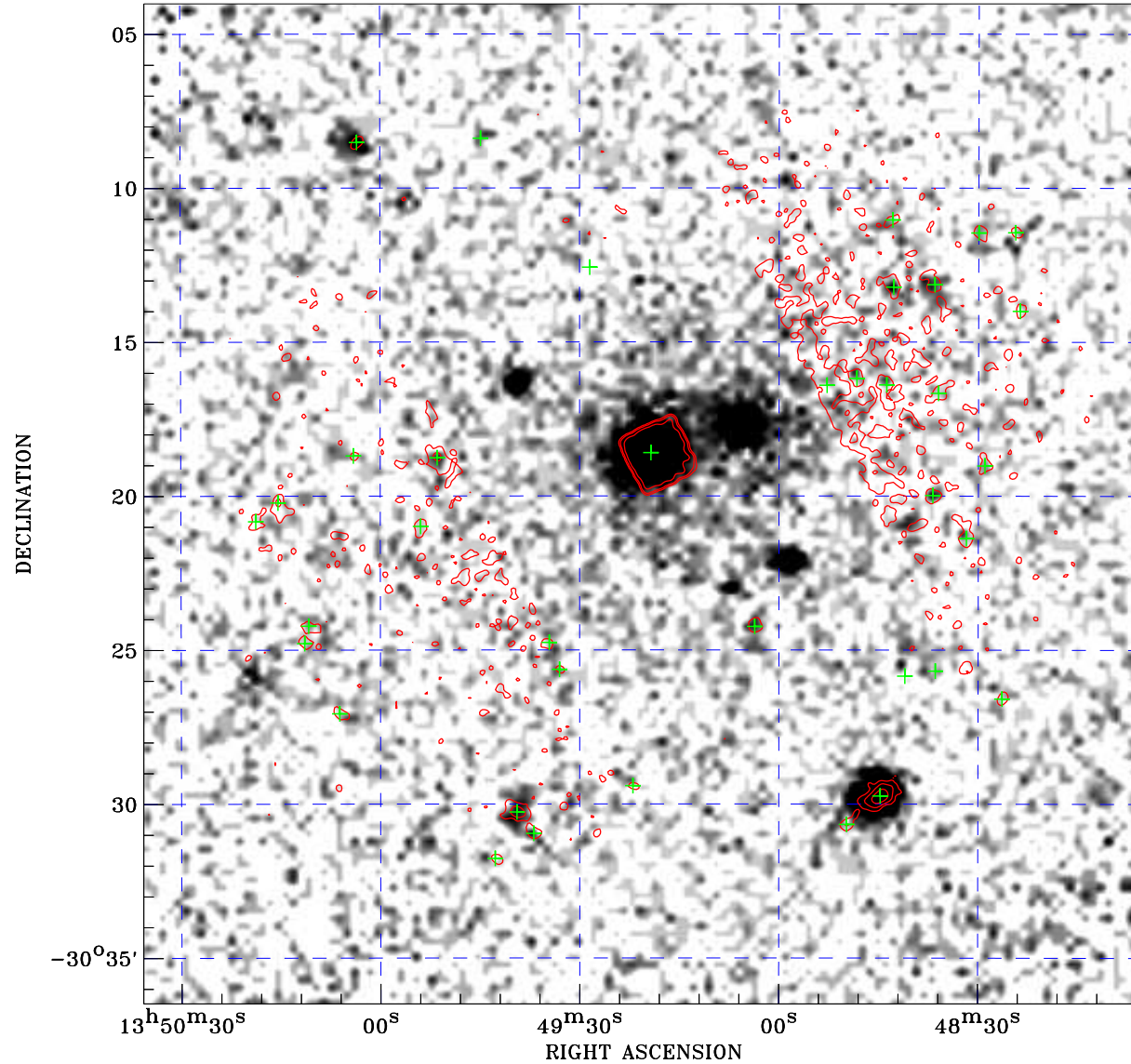


# PDF XMM ROSAT image ACDS V10.0



ROSAT image gray scale (Log) :

$\langle 7.776\text{E-}05$   $\rangle 6.419\text{E-}04$

(counts s<sup>-1</sup>)

⊙ Epic image contour  
levels at 2, 7 and 30 $\sigma$

+ Detected Epic sources

Principal Investigator :  
Dr Claudio Ricci

XMM target name :  
IC4329A

Observation ID :  
0862090401

Epic image :  
 $\alpha$  : 13 49 20.34  
 $\delta$  : -30 20 15.6  
Energy band : 0.2-12.0 keV  
MOS1 : 18527 s  
MOS2 : 18257 s  
PN : 0 s

Contour levels (counts) :  
2 $\sigma$  :1.010E+00 7 $\sigma$  :2.549E+00  
30 $\sigma$  :9.631E+00

Nearest ROSAT image  
from Epic image center :  
Observation : 700907p  
Instrument : PSPCB  
 $\alpha$  : 13 49 33.13  
 $\delta$  : -30 21 36.2

Other ROSAT images :  
None

XMM SSC  
Aug 23 12:25:28 2021