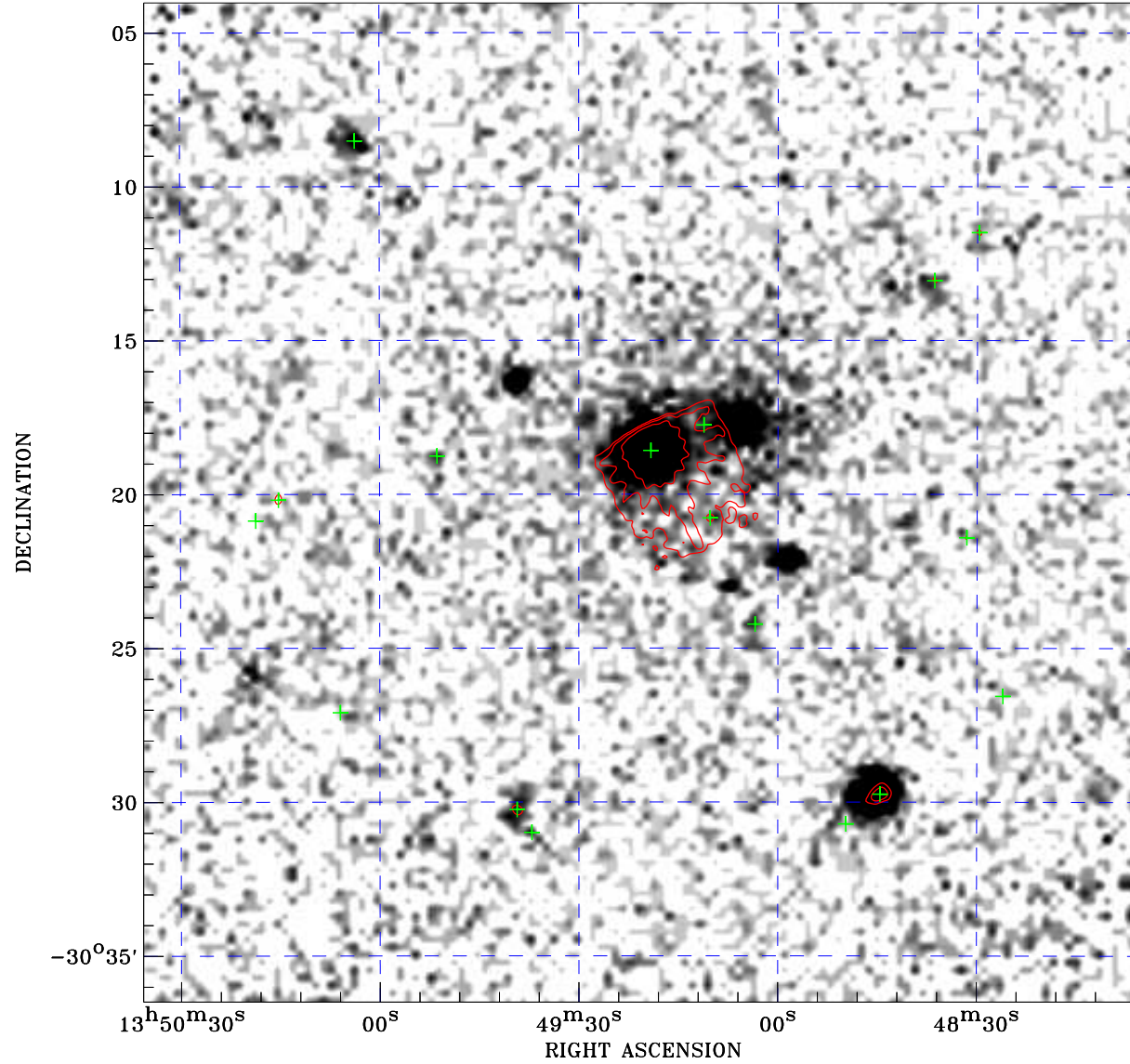



PDF XMM ROSAT image ACDS V10.0



ROSAT image gray scale (Log) :

 $\langle 7.772\text{E}-05$ $\rangle 6.414\text{E}-04$
 (counts s⁻¹)

⊙ Epic image contour
 levels at 2, 7 and 30 σ

+ Detected Epic sources

Principal Investigator :
 Dr Claudio Ricci

XMM target name :
 IC4329A

Observation ID :
 0862090601

Epic image :
 α : 13 49 20.29
 δ : -30 20 16.3
 Energy band : 0.2–12.0 keV
 MOS1 : 9265 s
 MOS2 : 7984 s
 PN : 10640 s

Contour levels (counts) :
 2 σ :1.377E+00 7 σ :4.387E+00
 30 σ :1.823E+01

Nearest ROSAT image
 from Epic image center :
 Observation : 700907p
 Instrument : PSPCB
 α : 13 49 33.13
 δ : -30 21 36.2

Other ROSAT images :
 None

XMM SSC
 Aug 25 20:16:25 2021