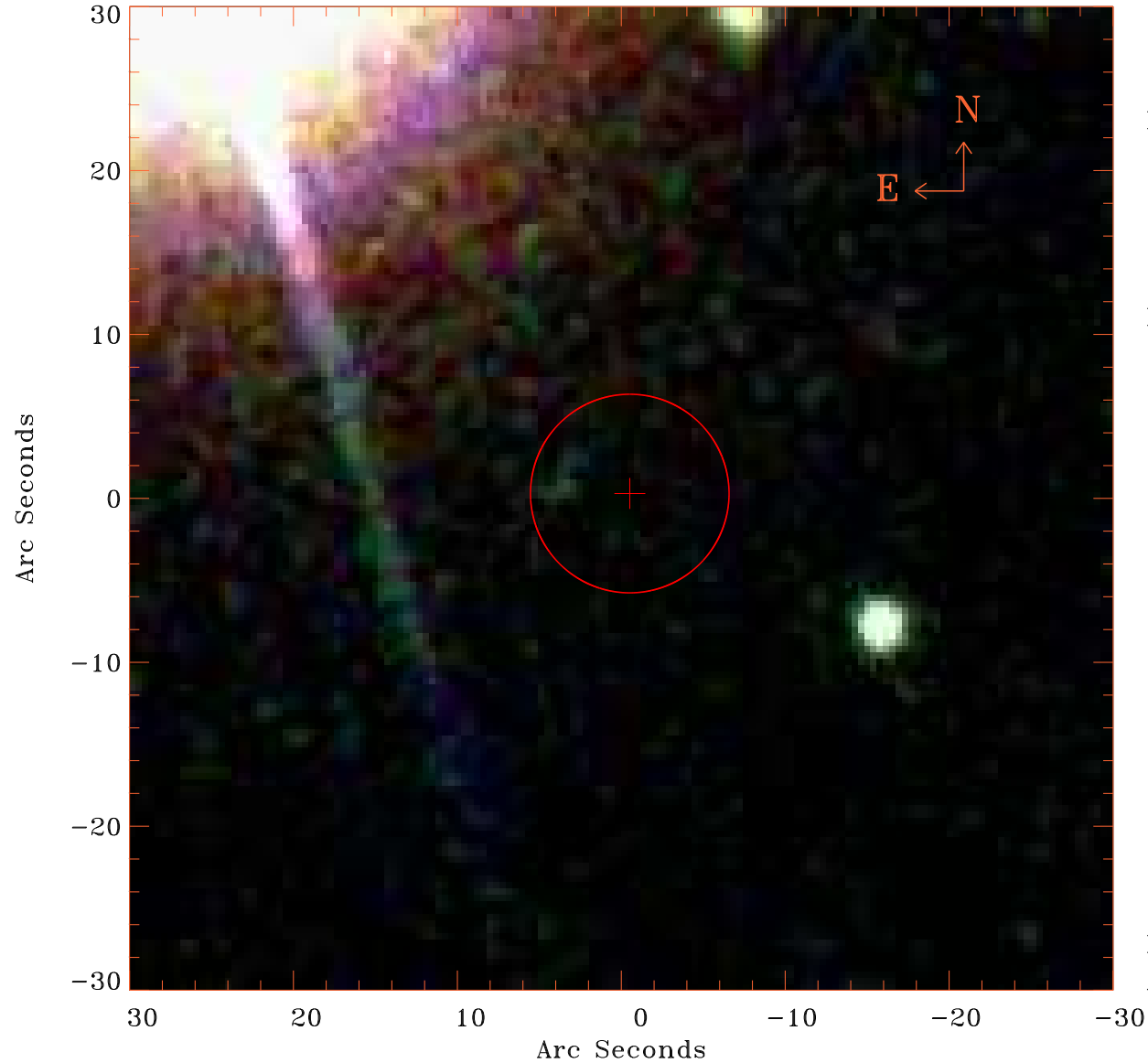


EPIC source finding chart V10.0



Principal Investigator :

Dr Alejandro Nunez

XMM target name :

2M J08393203+203920

OBS ID : 863710201

Source number : 98

X-ray coordinates :

α : 08 40 20.99

δ : +20 48 52.5

Center coordinates :

α : 08 40 21.00

δ : +20 48 52.6

Plate reference :

Origin : SDSS

Color coding :

i band ●

r band ●

g band ●

Error circle :

R_{90} (") : 6.0

XMM SSC

Apr 29 22:50:33 2021