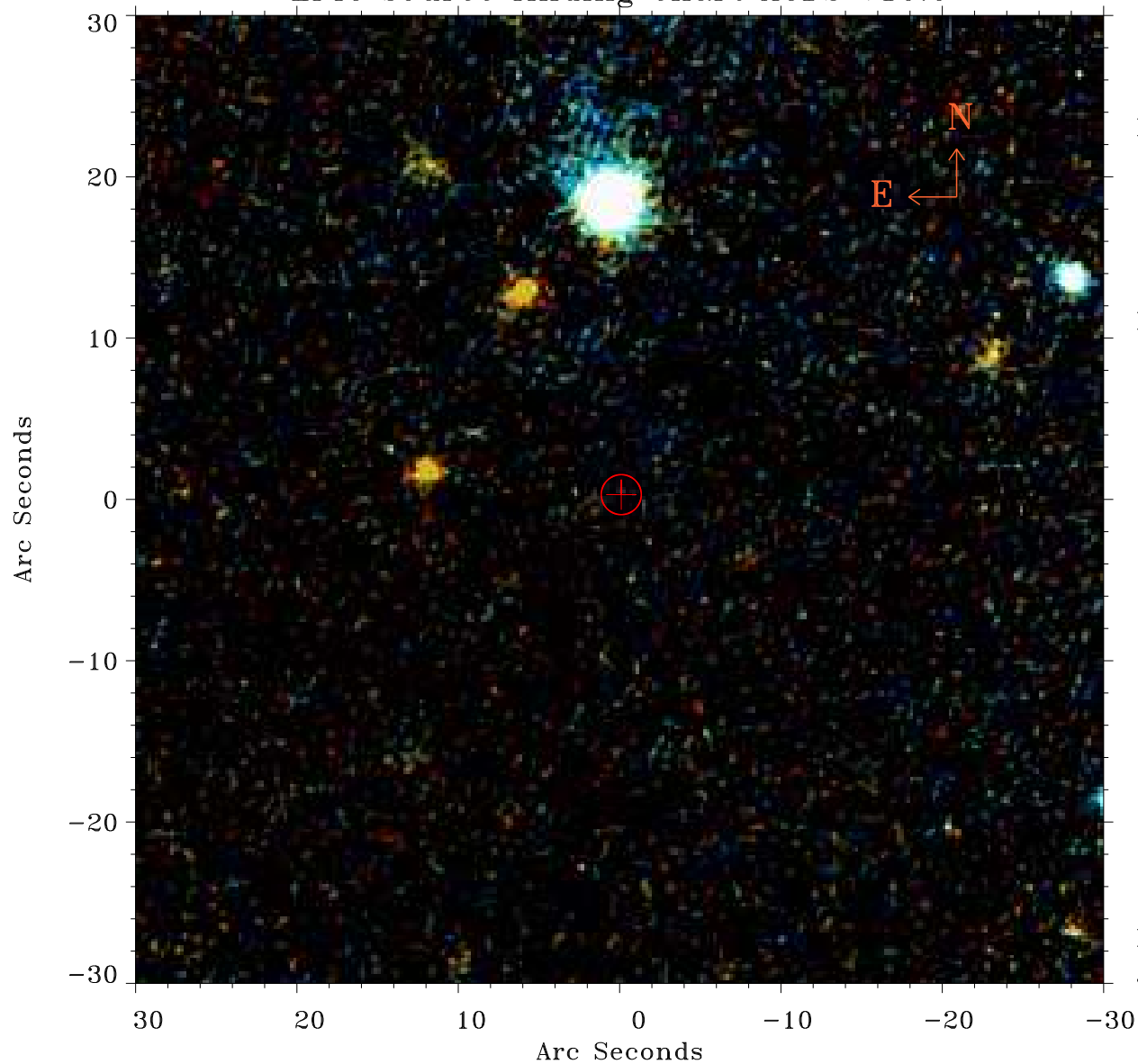


# EPIC source finding chart ACDS V10.0



Principal Investigator :

Prof Yuanyuan Su

XMM target name :

Virgo CF S

OBS ID : 863810101

Source number : 16

X-ray coordinates :

$\alpha$  : 12 30 13.62

$\delta$  : +11 27 09.4

Center coordinates :

$\alpha$  : 12 30 13.61

$\delta$  : +11 27 09.3

Plate reference :

Origin : PanSTARRS-DR1

Color coding :

z band ●

(z+g)/2 ●

g band ●

Error:

R90 : 1.2 arsec

XMM SSC

Jul 20 10:30:52 2020