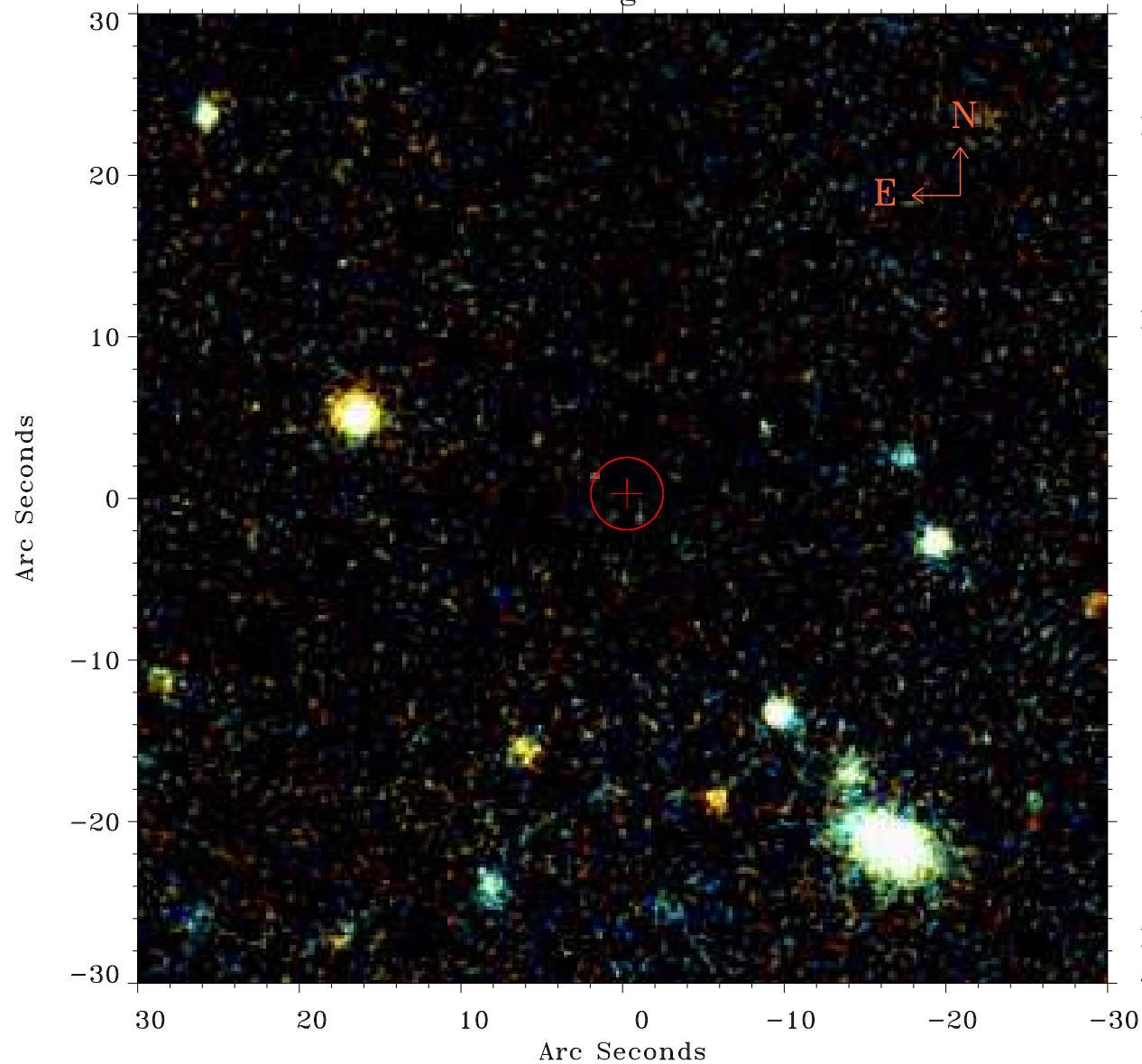


# EPIC source finding chart ACDS V10.0



Principal Investigator :

Prof Yuanyuan Su

XMM target name :

Virgo CF S

OBS ID : 863810101

Source number : 58

X-ray coordinates :

$\alpha$  : 12 30 14.53

$\delta$  : +11 37 37.7

Center coordinates :

$\alpha$  : 12 30 14.54

$\delta$  : +11 37 37.6

Plate reference :

Origin : PanSTARRS-DR1

Color coding :

z band ●

(z+g)/2 ●

g band ●

Error:

R90 : 2.2 arcsec

XMM SSC

Jul 20 10:31:00 2020