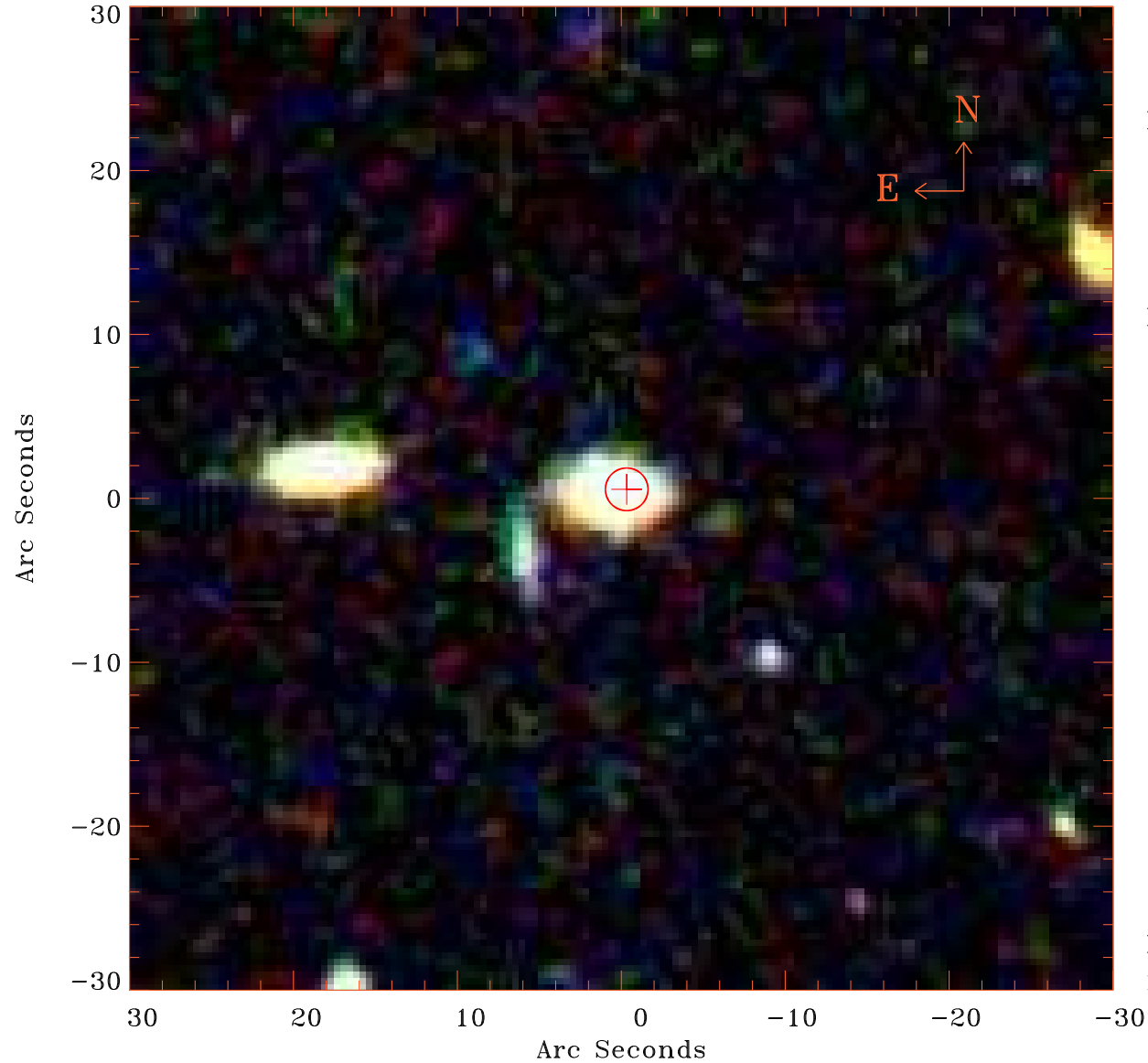


# EPIC source finding chart V10.0



Principal Investigator :

Dr Igor Chilingarian

XMM target name :

SDSS J1329+56

OBS ID : 864090301

Source number : 7

X-ray coordinates :

$\alpha$  : 13 29 02.28

$\delta$  : +55 58 17.9

Center coordinates :

$\alpha$  : 13 29 02.27

$\delta$  : +55 58 17.7

Plate reference :

Origin : SDSS

Color coding :

i band ●

r band ●

g band ●

Error circle :

$R_{90}$  (") : 1.3

XMM SSC

Nov 23 15:20:35 2020