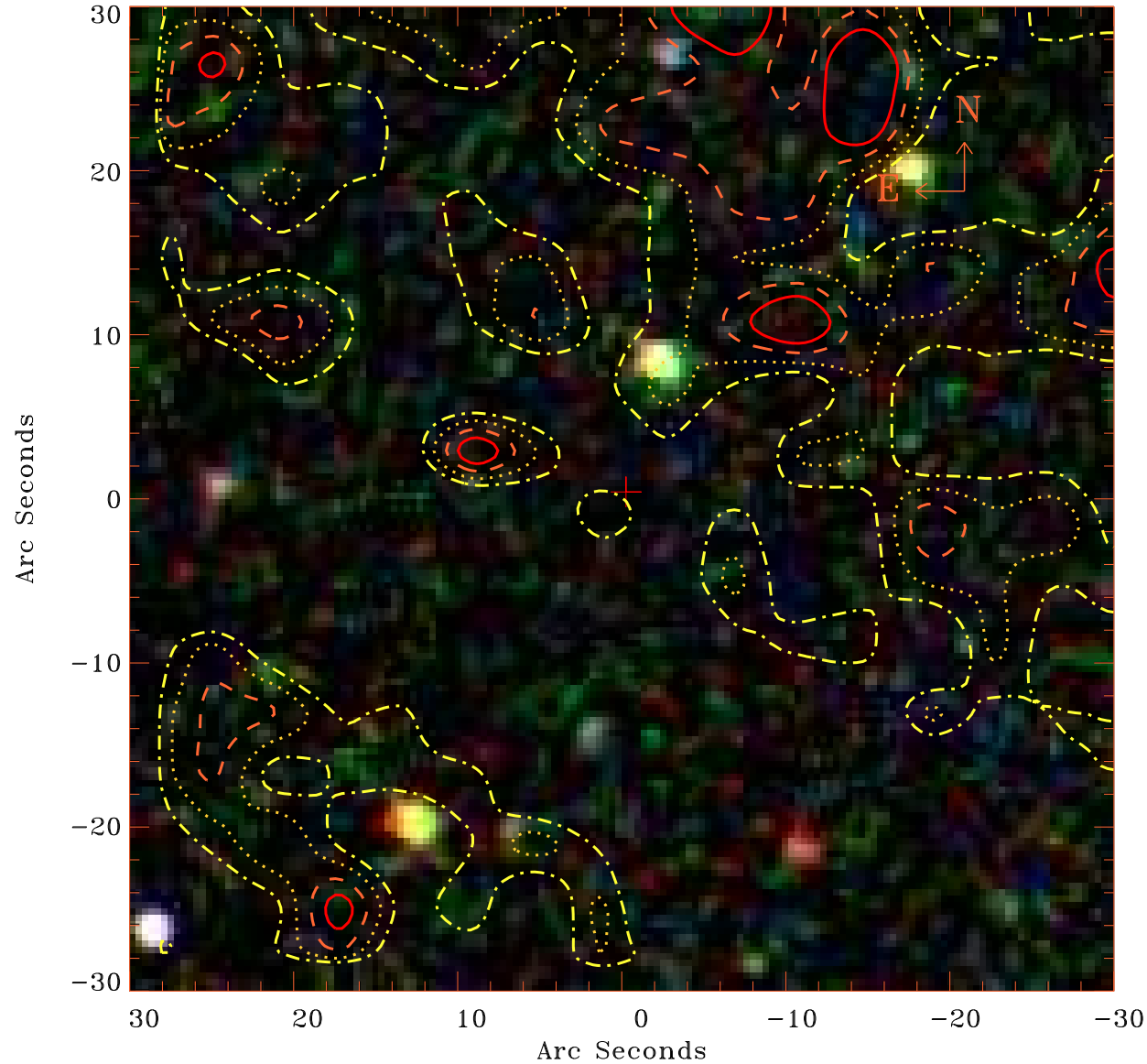


EPIC source finding chart V10.0



Principal Investigator :

Dr Igor Chilingarian

XMM target name :

SDSS J1329+56

OBS ID : 864090301

Source number : 11

X-ray coordinates :

α : 13 27 45.18

δ : +56 05 38.6

Center coordinates :

α : 13 27 45.16

δ : +56 05 38.6

Plate reference :

Origin : SDSS

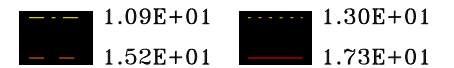
Color coding :

i band ●

r band ●

g band ●

Contour levels (counts) :



XMM SSC

Nov 23 15:20:32 2020