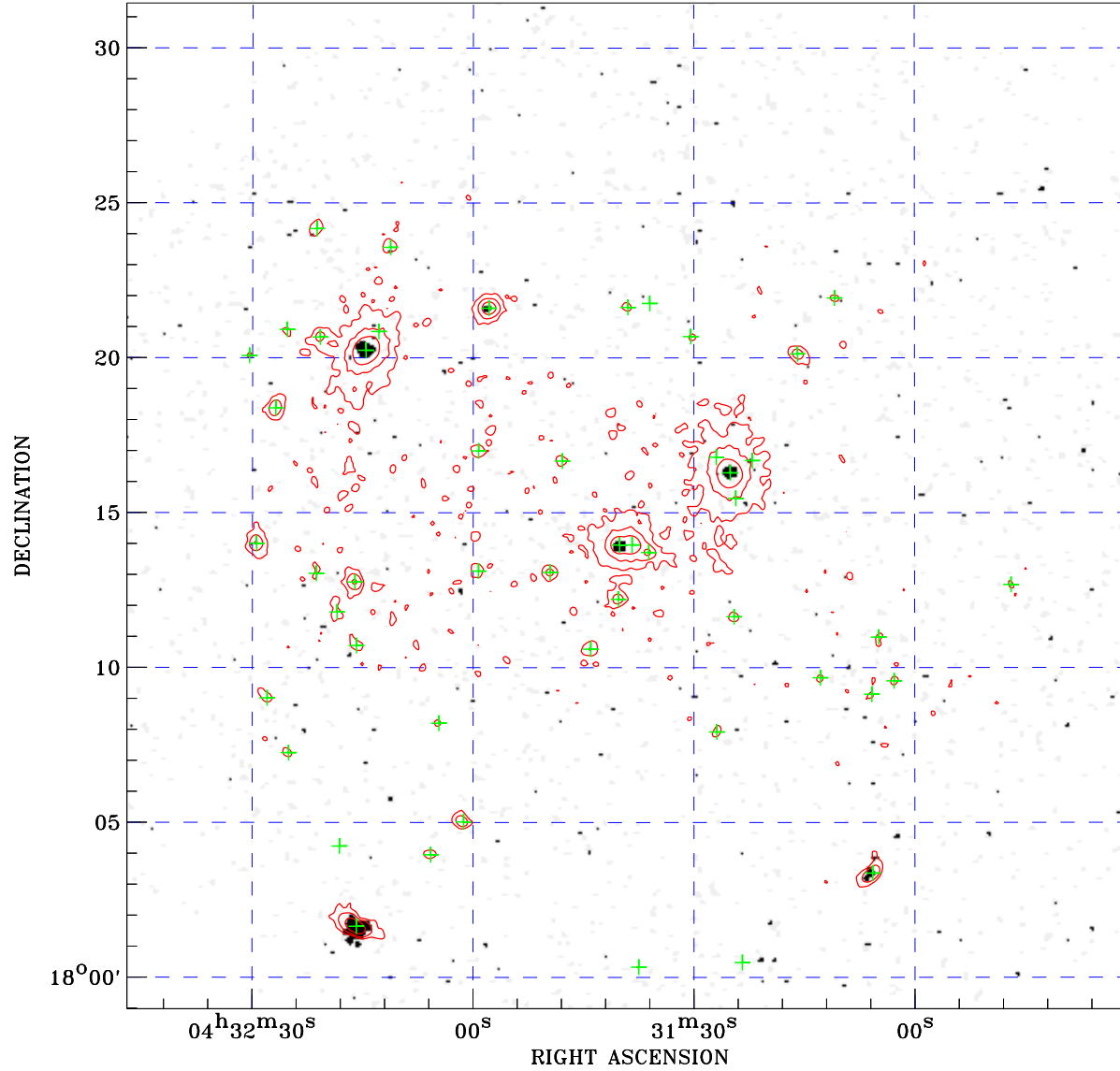



# PDF XMM ROSAT image ACDS V10.0



ROSAT image gray scale (Log) :  
  
 < 1.872E-04 > 3.971E-04  
 (counts s<sup>-1</sup>)

⊙ Epic image contour  
 levels at 2, 7 and 30 $\sigma$

+ Detected Epic sources

Principal Investigator :  
 Dr Christian Schneider

XMM target name :  
 Field 1

Observation ID :  
 0865040201

Epic image :  
 $\alpha$  : 04 31 38.70  
 $\delta$  : +18 15 13.5  
 Energy band : 0.2–12.0 keV  
 MOS1 : 25246 s  
 MOS2 : 27882 s  
 PN : 17706 s

Contour levels (counts) :  
 2 $\sigma$  :2.507E+00 7 $\sigma$  :5.678E+00  
 30 $\sigma$  :2.026E+01

Nearest ROSAT image  
 from Epic image center :  
 Observation : 201090h  
 Instrument : HRI  
 $\alpha$  : 04 31 45.12  
 $\delta$  : +18 12 11.7

Other ROSAT images :  
 None

XMM SSC  
 Aug 25 16:26:38 2020