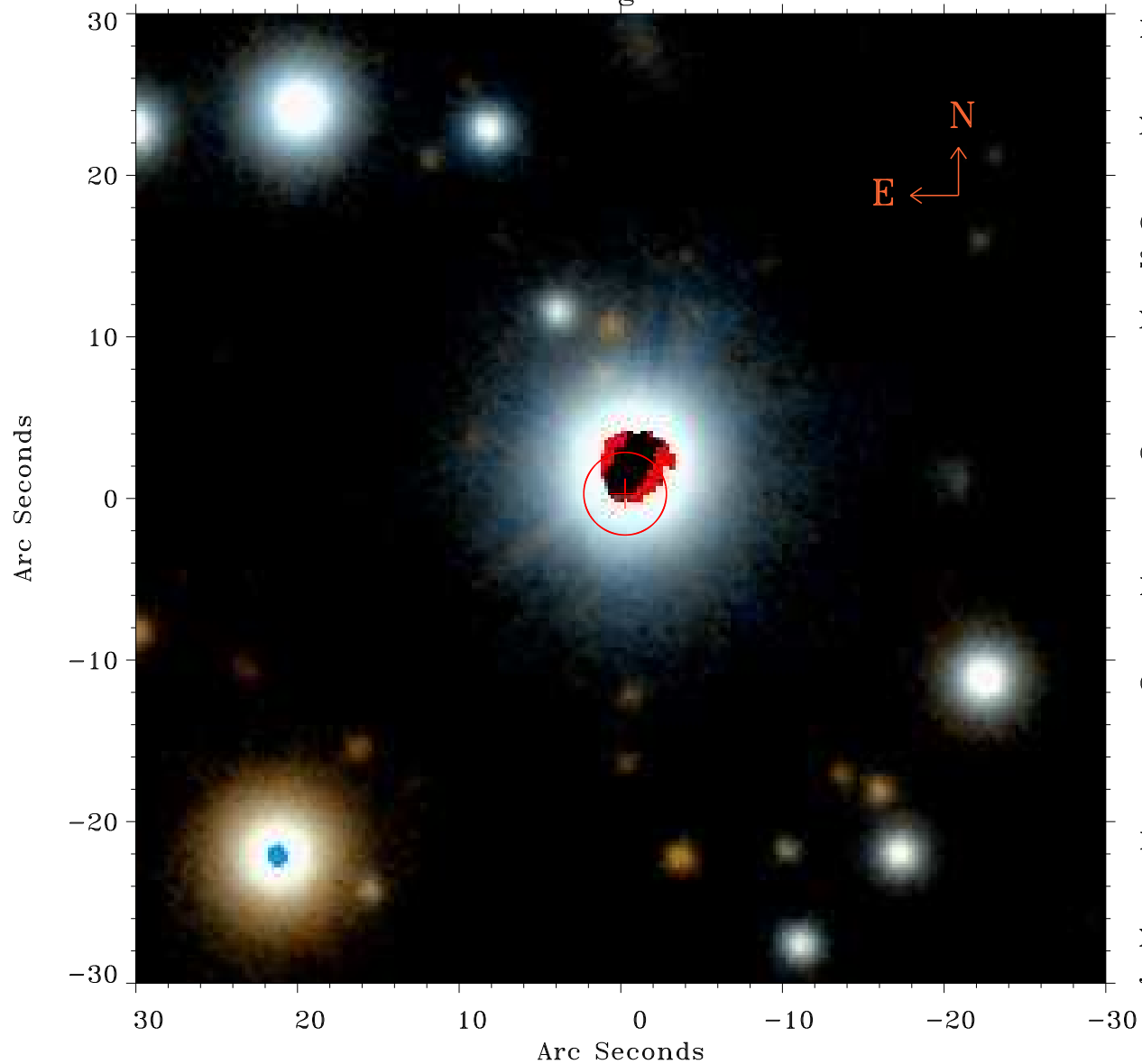


# EPIC source finding chart ACDS V10.0



Principal Investigator :  
Dr NORBERT SCHARTEL (PS)

XMM target name :  
ASASSN-16le

OBS ID : 871191001  
Source number : 15

X-ray coordinates :  
 $\alpha$  : 23 33 32.12  
 $\delta$  : +54 37 56.7

Center coordinates :  
 $\alpha$  : 23 33 32.12  
 $\delta$  : +54 37 56.6

Plate reference :  
Origin : PanSTARRS-DR1

Color coding :  
z band ●  
(z+g)/2 ●  
g band ●

Error:  
R90 : 2.5 arsec

XMM SSC  
Jun 25 15:13:09 2020