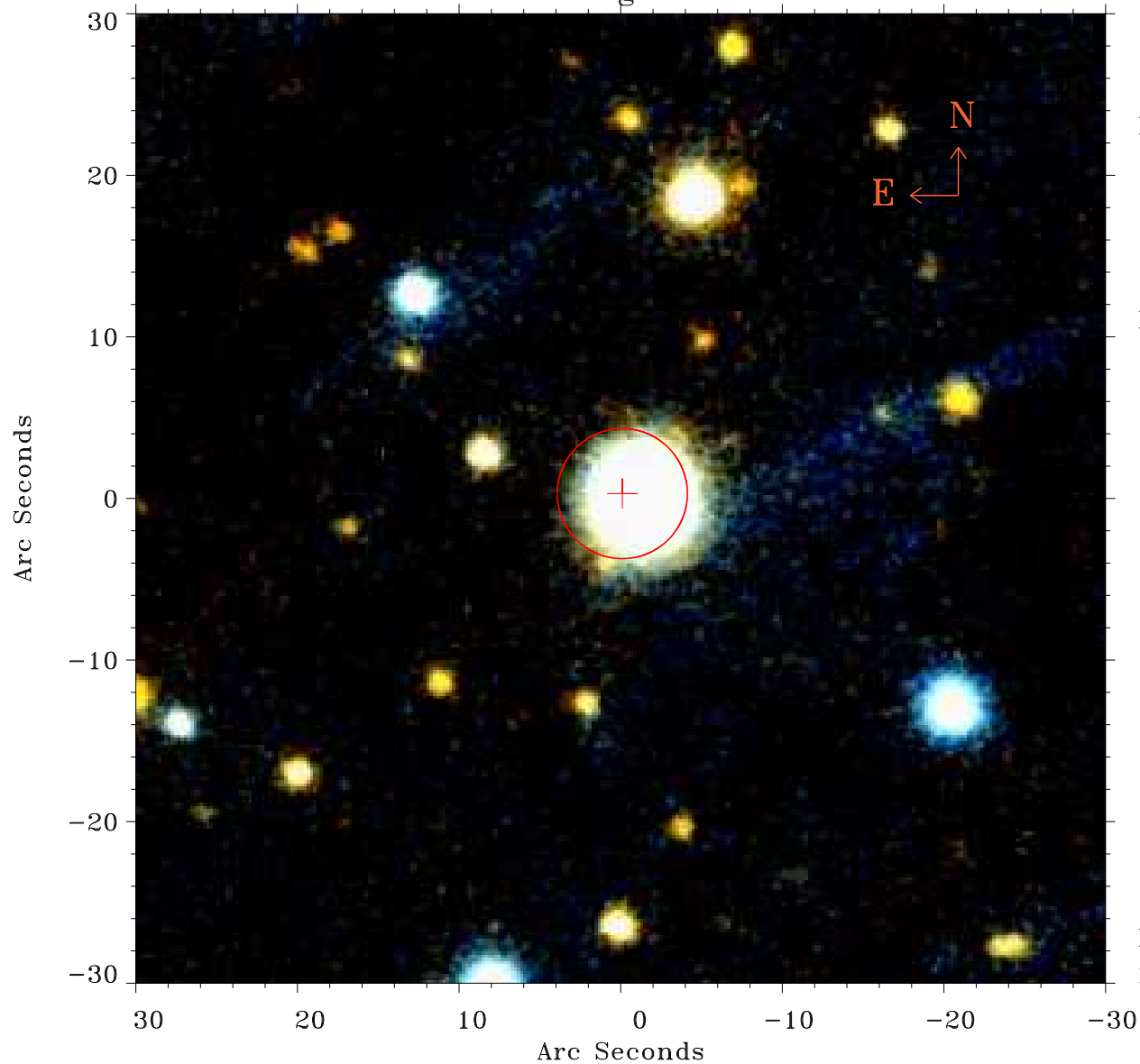


# EPIC source finding chart ACDS V10.0



Principal Investigator :

Dr Yael Naze

XMM target name :

HD60855

OBS ID : 880030301

Source number : 28

X-ray coordinates :

$\alpha$  : 07 36 37.77

$\delta$  : -14 38 18.6

Center coordinates :

$\alpha$  : 07 36 37.76

$\delta$  : -14 38 18.7

Plate reference :

Origin : PanSTARRS-DR1

Color coding :

z band ●

(z+g)/2 ●

g band ●

Error:

R90 : 4.0 arsec

XMM SSC

Nov 2 12:57:36 2021