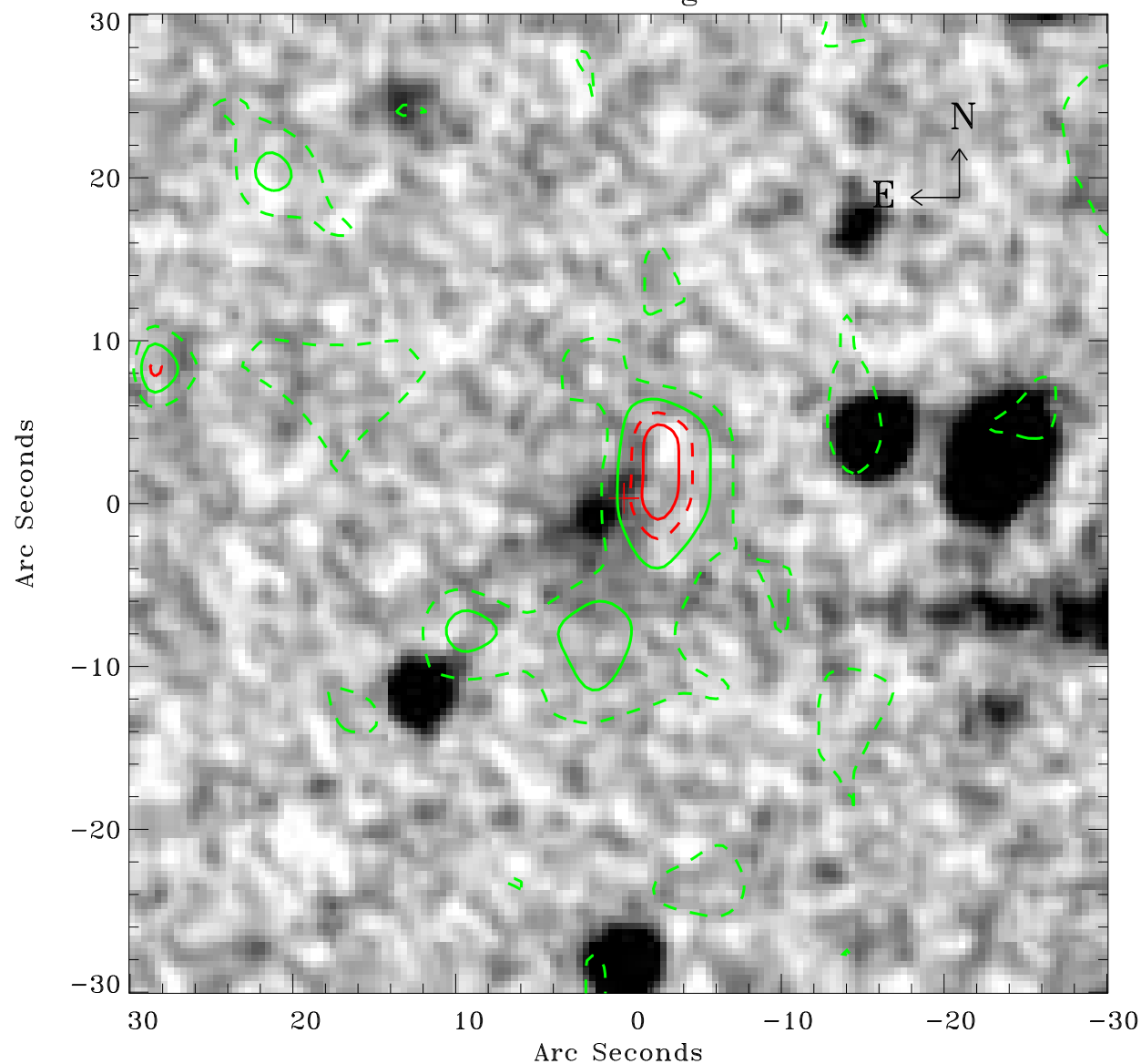


EPIC source finding chart V10



Principal Investigator :

Dr Nora Loiseau

XMM target name :

2MASX J06130705-492

OBS ID : 881680201

Source number : 30

X-ray coordinates :

α : 06 12 44.13

δ : -49 30 26.5

Center coordinates :

α : 06 12 44.13

δ : -49 30 26.4

Plate reference :

Origin : CDS HIPs Network

Plate : MAMA srcj

Pixel : 0.40 "/pix

Contour levels (counts) :

1.99E+00 3.19E+00

4.24E+00 5.10E+00

XMM SSC

Nov 15 13:54:56 2021