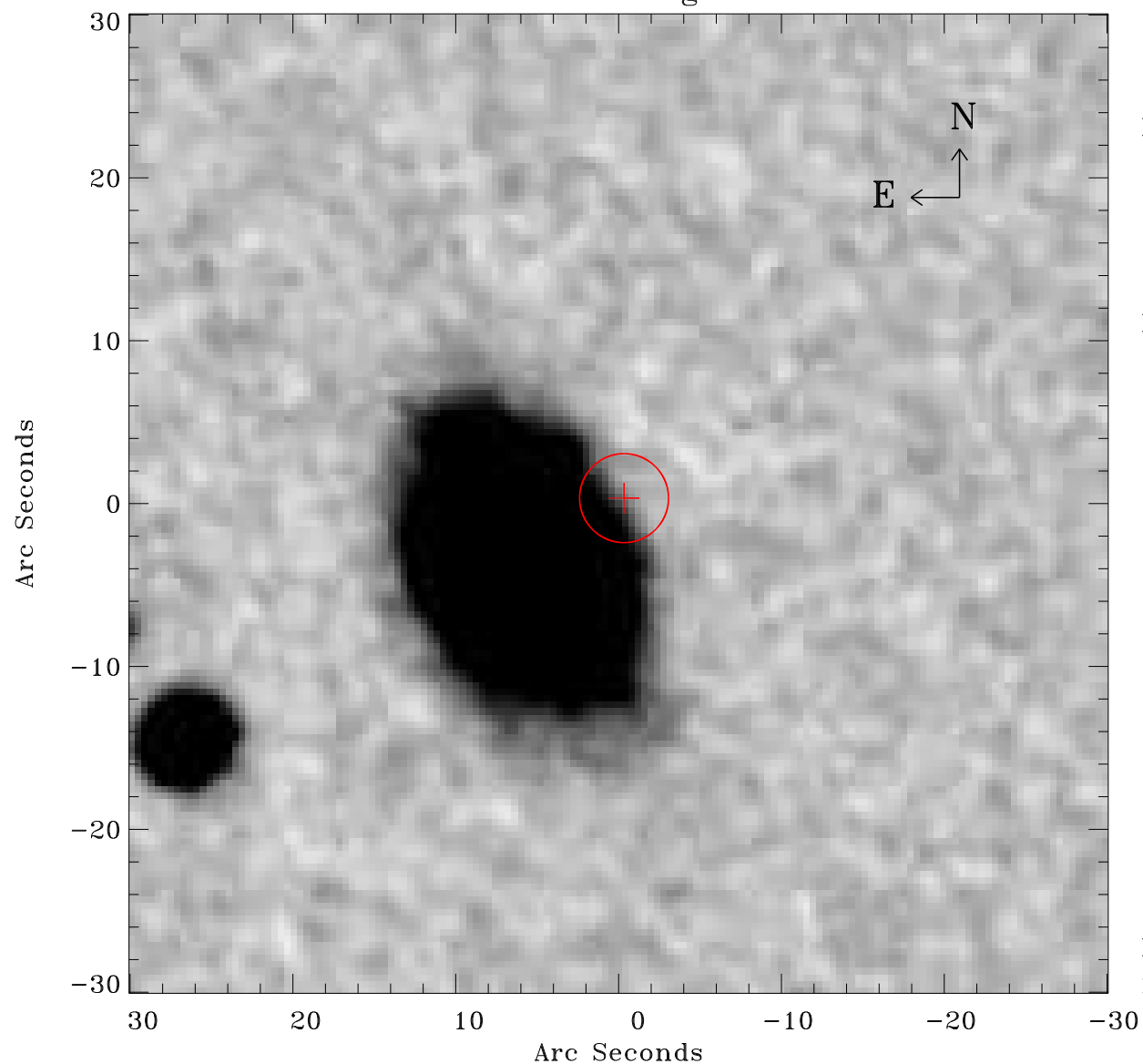


# EPIC source finding chart V10



Principal Investigator :

Dr Nora Loiseau

XMM target name :

2MASX J06130705-492

OBS ID : 881680201

Source number : 45

X-ray coordinates :

$\alpha$  : 06 12 58.67

$\delta$  : -49 19 28.4

Center coordinates :

$\alpha$  : 06 12 58.66

$\delta$  : -49 19 28.3

Plate reference :

Origin : CDS HIPs Network

Plate : MAMA srcj

Pixel : 0.40 "/pix

Error circle :

$R_{90}$  (") : 2.7

XMM SSC

Nov 15 13:55:08 2021