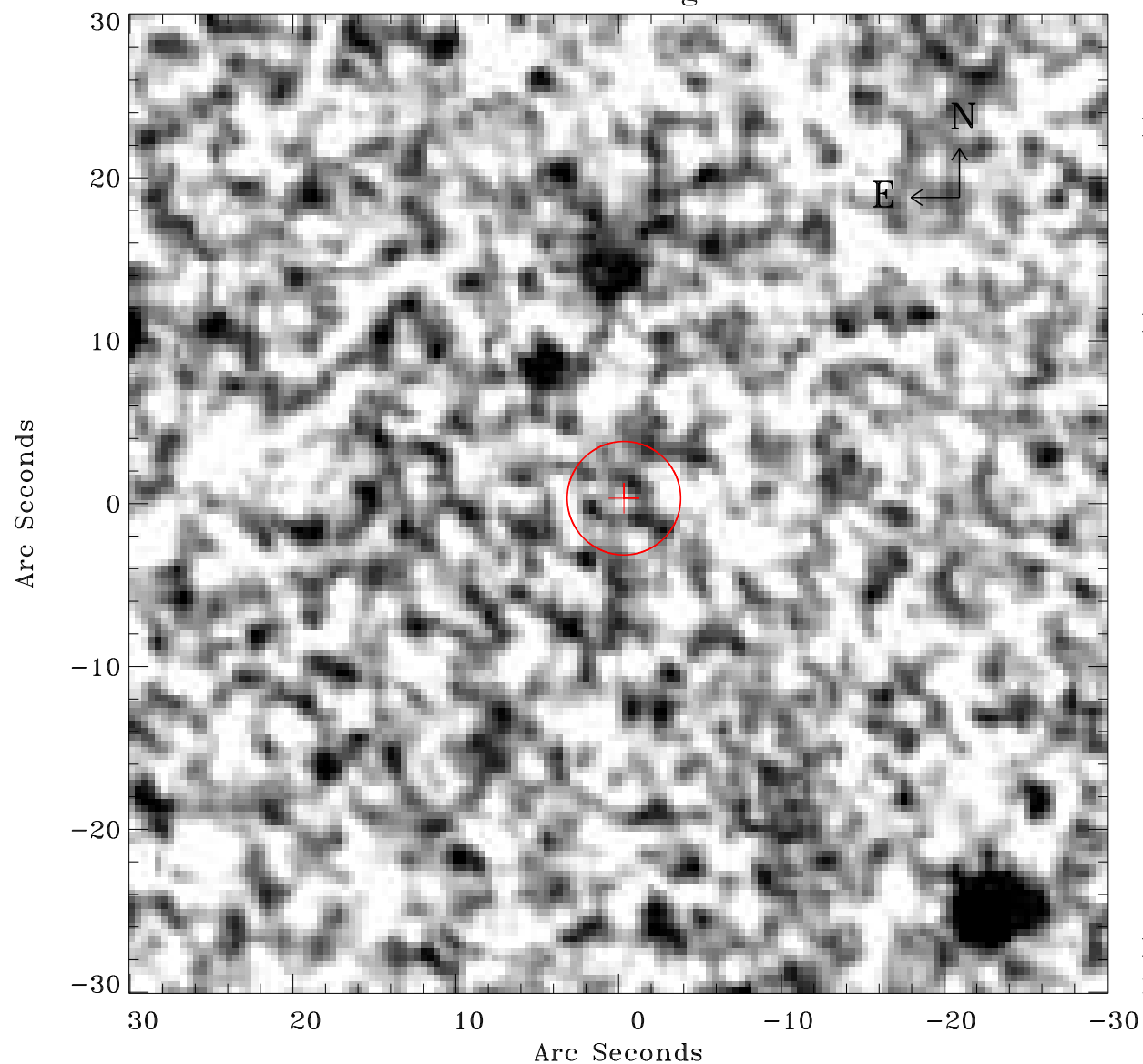


# EPIC source finding chart V10



Principal Investigator :

Dr Nora Loiseau

XMM target name :

2MASX J06130705-492

OBS ID : 881680201

Source number : 60

X-ray coordinates :

$\alpha$  : 06 12 57.18

$\delta$  : -49 17 34.8

Center coordinates :

$\alpha$  : 06 12 57.17

$\delta$  : -49 17 34.7

Plate reference :

Origin : CDS HIPs Network

Plate : MAMA srcj

Pixel : 0.40 "/pix

Error circle :

$R_{90}$  (") : 3.5

XMM SSC

Nov 15 13:55:07 2021