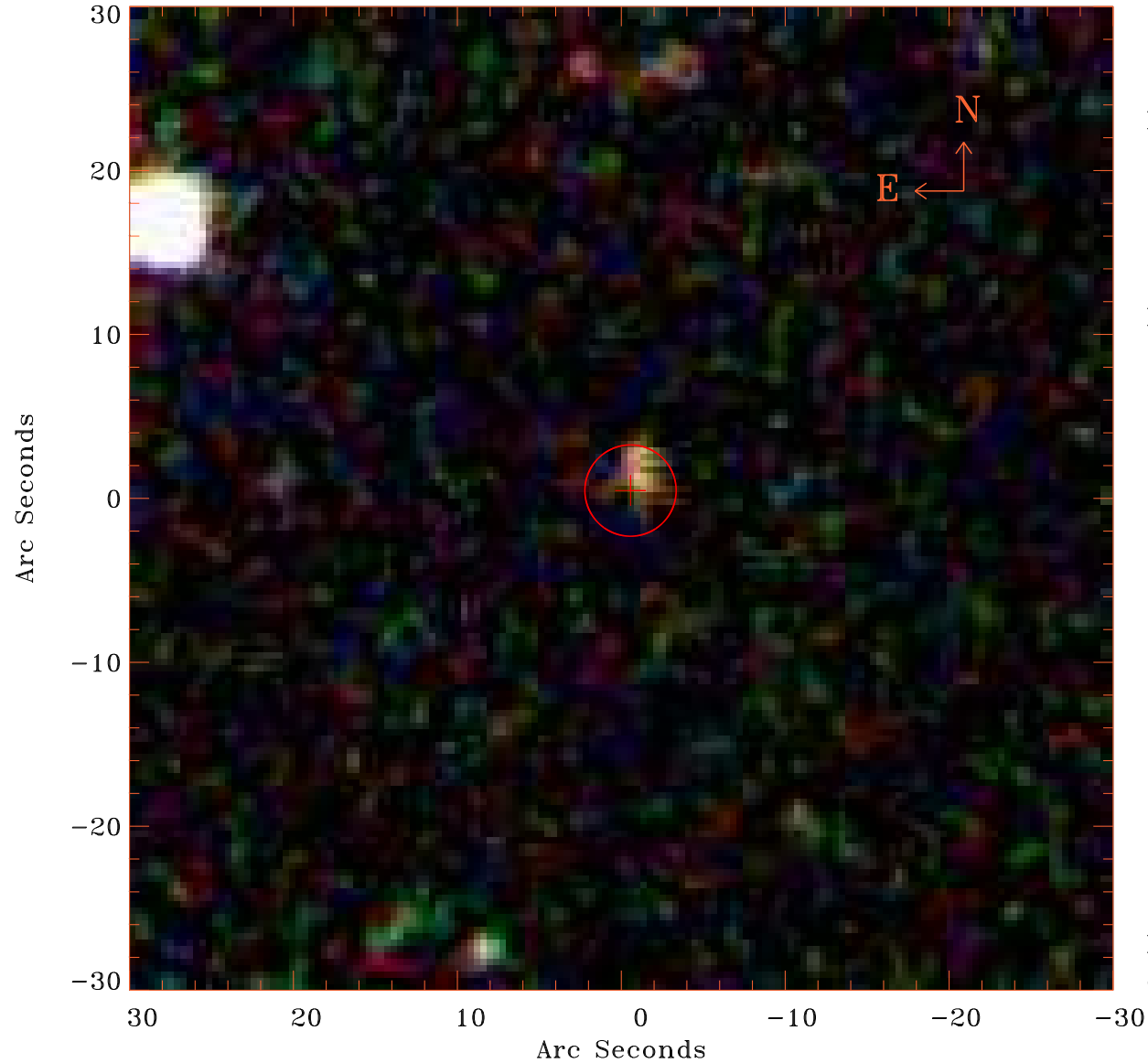


EPIC source finding chart V10.0



Principal Investigator :

Ms Claire Greenwell

XMM target name :

SDSS J075139.06+402

OBS ID : 884080101

Source number : 29

X-ray coordinates :

α : 07 51 52.61

δ : +40 15 28.7

Center coordinates :

α : 07 51 52.62

δ : +40 15 28.6

Plate reference :

Origin : SDSS

Color coding :

i band ●

r band ●

g band ●

Error circle :

R_{90} (") : 2.8

XMM SSC

Oct 1 18:15:08 2021