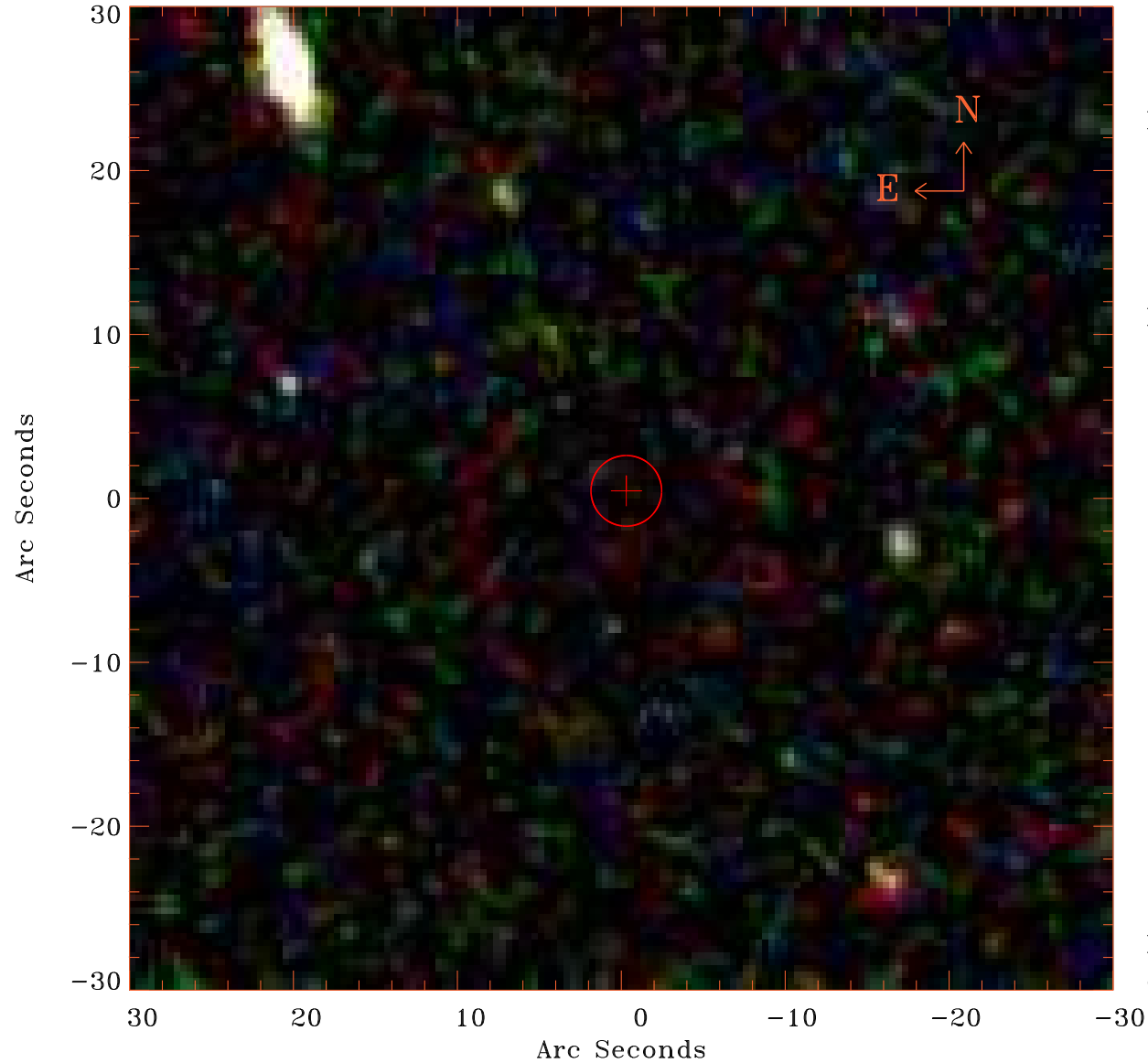


# EPIC source finding chart V10.0



Principal Investigator :

Ms Claire Greenwell

XMM target name :

SDSS J075139.06+402

OBS ID : 884080101

Source number : 38

X-ray coordinates :

$\alpha$  : 07 52 09.46

$\delta$  : +40 19 25.7

Center coordinates :

$\alpha$  : 07 52 09.45

$\delta$  : +40 19 25.6

Plate reference :

Origin : SDSS

Color coding :

i band ●

r band ●

g band ●

Error circle :

$R_{90}$  (") : 2.1

XMM SSC

Oct 1 18:15:11 2021