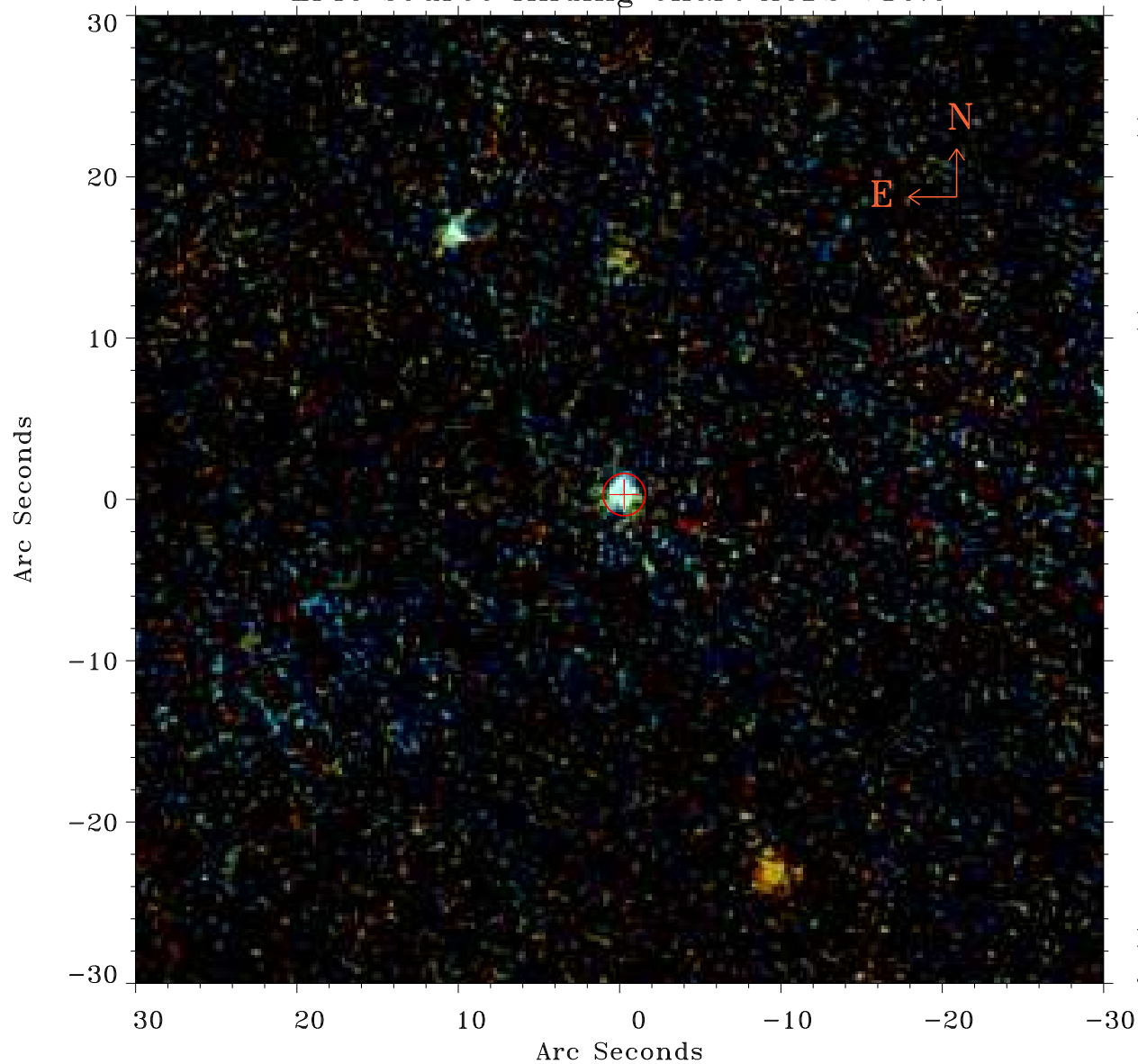


# EPIC source finding chart ACDS V10.0



Principal Investigator :

Dr Taiki Kavamuro

XMM target name :

POX 52

OBS ID : 890430101

Source number : 12

X-ray coordinates :

$\alpha$  : 12 02 20.77

$\delta$  : -20 52 19.0

Center coordinates :

$\alpha$  : 12 02 20.77

$\delta$  : -20 52 19.1

Plate reference :

Origin : PanSTARRS-DR1

Color coding :

z band ●

(z+g)/2 ●

g band ●

Error:

R90 : 1.3 arsec

XMM SSC

Jan 4 20:47:55 2022