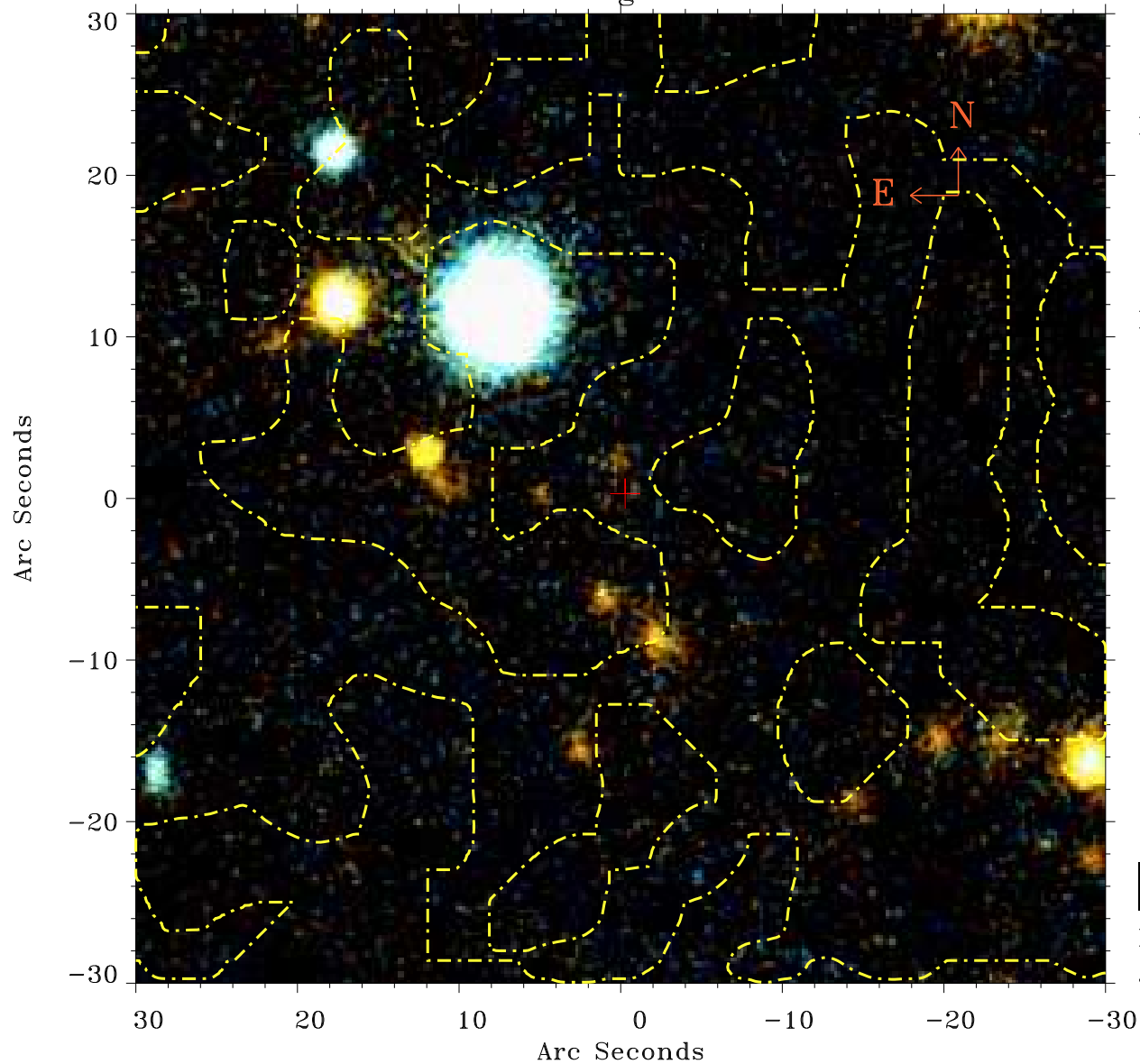


# EPIC source finding chart ACDS V10.0



Principal Investigator :

Dr Taiki Kavamura

XMM target name :

POX 52

OBS ID : 890430101

Source number : 85

X-ray coordinates :

$\alpha$  : 12 03 13.81

$\delta$  : -20 45 45.1

Center coordinates :

$\alpha$  : 12 03 13.82

$\delta$  : -20 45 45.2

Plate reference :

Origin : PanSTARRS-DR1

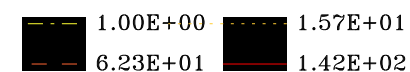
Color coding :

z band ●

(z+g)/2 ●

g band ●

Contour levels (counts) :



XMM SSC

Jan 4 20:50:30 2022