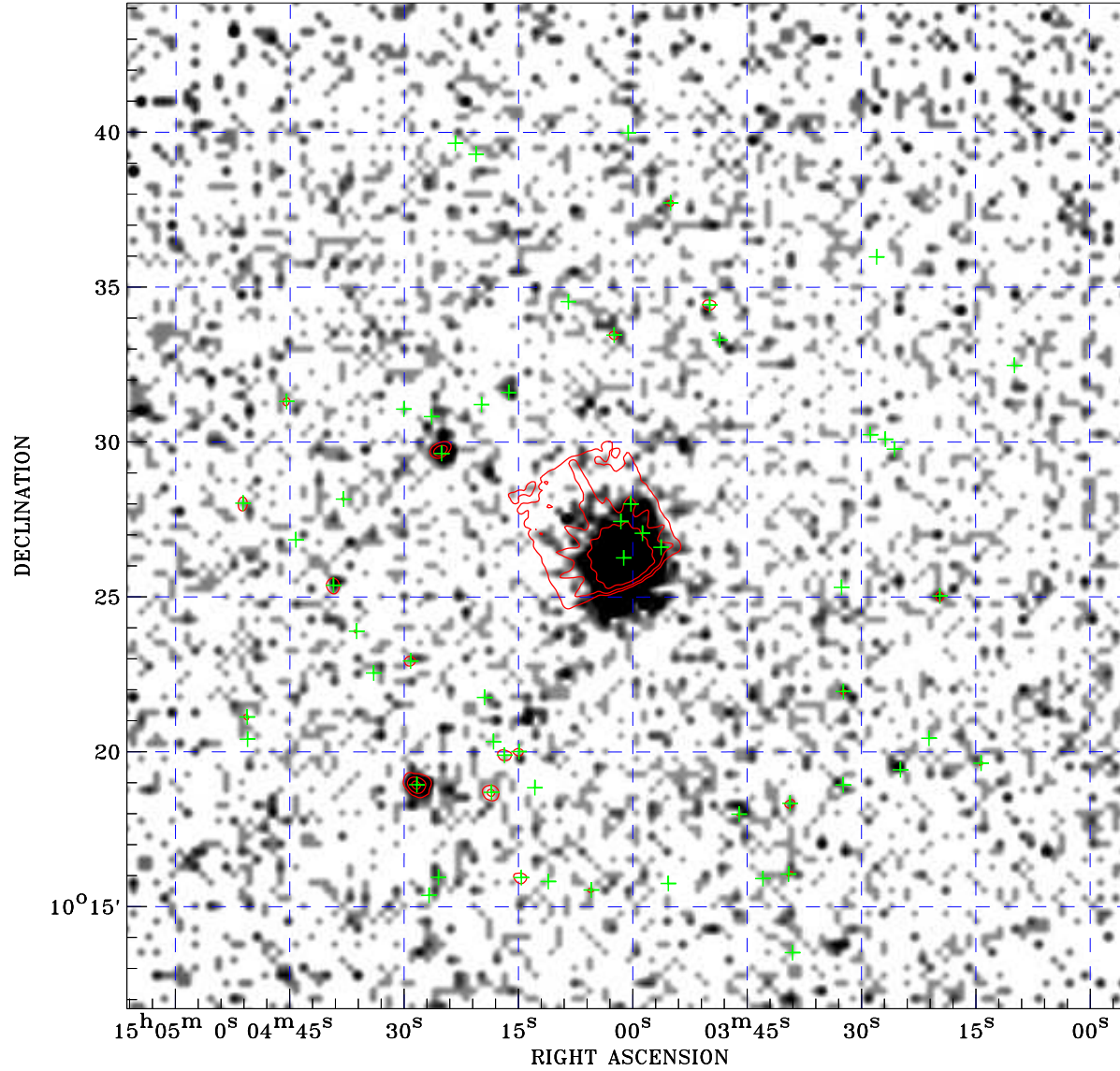



PDF XMM ROSAT image ACDS V10.0



ROSAT image gray scale (Log) :

 $\langle 1.152\text{E-}04$ $\rangle 1.001\text{E-}03$
 (counts s⁻¹)

⊙ Epic image contour
 levels at 2, 7 and 30 σ

+ Detected Epic sources

Principal Investigator :
 Dr Missagh Mehdipour

XMM target name :
 Mrk 841

Observation ID :
 0890640201

Epic image :
 α : 15 04 00.38
 δ : +10 27 56.7
 Energy band : 0.2–12.0 keV
 MOS1 : 51411 s
 MOS2 : 54752 s
 PN : 51104 s

Contour levels (counts) :
 2 σ :5.168E+00 7 σ :1.520E+01
 30 σ 6.133E+01

Nearest ROSAT image
 from Epic image center :
 Observation : 700102p
 Instrument : PSPCB
 α : 15 04 12.22
 δ : +10 23 23.7

Other ROSAT images :
 None

XMM SSC
 Jan 17 15:31:00 2022