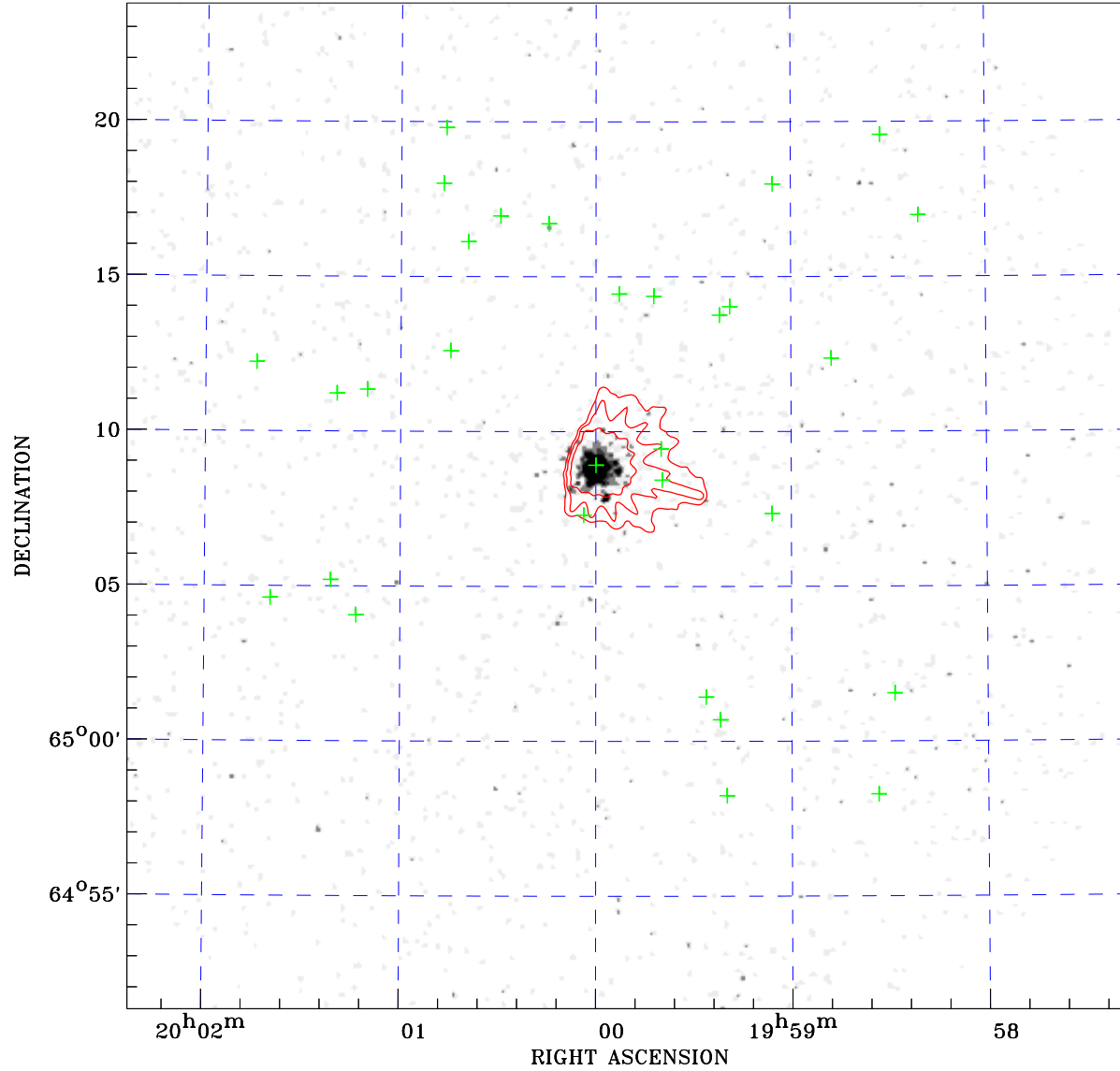



# PDF XMM ROSAT image ACDS V10.0



ROSAT image gray scale (Log) :  
  
 < 3.096E-04 > 1.395E-03  
 (counts s<sup>-1</sup>)

⊙ Epic image contour  
 levels at 2, 7 and 30 $\sigma$

+ Detected Epic sources

Principal Investigator :  
 Dr Daniela Dorner

XMM target name :  
 1ES 1959+650

Observation ID :  
 0890660101

Epic image :  
 $\alpha$  : 19 59 49.55  
 $\delta$  : +65 07 36.4  
 Energy band : 0.2–12.0 keV  
 MOS1 : 22747 s  
 MOS2 : 22669 s  
 PN : 23446 s

Contour levels (counts) :  
 2 $\sigma$  :1.203E+01 7 $\sigma$  :4.095E+01  
 30 $\sigma$  :1.740E+02

Nearest ROSAT image  
 from Epic image center :  
 Observation : 400797h  
 Instrument : HRI  
 $\alpha$  : 20 00 19.97  
 $\delta$  : +65 06 47.7

Other ROSAT images :  
 None

XMM SSC  
 Aug 16 22:11:11 2021