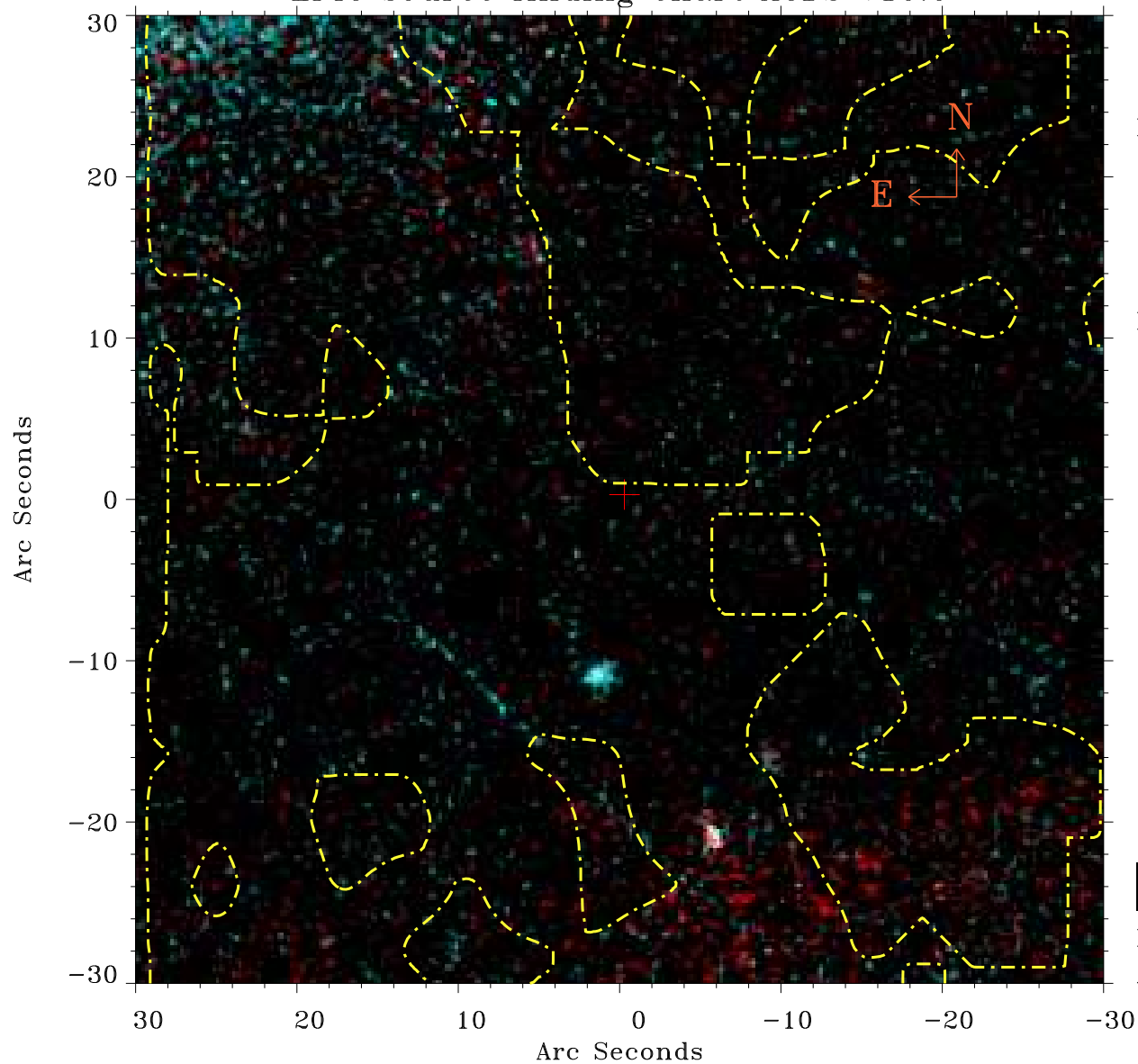


EPIC source finding chart ACDS V10.0



Principal Investigator :

Prof Stephen Walker

XMM target name :

Virgo Far North 1

OBS ID : 900740101

Source number : 105

X-ray coordinates :

α : 12 31 37.49

δ : +16 49 48.3

Center coordinates :

α : 12 31 37.50

δ : +16 49 48.2

Plate reference :

Origin : PanSTARRS-DR1

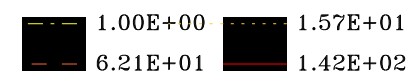
Color coding :

z band ●

(z+g)/2 ●

g band ●

Contour levels (counts) :



XMM SSC

Aug 3 16:33:21 2022