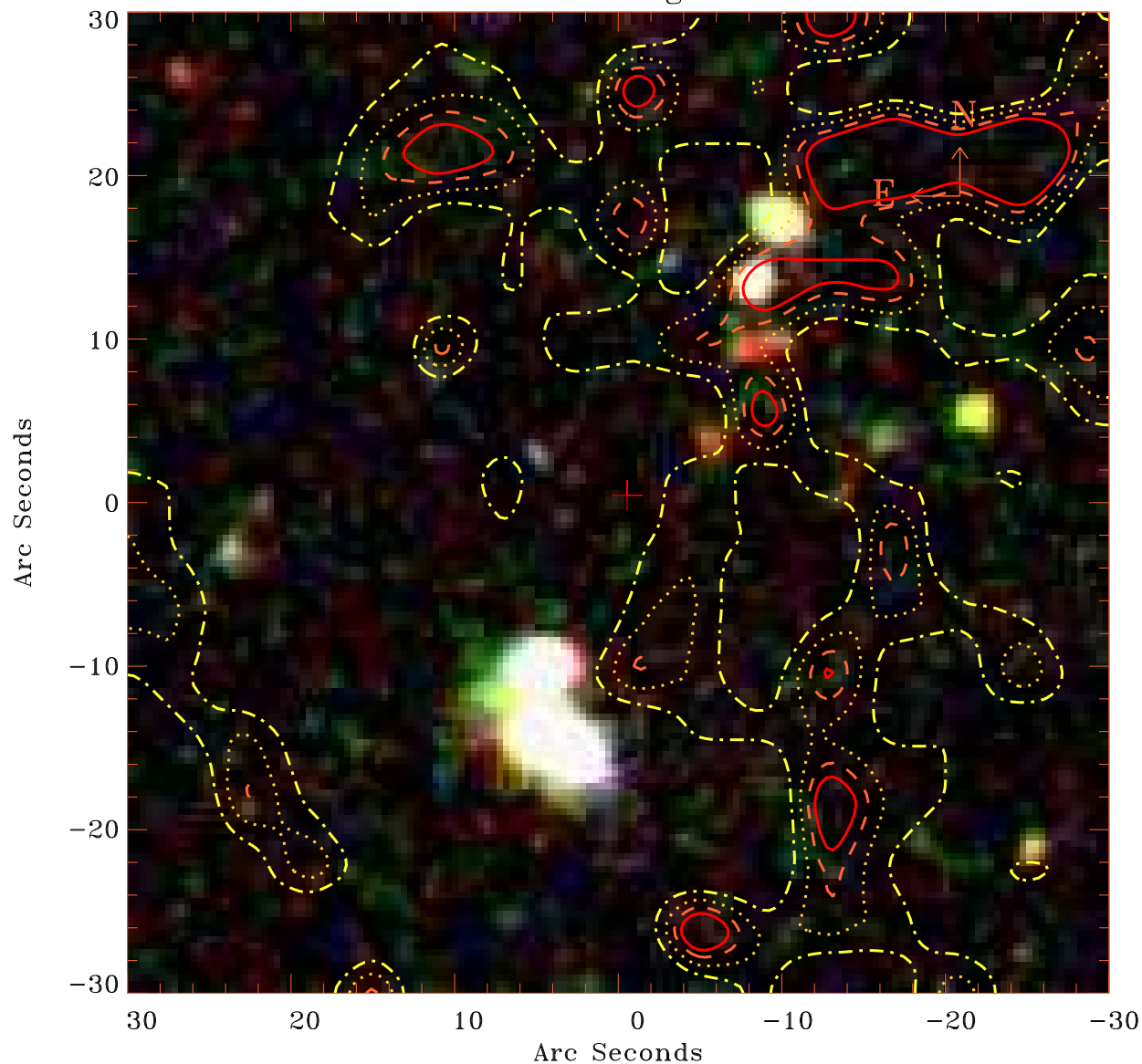


# EPIC source finding chart V10.0



Principal Investigator :

Prof Stephen Walker

XMM target name :

Virgo Far South 2

OBS ID : 900740401

Source number : 85

X-ray coordinates :

$\alpha$  : 12 29 33.49

$\delta$  : +09 17 48.6

Center coordinates :

$\alpha$  : 12 29 33.50

$\delta$  : +09 17 48.5

Plate reference :

Origin : SDSS

Color coding :

i band ●

r band ●

g band ●

Contour levels (counts) :



XMM SSC

Jan 10 15:57:30 2023