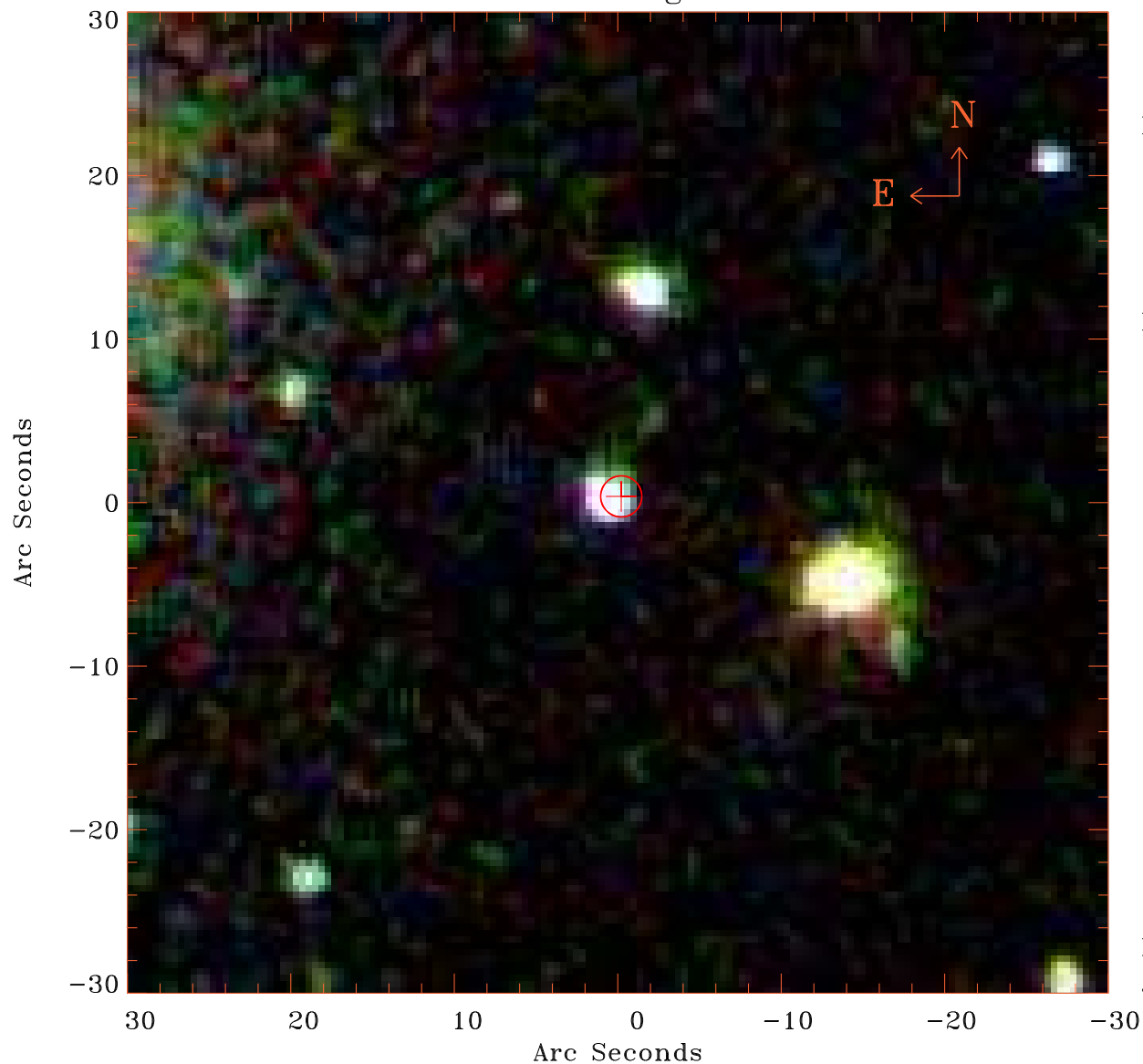


# EPIC source finding chart V10.0



Principal Investigator :

Mr Cameron Pratt

XMM target name :

SZ15

OBS ID : 902750801

Source number : 4

X-ray coordinates :

$\alpha$  : 12 15 40.47

$\delta$  : +17 08 56.7

Center coordinates :

$\alpha$  : 12 15 40.45

$\delta$  : +17 08 56.7

Plate reference :

Origin : SDSS

Color coding :

i band ●

r band ●

g band ●

Error circle :

$R_{90}$  (") : 1.2

XMM SSC

Jun 2 16:46:48 2022