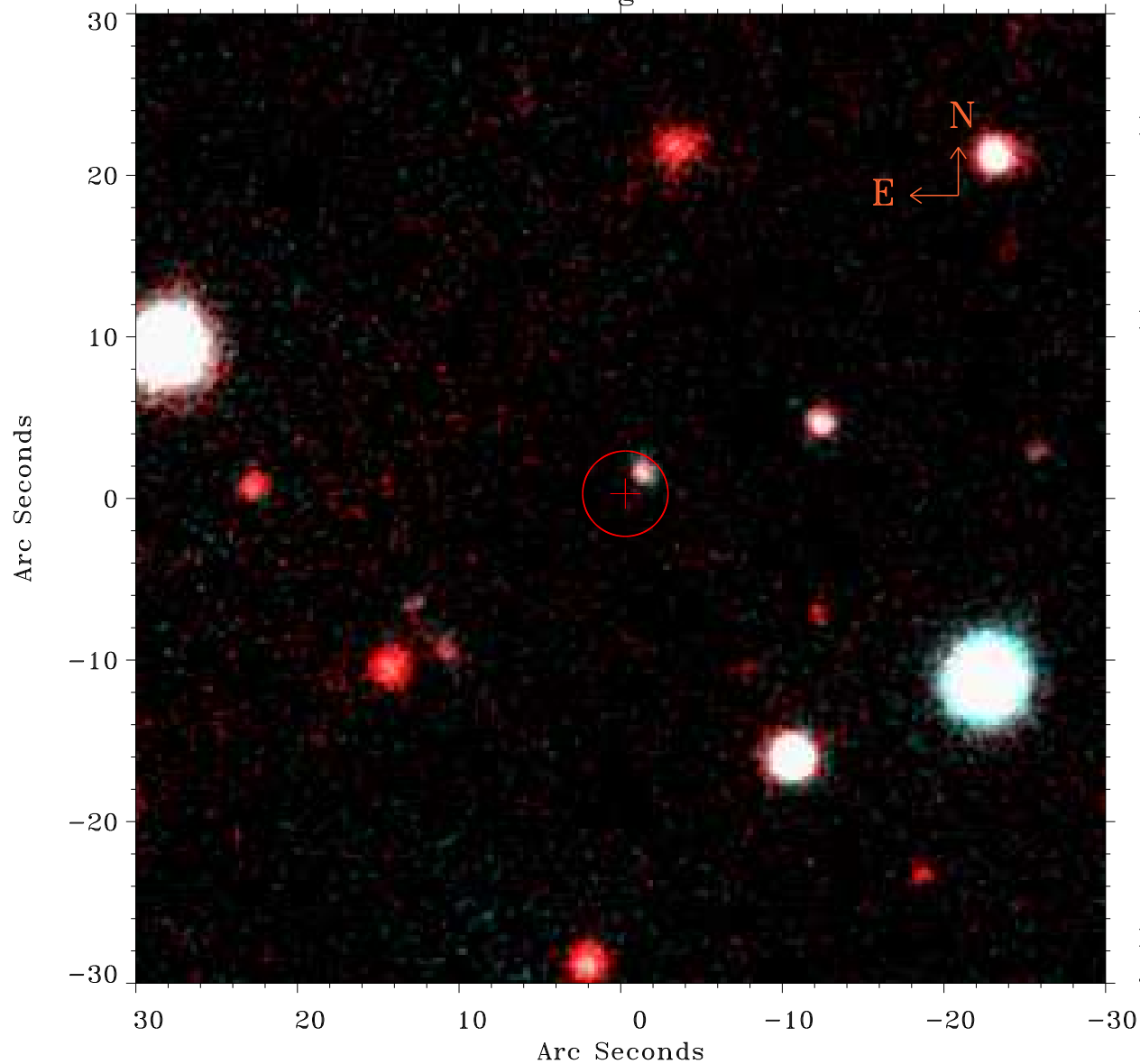


# EPIC source finding chart ACDS V10.0



Principal Investigator :

Dr Michael Koss

XMM target name :

ES0438-9

OBS ID : 903040401

Source number : 3

X-ray coordinates :

$\alpha$  : 11 10 47.12

$\delta$  : -28 41 21.0

Center coordinates :

$\alpha$  : 11 10 47.12

$\delta$  : -28 41 21.1

Plate reference :

Origin : PanSTARRS-DR1

Color coding :

z band ●

(z+g)/2 ●

g band ●

Error:

R90 : 2.6 arcsec

XMM SSC

Jun 13 21:25:47 2022