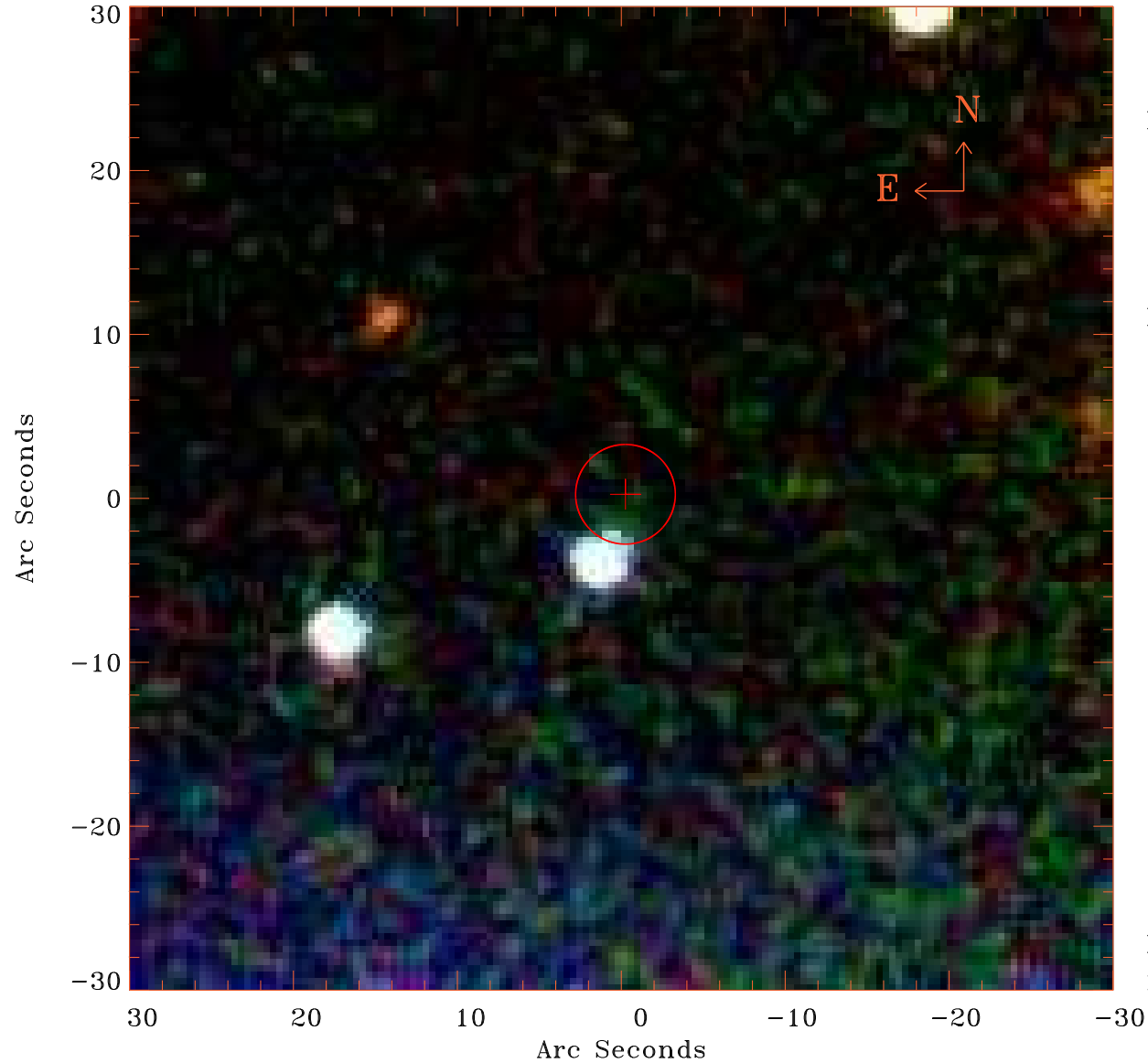


EPIC source finding chart V10.0



Principal Investigator :

Dr Francesca Civano

XMM target name :

NEP DTF

OBS ID : 913590101

Source number : 6

X-ray coordinates :

α : 17 21 02.37

δ : +65 40 50.0

Center coordinates :

α : 17 21 02.34

δ : +65 40 50.1

Plate reference :

Origin : SDSS

Color coding :

i band ●

r band ●

g band ●

Error circle :

R_{90} (") : 3.0

XMM SSC

Dec 12 13:39:17 2022