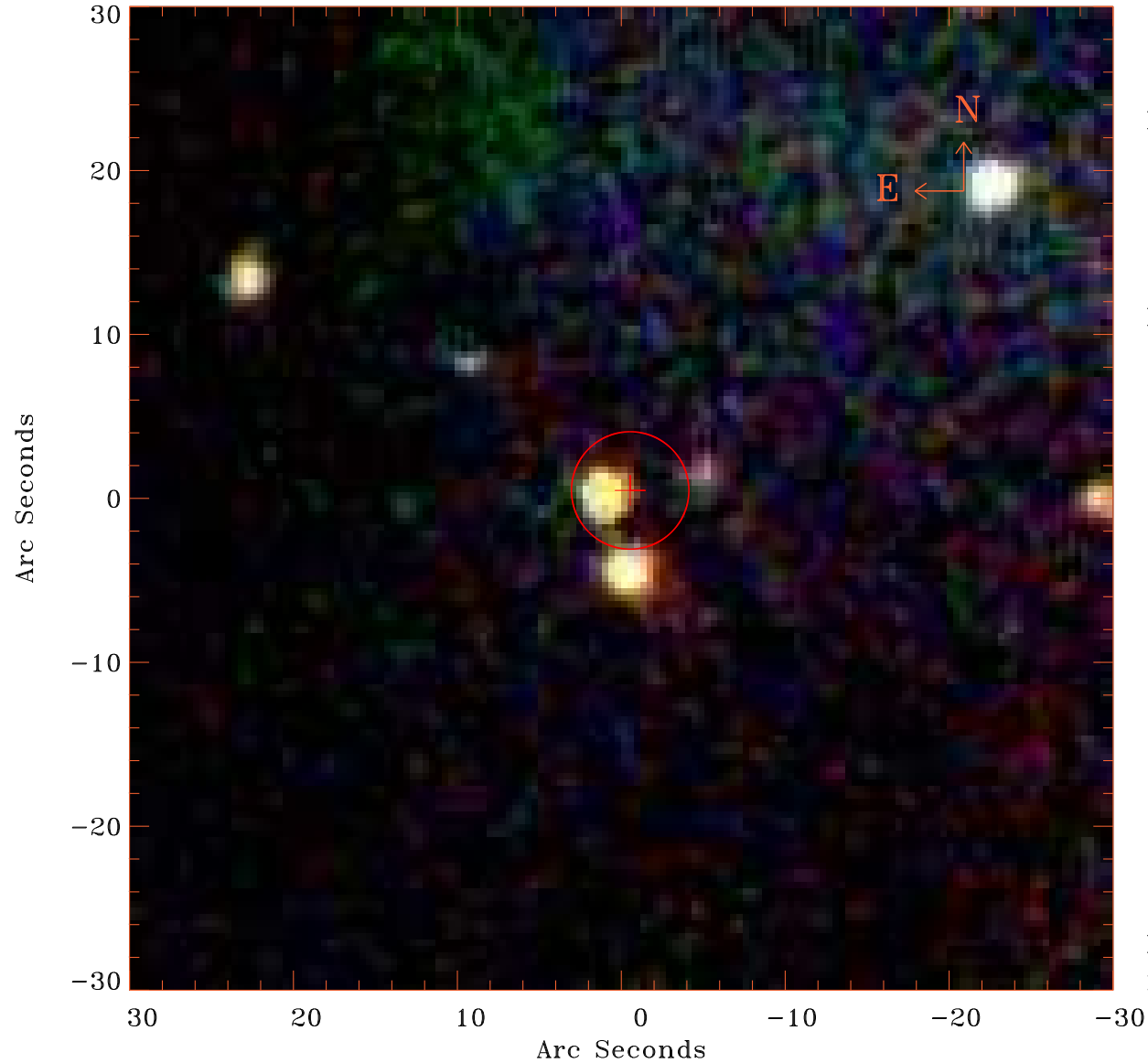


# EPIC source finding chart V10.0



Principal Investigator :

Dr Francesca Civano

XMM target name :

NEP DTF

OBS ID : 913590101

Source number : 13

X-ray coordinates :

$\alpha$  : 17 24 55.11

$\delta$  : +65 43 21.6

Center coordinates :

$\alpha$  : 17 24 55.13

$\delta$  : +65 43 21.6

Plate reference :

Origin : SDSS

Color coding :

i band ●

r band ●

g band ●

Error circle :

$R_{90}$  (") : 3.6

XMM SSC

Dec 12 13:39:22 2022