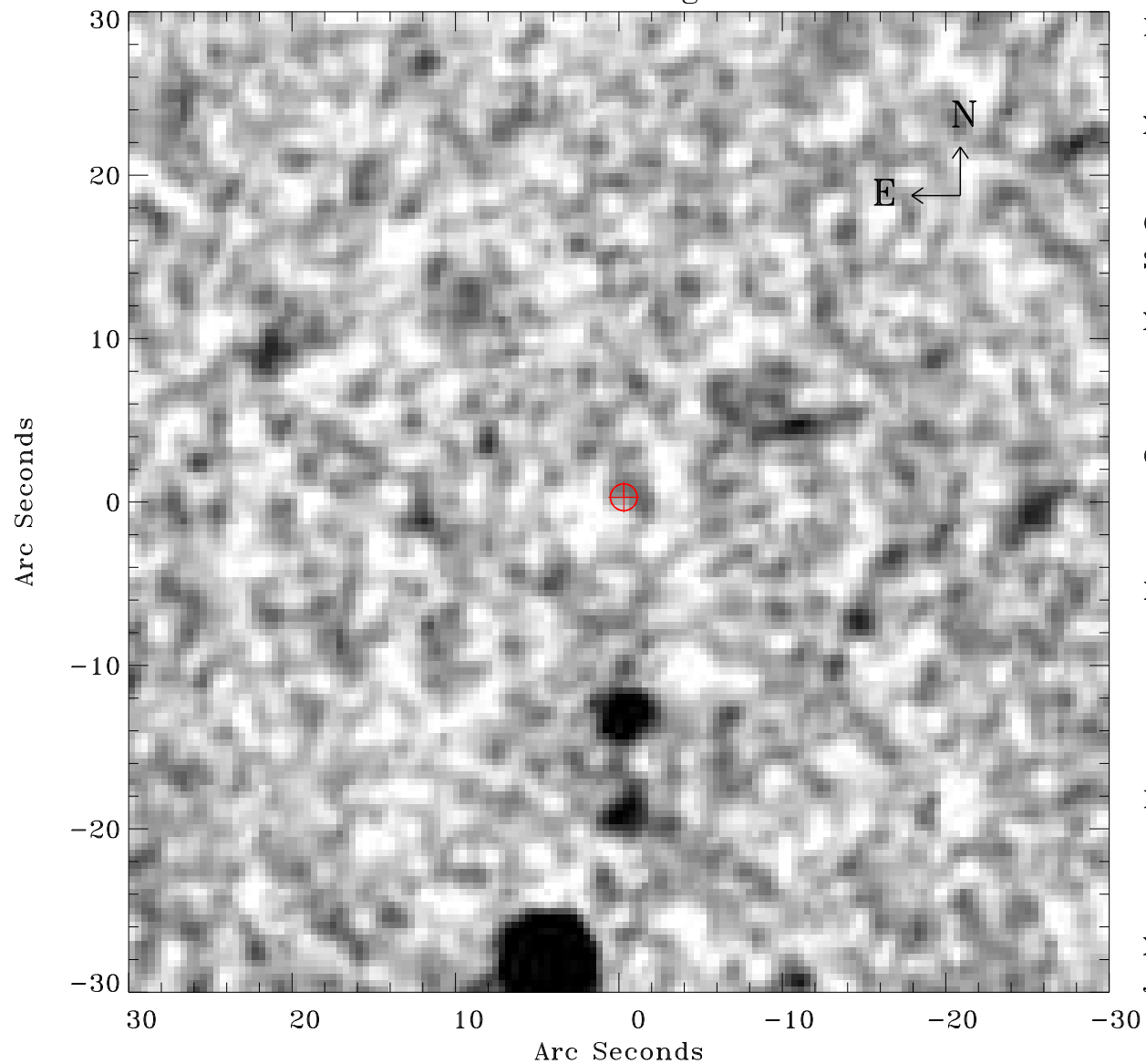


# EPIC source finding chart V10



Principal Investigator :

Dr NORBERT SCHARTEL (PS)

XMM target name :

ASASSN-14ko

OBS ID : 932391201

Source number : 6

X-ray coordinates :

$\alpha$  : 05 24 25.33

$\delta$  : -46 05 28.8

Center coordinates :

$\alpha$  : 05 24 25.32

$\delta$  : -46 05 28.7

Plate reference :

Origin : CDS HIPs Network

Plate : MAMA srcj

Pixel : 0.40 "/pix

Error circle :

$R_{90}$  (") : 0.8

XMM SSC

Jan 12 11:50:54 2024