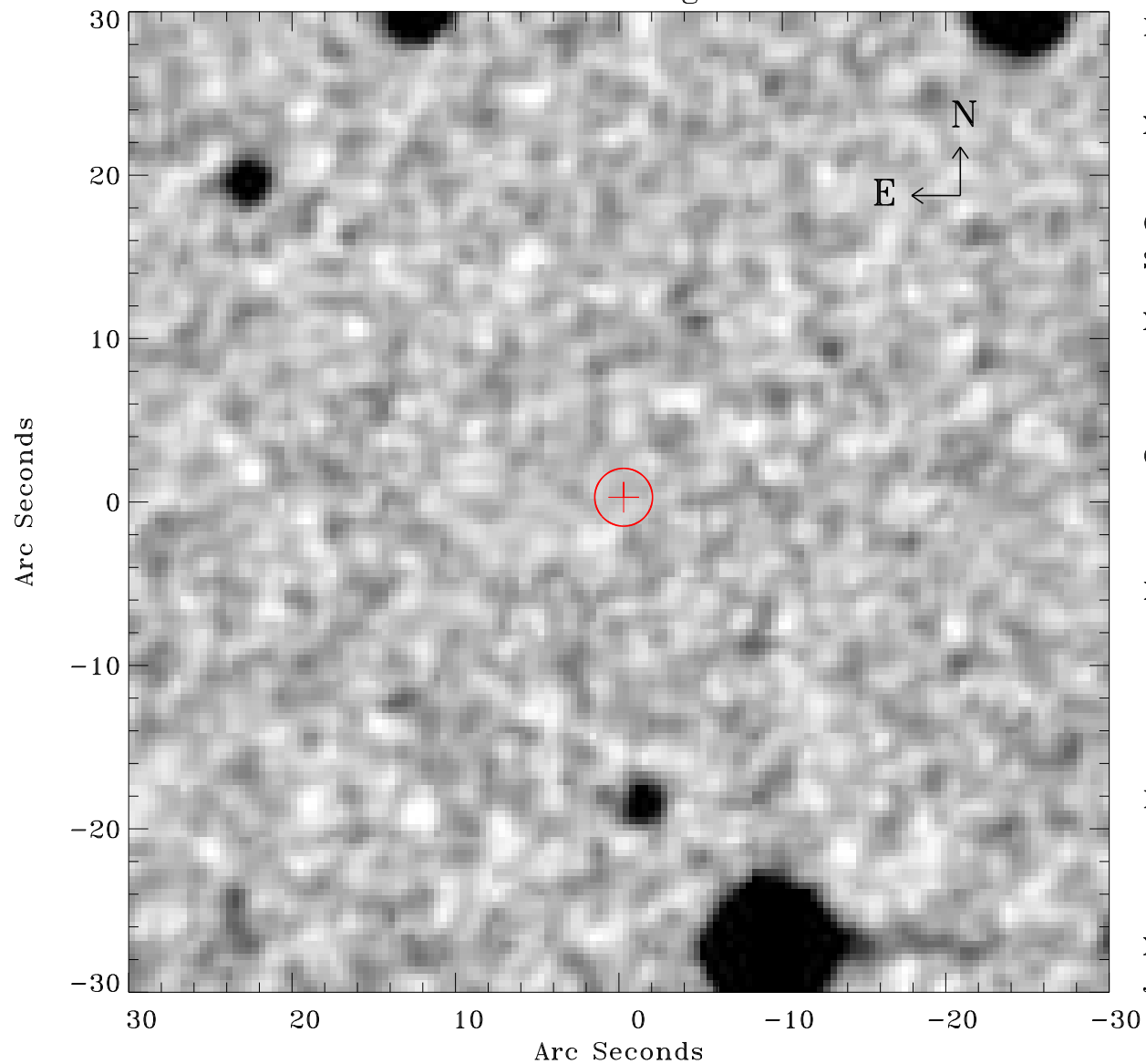


# EPIC source finding chart V10



Principal Investigator :  
Dr NORBERT SCHARTEL (PS)

XMM target name :  
ASASSN-14ko

OBS ID : 932391201  
Source number : 61

X-ray coordinates :  
 $\alpha$  : 05 25 32.58  
 $\delta$  : -46 07 01.9

Center coordinates :  
 $\alpha$  : 05 25 32.57  
 $\delta$  : -46 07 01.8

Plate reference :  
Origin : CDS HIPs Network  
Plate : MAMA srcj  
Pixel : 0.40 "/pix

Error circle :  
 $R_{90}$  (") : 1.8

XMM SSC  
Jan 12 11:52:29 2024