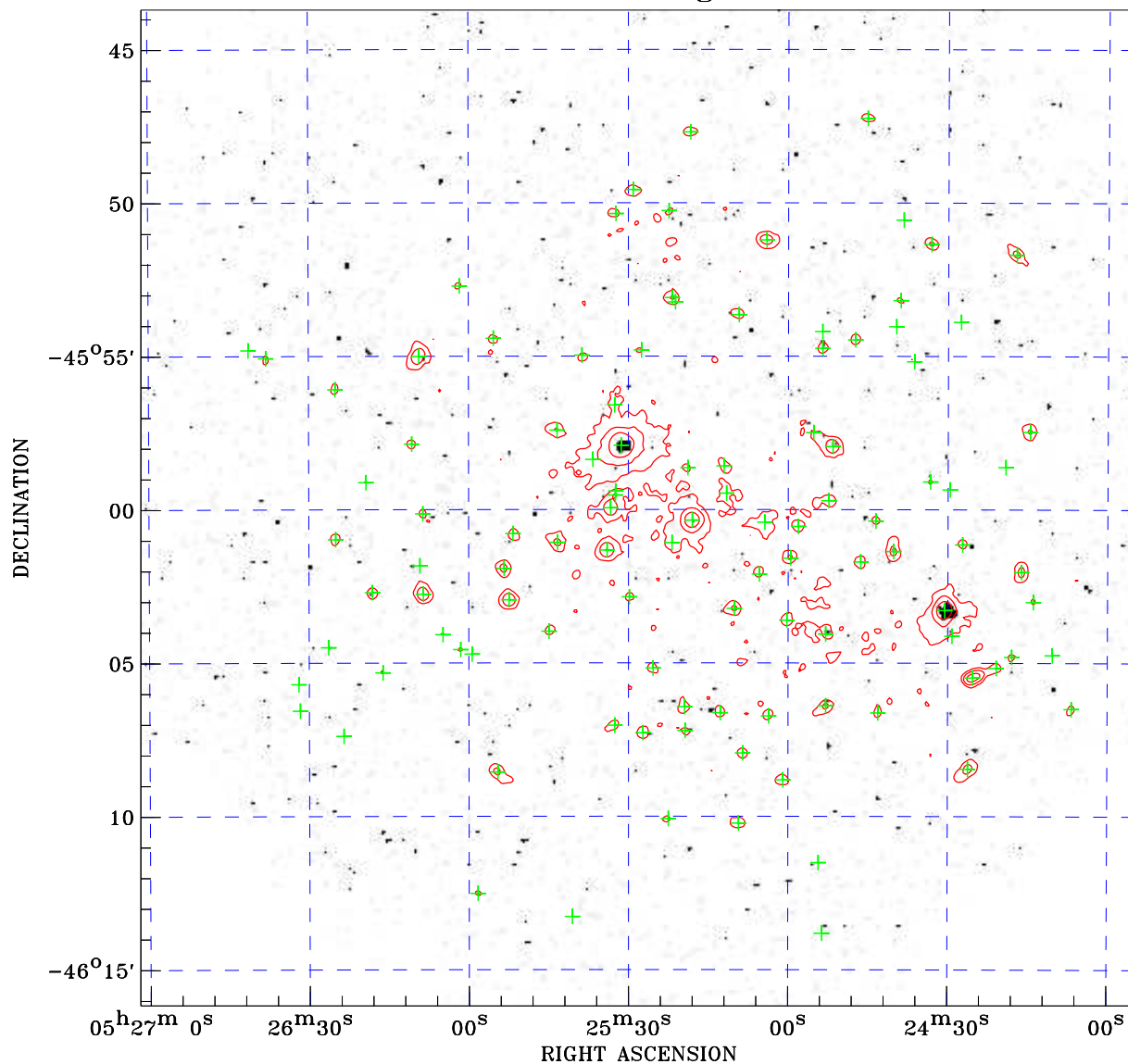



# PDF XMM ROSAT image ACDS V10.0



ROSAT image gray scale (Log) :  
  
 $\langle 2.978\text{E}-04$   $\rangle 2.978\text{E}-04$   
(counts s<sup>-1</sup>)

⊙ Epic image contour  
levels at 2, 7 and 30 $\sigma$   
+ Detected Epic sources

Principal Investigator :  
Dr NORBERT SCHARTEL (PS)

XMM target name :  
ASASSN-14ko

Observation ID :  
0932391201

Epic image :  
 $\alpha$  : 05 25 28.04  
 $\delta$  : -45 59 57.2  
Energy band : 0.2-12.0 keV  
MOS1 : 39194 s  
MOS2 : 40851 s  
PN : 33357 s

Contour levels (counts) :  
2 $\sigma$  :3.559E+00 7 $\sigma$  :8.227E+00  
30 $\sigma$  2.970E+01

Nearest ROSAT image  
from Epic image center :  
Observation : 701846h  
Instrument : HRI  
 $\alpha$  : 05 25 40.39  
 $\delta$  : -45 59 48.2

Other ROSAT images :  
None

XMM SSC  
Jan 12 11:50:34 2024