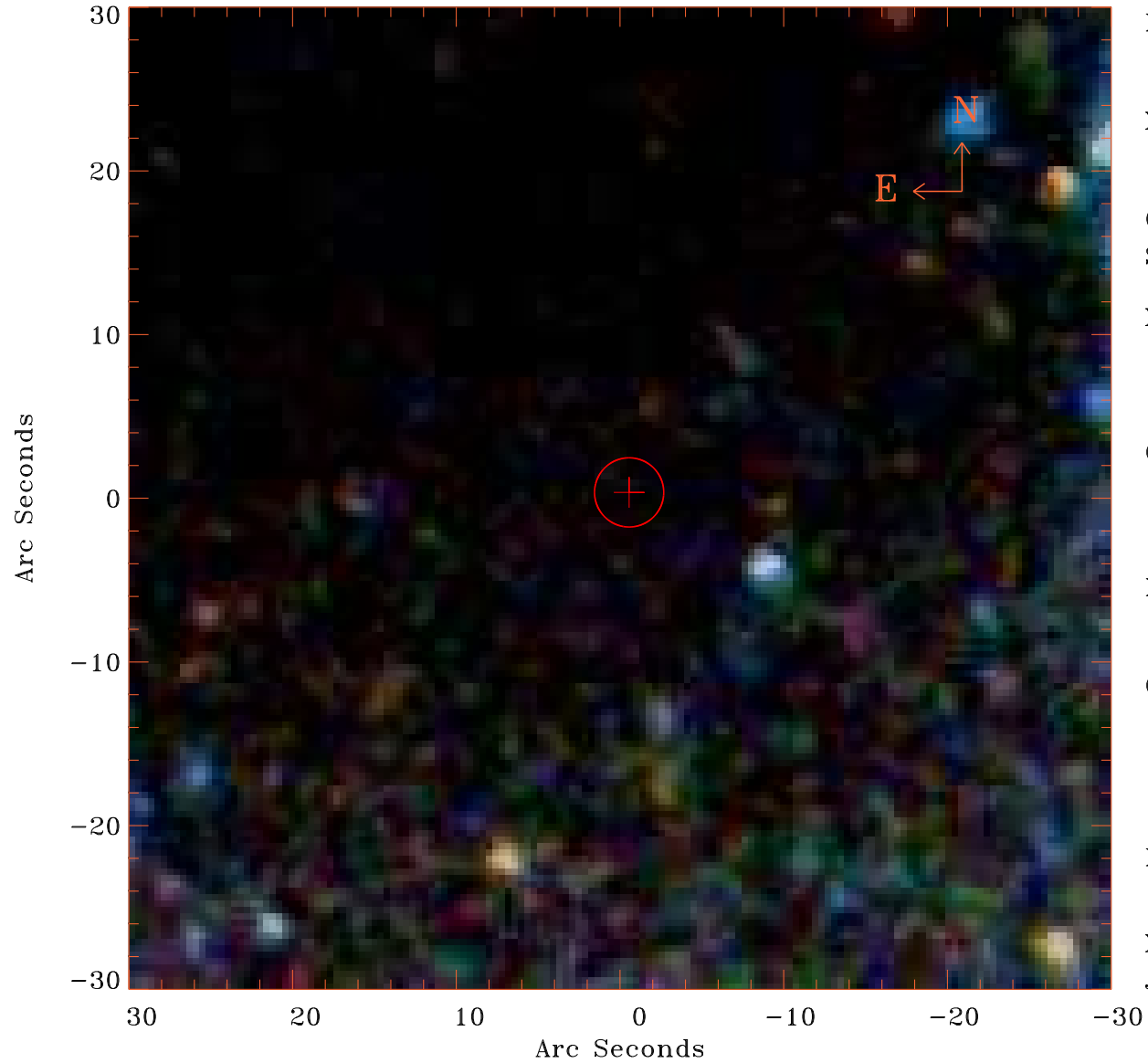


EPIC source finding chart V10.0



Principal Investigator :
Dr NORBERT SCHARTEL (PS)

XMM target name :
NGC 4395

OBS ID : 932391801
Source number : 10

X-ray coordinates :
 α : 12 25 47.39
 δ : +33 34 48.1

Center coordinates :
 α : 12 25 47.40
 δ : +33 34 48.1

Plate reference :
Origin : SDSS

Color coding :
i band ●
r band ●
g band ●

Error circle :
 R_{90} (") : 2.1

XMM SSC
Jun 13 12:18:05 2024