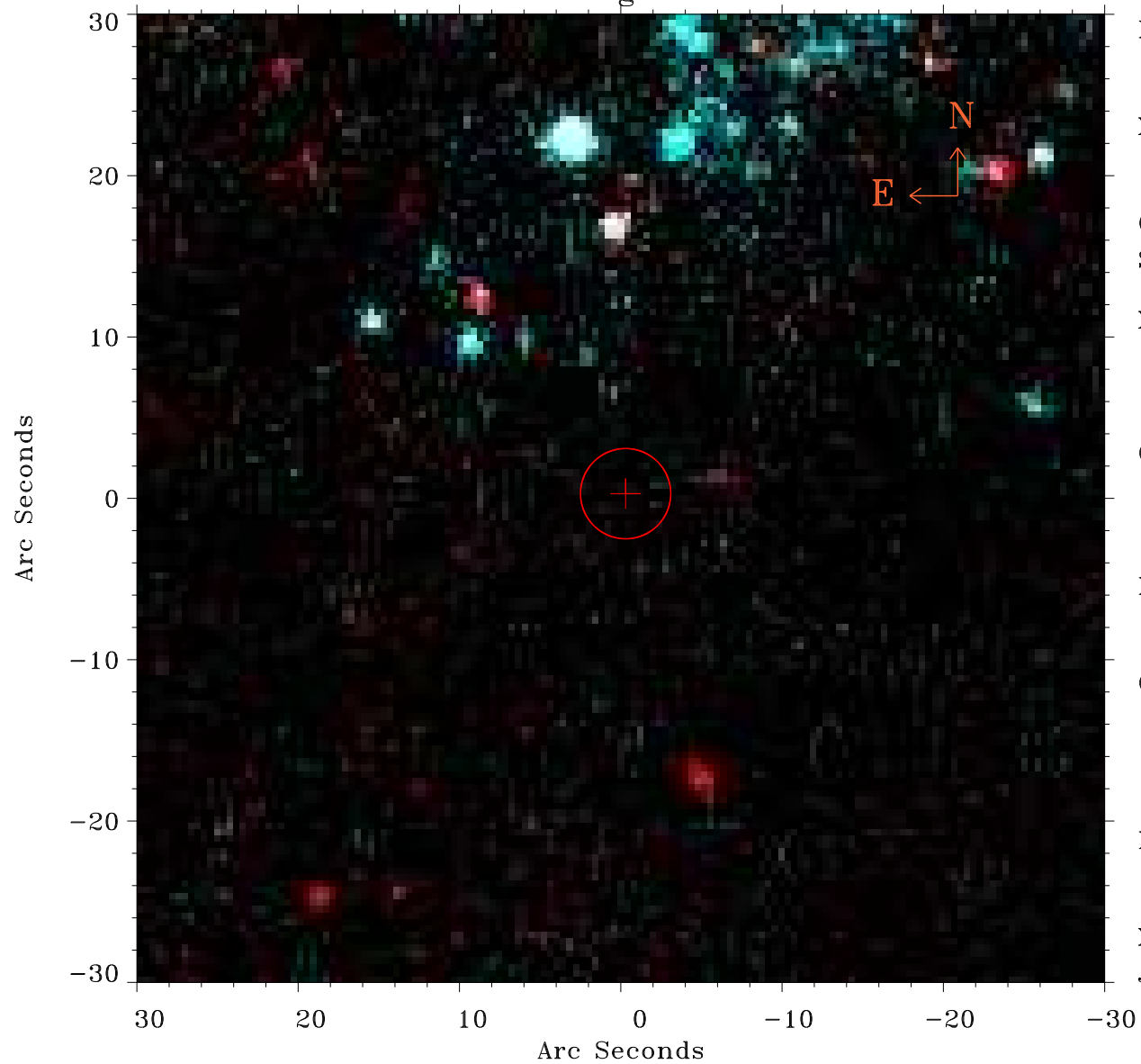


EPIC source finding chart ACDS V10.0



Principal Investigator :
Dr NORBERT SCHARTEL (PS)

XMM target name :
NGC 4395

OBS ID : 932391801
Source number : 17

X-ray coordinates :
 α : 12 25 43.77
 δ : +33 30 04.1

Center coordinates :
 α : 12 25 43.76
 δ : +33 30 04.3

Plate reference :
Origin : PanSTARRS-DR1

Color coding :
z band ●
(z+g)/2 ●
g band ●

Error:
R90 : 2.8 arcsec

XMM SSC
Jun 13 12:18:41 2024